

# Coaxial Low Pass Filter

DC to 950 MHz (40 dB Isolation up to 20 GHz)

**NEW!**  
VLFX-950

## Maximum Ratings

Operating Temperature	-55°C to 100°C
Storage Temperature	-55°C to 100°C
RF Power Input*	10W max. at 25°C

\*Passband rating, derate linearly to 3.5W at 100°C ambient.

## Features

- very good isolation, 40 dB up to 20 GHz
- 21 sections
- temperature stable LTCC internal structure
- patent pending
- re-entry frequency > 20 GHz
- rugged stainless steel unibody

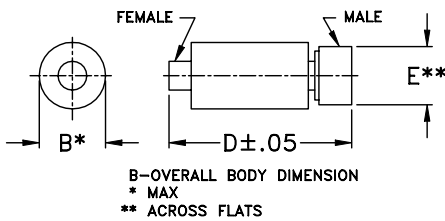


CASE STYLE: FF1118  
PRICE: \$ 39.95 ea. QTY (1-9)

## Applications

- harmonic rejection
- transmitters/receivers
- lab use
- test instrumentation

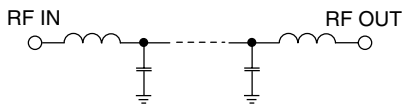
## Outline Drawing



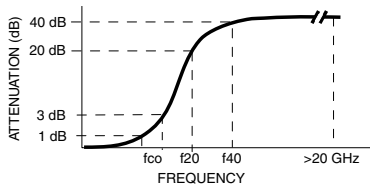
## Outline Dimensions (inch/mm)

B	D	E	wt.
.39	2.67	.312	grams
9.91	67.82	7.92	17.0

## Functional Schematic



## Typical Frequency Response



## Low Pass Filter Electrical Specifications @ 25°C

MODEL NO.	PASSBAND (MHz) (Loss < 1.2dB) Max.	fco, MHz Nom (Loss 3 dB) Typ	STOPBAND (MHz) (Loss, dB)		VSWR (:1)		NO. OF SECTIONS
			f20 Min.	f40 Typ.	Stopband Typ.	Passband Typ.	
VLFX-950	DC-950	1400	1750	2250-20000	10	1.3	21

## Typical Performance Data @ 25°C

Frequency (MHz)	Insertion Loss (dB)	VSWR (:1)
50	0.27	1.03
300	0.42	1.17
600	0.60	1.11
950	1.02	1.34
1100	1.21	1.34
1275	1.67	1.23
1450	3.42	2.43
1550	5.78	3.72
1650	12.61	7.15
1725	21.51	9.72
2000	35.30	15.44
4000	82.32	58.20
6000	79.95	39.93
8000	76.22	51.88
10000	81.90	49.29
12000	63.46	10.03
14000	58.41	4.32
16000	76.13	14.24
18000	63.01	13.40
20000	53.82	18.85

