

Coaxial Low Pass Filter

DC to 650 MHz (40 dB Isolation up to 20 GHz)

NEW!
VLFX-650

Maximum Ratings

Operating Temperature -55°C to 100°C

Storage Temperature -55°C to 100°C

RF Power Input* 10W max. at 25°C

*Passband rating, derate linearly to 3.5W at 100°C ambient.

Features

- very good isolation, 40 dB up to 20 GHz
- 21 sections
- temperature stable LTCC internal structure
- patent pending
- re-entry frequency > 20 GHz
- rugged stainless steel unibody

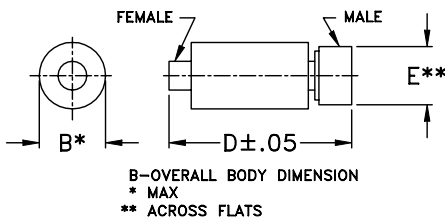


CASE STYLE: FF1118
PRICE: \$ 39.95 ea. QTY (1-9)

Applications

- harmonic rejection
- transmitters/receivers
- lab use
- test instrumentation

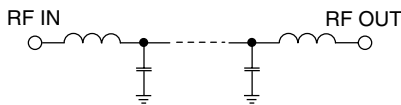
Outline Drawing



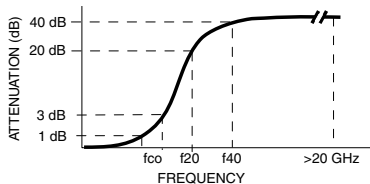
Outline Dimensions (inch/mm)

B	D	E	wt.
.39	2.67	.312	grams
9.91	67.82	7.92	17.0

Functional Schematic



Typical Frequency Response



Low Pass Filter Electrical Specifications @ 25°C

MODEL NO.	PASSBAND (MHz) (Loss < 1.2dB) Max.	fco, MHz Nom (Loss 3 dB) Typ	STOPBAND (MHz) (Loss, dB)		VSWR (:1)		NO. OF SECTIONS
			f20 Min.	f40 Typ.	Stopband Typ.	Passband Typ.	
VLFX-650	DC-650	1025	1250	1450-20000	10	1.2	21

Typical Performance Data @ 25°C

Frequency (MHz)	Insertion Loss (dB)	VSWR (:1)
50	0.29	1.08
200	0.39	1.13
400	0.54	1.11
650	0.89	1.20
800	1.22	1.27
900	1.57	1.20
1050	3.45	1.45
1125	9.11	2.42
1200	21.00	3.86
1425	39.87	14.61
1575	53.44	24.07
2000	51.81	41.80
3000	82.03	89.22
5000	82.92	52.93
7500	75.09	48.67
10000	99.20	7.09
12500	60.25	14.19
15000	69.31	6.64
17500	61.54	19.28
20000	60.47	11.14

