

# Coaxial Low Pass Filter

DC to 225 MHz (40 dB Isolation up to 20 GHz)

**NEW!**  
VLFX-225

## Maximum Ratings

Operating Temperature -55°C to 100°C

Storage Temperature -55°C to 100°C

RF Power Input\* 10W max. at 25°C

\*Passband rating, derate linearly to 3.5W at 100°C ambient.

## Features

- very good isolation, 40 dB up to 20 GHz
- 21 sections
- temperature stable LTCC internal structure
- patent pending
- re-entry frequency > 20 GHz
- rugged stainless steel unibody

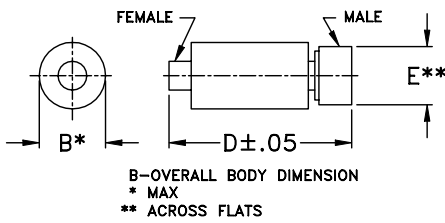


CASE STYLE: FF1118  
PRICE: \$ 39.95 ea. QTY (1-9)

## Applications

- harmonic rejection
- transmitters/receivers
- lab use
- test instrumentation

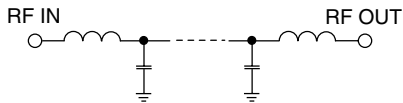
## Outline Drawing



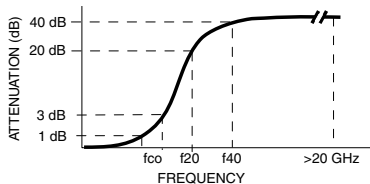
## Outline Dimensions (inch/mm)

B	D	E	wt.
.39	2.67	.312	grams
9.91	67.82	7.92	17.0

## Functional Schematic



## Typical Frequency Response



## Low Pass Filter Electrical Specifications @ 25°C

MODEL NO.	PASSBAND (MHz) (Loss < 1.2dB) Max.	fco, MHz Nom (Loss 3 dB) Typ	STOPBAND (MHz) (Loss, dB)		VSWR (:1)		NO. OF SECTIONS
			f20 Min.	f40 Typ.	Stopband Typ.	Passband Typ.	
VLFX-225	DC-225	345	460	520-20000	10	1.15	21

## Typical Performance Data @ 25°C

Frequency (MHz)	Insertion Loss (dB)	VSWR (:1)
50	0.18	1.08
100	0.52	1.10
160	0.61	1.11
225	0.92	1.10
260	1.16	1.13
300	1.52	1.28
360	3.50	1.62
400	6.96	1.78
440	23.09	3.47
520	41.12	8.40
600	41.60	11.87
750	49.81	18.37
1000	49.72	33.93
2500	78.92	98.08
5000	68.41	49.08
7500	65.61	36.38
10000	59.00	17.35
12500	74.50	12.80
15000	57.27	5.82
20000	58.14	4.44

