

# T1/CEPT/ISDN-PRI TRANSFORMERS

## FEATURES

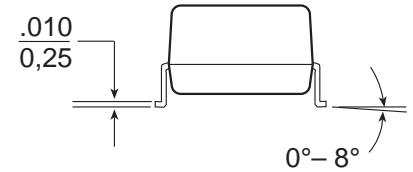
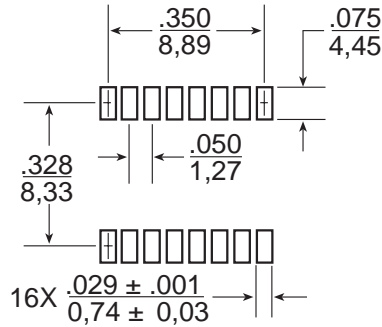
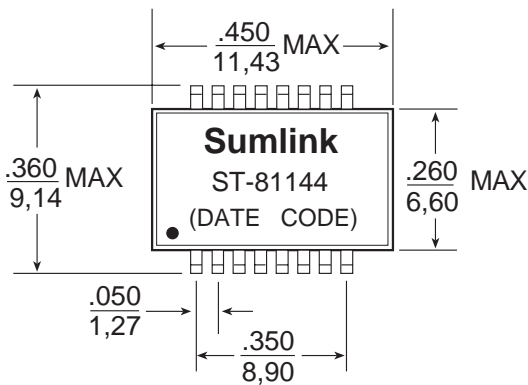
- Small surface mount package
- Dual SMT package contains both transmit and receive transformers
- Models matched to leading transceiver ICs
- Isolation Voltage:1500 Vrms



Electrical Specifications @ 25°C — Operating Temperature -40°C to +85°C

Part Number	Turns Ratio (Pri : Sec ±5%)	OCL (mH MIN)	C <sub>WW</sub> (pF MAX)	LL (μH MAX)	DCR Pri (Ω MAX)	Primary Pins
ST-81144	1CT:1CT & 1CT:2.4CT	1.00 & 1.00	30 & 30	0.80 & 0.80	0.85 & 0.85	9-11, 1-3

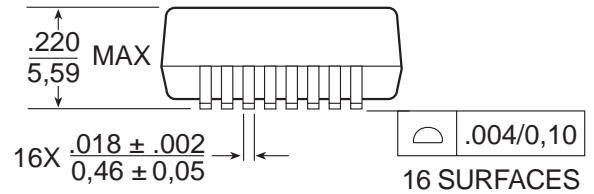
## Mechanical



SUGGESTED PAD LAYOUT

Dimensions:  $\frac{\text{Inches}}{\text{mm}}$

Unless otherwise specified, all tolerances are  $\pm \frac{.010}{0,25}$



## Schematics

