





**Solid State Devices, Inc.**

14701 Firestone Blvd \* La Mirada, CA 90638

Phone: (562) 404-4474 \* Fax: (562) 404-1773

ssdi@ssdi-power.com \* www.ssdi-power.com

**SDR620J, M & Z**

**Thru**

**SDR622J, M & Z**

| Electrical Characteristics (per leg) <sup>4/</sup>  |  | Symbol          | Max  | Units           |
|---|--|-----------------|------|-----------------|
| <b>Instantaneous Forward Voltage Drop</b>   | 300µsec Pulse, I <sub>F</sub> = 10A, T <sub>A</sub> = 25 °C  | V <sub>F1</sub> | 1.00 | V <sub>DC</sub> |
|   | 300µsec Pulse, I <sub>F</sub> = 20A, T <sub>A</sub> = 25 °C  | V <sub>F2</sub> | 1.20 |                 |
|   | 300µsec Pulse, I <sub>F</sub> = 10A, T <sub>A</sub> = 100 °C | V <sub>F3</sub> | 0.90 |                 |
|   | 300µsec Pulse, I <sub>F</sub> = 10A, T <sub>A</sub> = -55 °C | V <sub>F4</sub> | 1.15 |                 |
| <b>Reverse Leakage Current</b><br>(Rated V <sub>R</sub> , 300µsec Pulse Minimum)                            | T <sub>A</sub> = 25 °C                                       | I <sub>R1</sub> | 10   | µA              |
|   | T <sub>A</sub> = 100 °C                                      | I <sub>R2</sub> | 100  | µA              |
| <b>Reverse Recovery Time</b><br>(I <sub>F</sub> = 500 mA, I <sub>R</sub> = 1 Amp, I <sub>RR</sub> = 250 mA) |  | t <sub>RR</sub> | 35   | nsec            |
| <b>Junction Capacitance</b><br>(V <sub>R</sub> = 10V <sub>DC</sub> , T <sub>A</sub> = 25°C, f = 1MHz)       |  | C <sub>J</sub>  | 250  | pF              |

**Notes:**

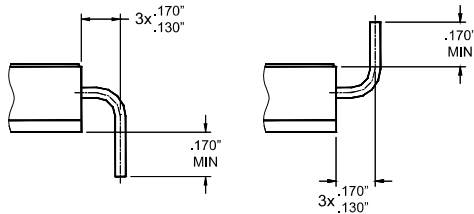
1/ For ordering information, Price, Operating Curves, and Availability- Contact Factory.

2/ Screened to MIL-PRF-19500.

3/ Recovery Conditions: I<sub>F</sub> = 500 mA, I<sub>R</sub> = 1 Amp, I<sub>RR</sub> = 250 mA.

4/ Unless Otherwise Specified, All Maximum Ratings/Electrical Characteristics @25°C.

**Figure 1- Optional Lead Bends**

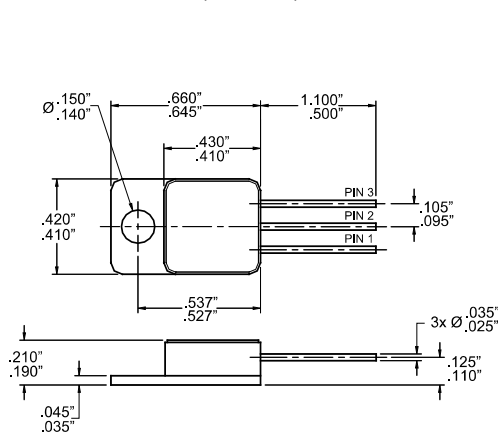


Suffix JDB, MDB & ZDB      Suffix JUB, MUB & ZUB

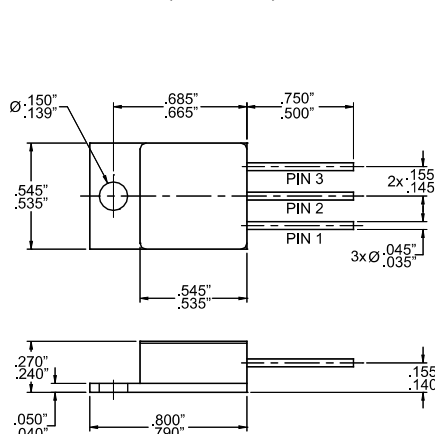
**Table 1- PIN ASSIGNMENT**

| Code | Configuration | Pin 1   | Pin 2   | Pin 3 |
|------|---------------|---------|---------|-------|
| —    | Normal        | Cathode | Anode   | Anode |
| R    | Reverse       | Cathode | Cathode | Anode |

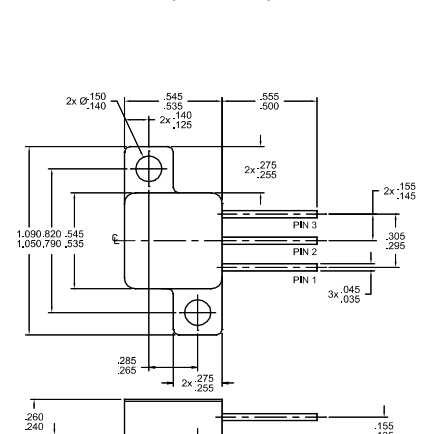
**TO-257 (Suffix J) Outline:**



**TO-254 (Suffix M) Outline:**



**TO-254Z (Suffix Z) Outline:**



**NOTE:** All specifications are subject to change without notification. SCD's for these devices should be reviewed by SSDI prior to release.

**DATA SHEET #: RC0031C**

**DOC**