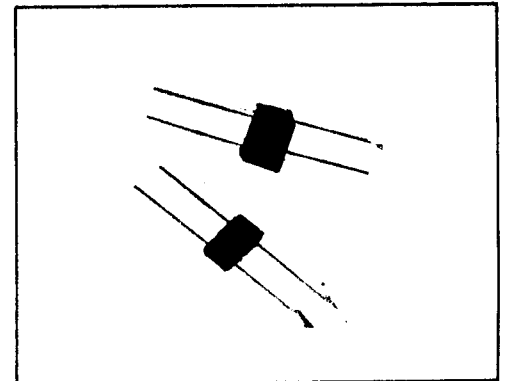


SDA 276-F

X00175

1 amp fast recovery bridge rectifiers

- * Average Output Current 1 Amp
- * PIV 50 to 1000 Volts
- * Fast Recovery, 150 nsec. Max.
- * Operating and Storage Temperature -55°C to $+150^{\circ}\text{C}$
- * Subminiature design for packaging versatility.



SSDI introduces a new and complete series of Fast Recovery, Single Phase Bridge Rectifier Assemblies. These units are designed in special packages to provide maximum thermal conductivity and simple installation.

Semtech Equivalent: SBR05F through SBR10F
 Unitrode Equivalent: 676-1 through 676-6
 Consult your factory representative for engineering assistance.

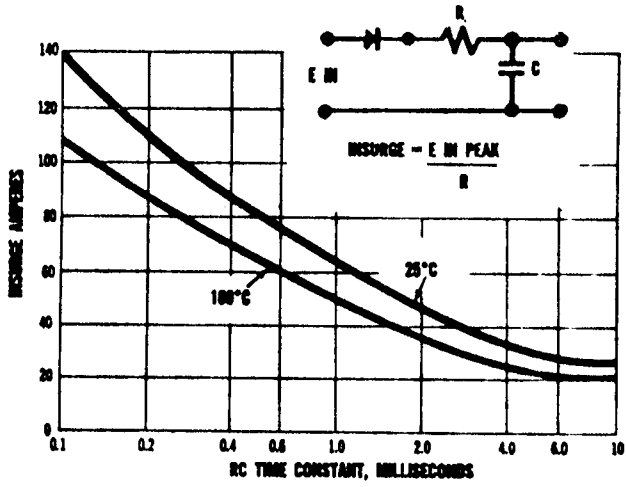
Type	PIV per leg	Sine Wave RMS input Voltage Max.	Average DC Output Amps TC = (case temp.)		Reverse * Recovery Time T_{rr}	Peak 1 Cycle Forward Surge	VF Max per leg @ ADC @ 1A	Reverse Current (I_R Max. per leg. @ PIV)	
			55°C	100°C				25°C	100°C
	VOLTS	VOLTS	AMPS	AMPS	ns	AMPS	VOLTS	UA	UA
SDA276AF	50	35	1.0	.65	150	6	1.3	2	40
SDA276BF	100	70	1.0	.65	150	6	1.3	2	40
SDA276CF	200	140	1.0	.65	150	6	1.3	2	40
SDA276DF	400	280	1.0	.65	150	6	1.3	2	40
SDA276EF	600	420	1.0	.65	150	6	1.3	2	40
SDA276FF	800	560	1.0	.65	150	6	1.3	2	40
SDA276GF	1000	700	1.0	.65	150	6	1.3	2	40

* t_{rr} conditions: .05 Amp forward to 1.0 Amp reverse, Recover, 25 Amps
 SSDI reserves the right to change specifications without notice.

SSDI SOLID STATE DEVICES, INC.

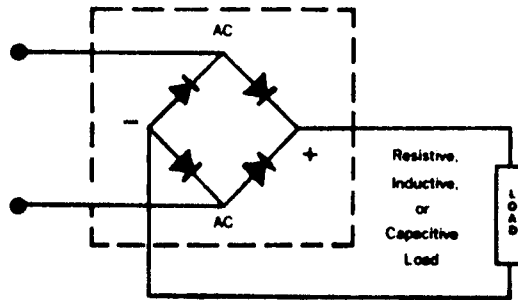
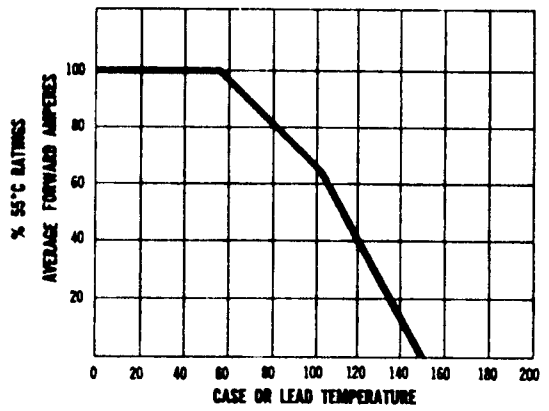
P. O. Box 577, La Mirada, California, 90637-0577 TWX 910-583-4807
 14830 Valley View, La Mirada, California, 90638 (213) 921-9660 ..

MAXIMUM RATINGS FOR CAPACITY LOADS

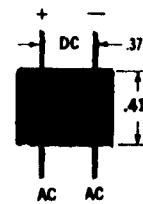
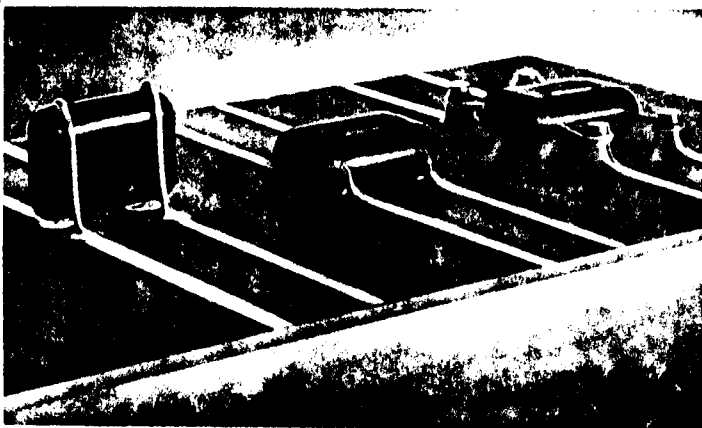


FOR FAST RECOVERY BRIDGES + 2

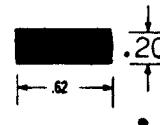
ALL BRIDGES
TEMPERATURE DERATING CURVE



Typical Bridge Circuit



Lead Spacing Measured
Center to Center



Tolerance $\pm .030$