

Ultra-Small Ceramic Power Splitter/Combiner

SCN-3-28+ SCN-3-28

3 Way-0° 50Ω

1600 to 2800 MHz



CASE STYLE: FV1206-1
PRICE: \$3.95 ea. QTY (10-49)
\$3.25 ea. QTY (100)

Maximum Ratings

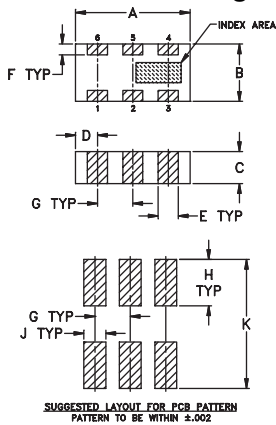
Operating Temperature	-55°C to 100°C
Storage Temperature	-55°C to 100°C
Power Input (as a splitter)	15W* max.

*derate linearly to 6W at 100°C ambient.

Pin Connections

SUM PORT	2
PORT 1	6
PORT 2	5
PORT 3	4
GROUND	1,3
PORT 1-2, 2-3	resistor external 124 OHMS
PORT 1-3	resistor external 127 OHMS

Outline Drawing

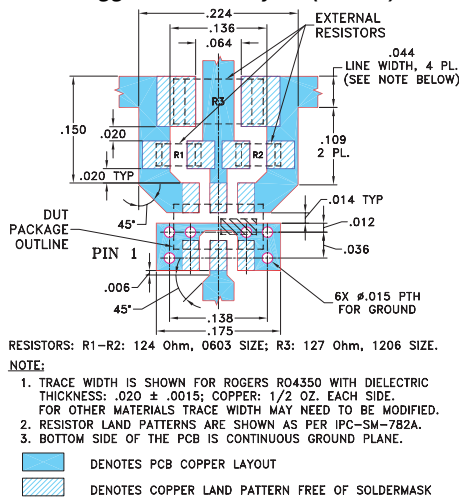


Outline Dimensions (inch)

A	B	C	D	E	F
.126	.063	.037	.024	.022	.012
3.20	1.60	0.94	0.61	0.56	0.30

G	H	J	K	wt
.039	.042	.024	.123	grams
0.99	1.07	0.61	3.12	.020

Demo Board MCL P/N: TB-303 Suggested PCB Layout (PL-171)



Features

- isolation resistors, external
- low insertion loss, 0.8 dB typ.
- excellent amplitude unbalance, 0.2 dB typ.
- very good phase unbalance, 5 deg. typ.
- high isolation, 12 dB typ.
- excellent power handling, 15W as splitter
- small size, 0.12"X0.06"X0.035"
- ESD non-sensitive
- temperature stable LTCC technology
- wrap around, terminations for excellent solderability
- low cost
- patent pending

Applications

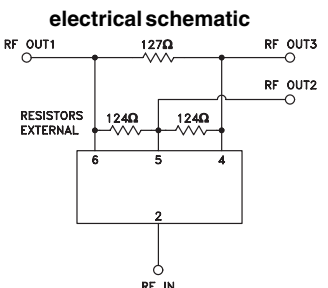
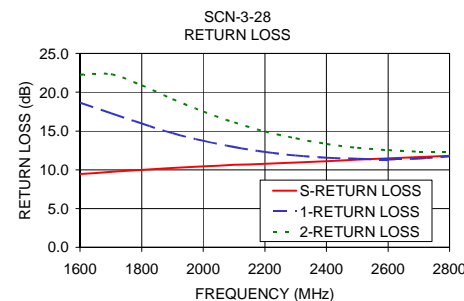
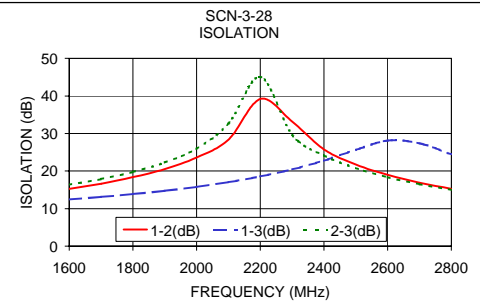
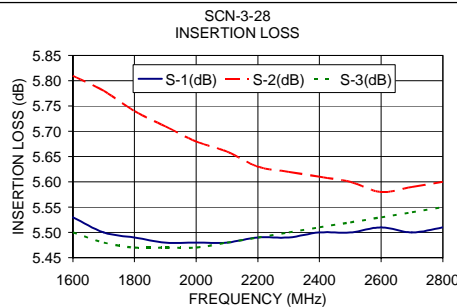
- PCS, DECT
- DSS
- WLAN
- satellite communication
- line of sight communication
- ISM applications
- WLL
- defense applications

Splitter Electrical Specifications

MODEL NO.	FREQUENCY (MHz)	INSERTION LOSS (dB) ABOVE 4.8 dB		ISOLATION (dB)	PHASE UNBALANCE (Degrees)	AMPLITUDE UNBALANCE (dB)		RETURN LOSS (dB)	
		Typ.	Max.			Typ.	Max.	INPUT Typ.	OUTPUT Typ.
SCN-3-28(+)	1600-2800	0.8	1.2	12	10	5	8	10	12
	1800-2000	0.8	1.2	14	12	5	8	10	13
	2000-2200	0.8	1.2	16	13	5	8	11	12
	2400-2500	0.8	1.2	20	17	5	8	11	12

Typical Performance Data

Freq. (MHz)	Insertion Loss (dB)			Amp. Unbal. (dB)	Isolation (dB)			Phase Unbal. (deg.)	Return Loss (dB)		
	S-1	S-2	S-3		1-2	1-3	2-3		S	1	2
1600.00	5.53	5.81	5.50	0.31	15.27	12.43	16.36	3.29	9.44	18.66	22.27
1700.00	5.50	5.78	5.48	0.29	16.66	13.09	17.87	3.64	9.73	17.30	22.33
1800.00	5.49	5.74	5.47	0.27	18.38	13.86	19.78	3.99	9.99	15.95	20.89
1900.00	5.48	5.71	5.47	0.24	20.57	14.75	22.29	4.31	10.23	14.71	19.12
2000.00	5.48	5.68	5.47	0.21	23.60	15.80	25.98	4.62	10.44	13.73	17.52
2100.00	5.48	5.66	5.48	0.18	28.40	17.05	32.67	4.79	10.63	12.94	16.11
2200.00	5.49	5.63	5.49	0.15	39.20	18.57	45.10	4.99	10.78	12.30	14.93
2300.00	5.49	5.62	5.50	0.12	33.16	20.43	29.60	5.06	10.95	11.85	14.05
2400.00	5.50	5.61	5.51	0.11	25.77	22.80	24.16	5.14	11.12	11.56	13.33
2500.00	5.50	5.60	5.52	0.09	21.75	25.66	20.80	5.14	11.30	11.41	12.83
2600.00	5.51	5.58	5.53	0.08	18.99	28.11	18.37	5.02	11.49	11.33	12.54
2700.00	5.50	5.59	5.54	0.08	16.91	27.40	16.50	4.88	11.65	11.46	12.34
2800.00	5.51	5.60	5.55	0.09	15.25	24.44	14.98	4.68	11.79	11.72	12.35



Mini-Circuits

INTERNET <http://www.minicircuits.com>
P.O. Box 350166, Brooklyn, New York 11235-0003 (718) 934-4500 Fax (718) 332-4661
Distribution Centers NORTH AMERICA 800-654-7949 • 417-335-5935 • Fax 417-335-5945 • EUROPE 44-1252-832600 • Fax 44-1252-837010
Mini-Circuits ISO 9001 & ISO 14001 Certified



REV. A
M98898
SCN-3-28
ED-11736/5
AD/DJ/CP
060109