

Crystal filter

QF 2.5-U0290/04



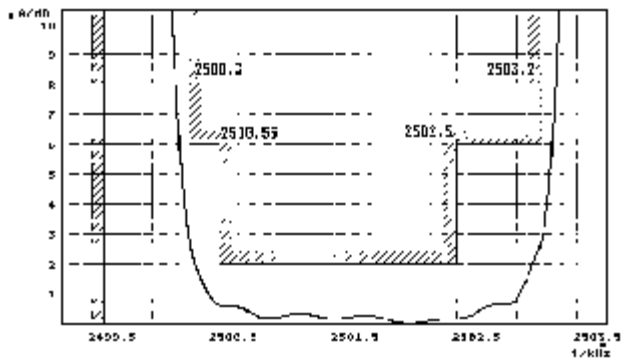
Application

- 8 pol filter
- i.f.- filter
- use in mobile and stationary transceivers

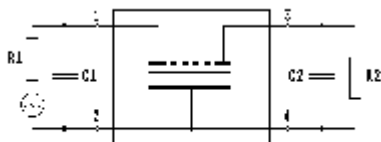
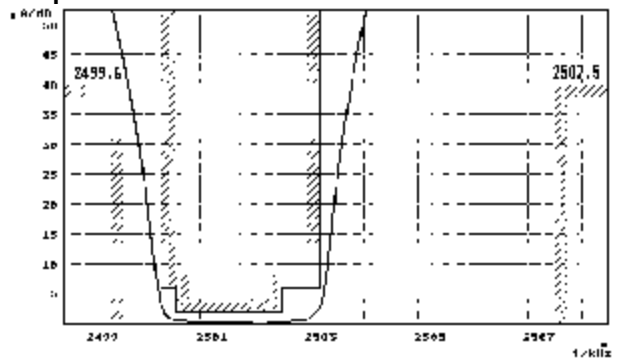
Limiting values		Unit	Value
Center frequency	f_0	MHz	2.5
Insertion loss		dB	≤ 4.0
Pass band at 6.0 dB		kHz	$+<0.3...>3.04$
Ripple in pass band	$f_0 + 0.59...2.375$ kHz	dB	≤ 2.0
	at $-10...+55^\circ\text{C}$ $f_0 + 0.55...2.5$ kHz	dB	≤ 2.0
Stop band attenuation	$f_0 - 0.4$ kHz; $f_0 + 7.5$ kHz	dB	≥ 40
Alternate attenuation		dB	> 60 (except spurious)
Input power		mW	< 10
Terminating impedance Z			
R1 C1		Ohm/pF	600 0
R2 C2		Ohm/pF	600 0
Operating temp. range		$^\circ\text{C}$	$-25... +70$

Characteristics QF 2.5-U0290/04

Pass band



Stop band



- Pin connections:
- 1 Input
 - 2 Ground-Input
 - 3 Output
 - 4 Ground-Output

