

# Monolithic crystal filter

## QF 1.4-U0200/05



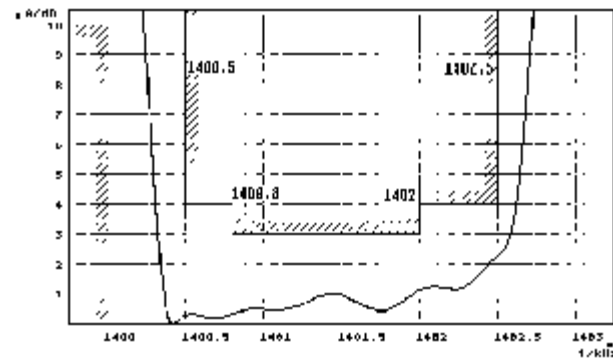
### Application

- 6 pol filter
- i.f.- filter
- use in mobile and stationary transceivers

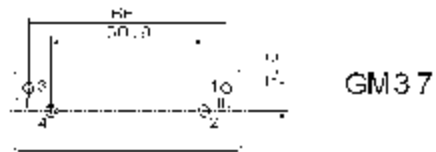
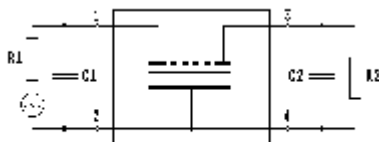
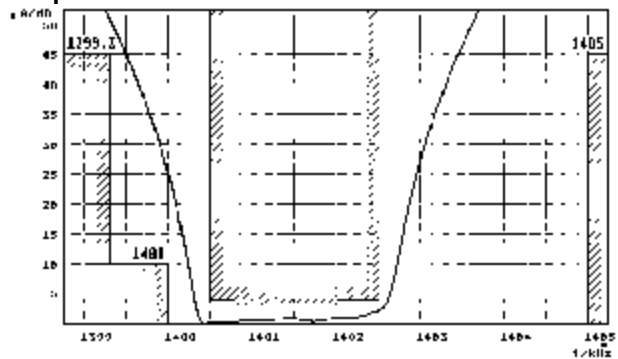
Limiting values		Unit	Value
Center frequency	fo	MHz	1.4
Insertion loss		dB	≅ 5.0
Pass band at 4.0 dB		kHz	+0.5...2.5
Ripple in pass band	fo +0.8...2 kHz	dB	≅ 3.0
Stop band attenuation	fo	dB	> 10
	fo -0.7 kHz; fo +5 kHz	dB	≅ 45
Alternate attenuation		dB	> 45 except spurious
Terminating impedance Z			
R1    C1		Ohm/pF	1000    75
R2    C2		Ohm/pF	1000    75
Operating temp. range		°C	-10... +65

### Characteristics QF 1.4-U0200/05

#### Pass band



#### Stop band



- Pin connections:
- 1 Input
  - 2 Ground-Input
  - 3 Output
  - 4 Ground-Output