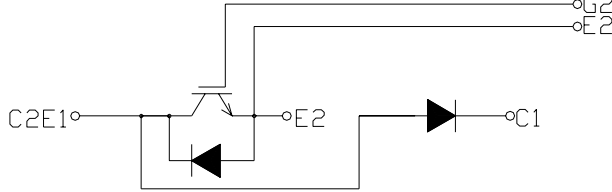


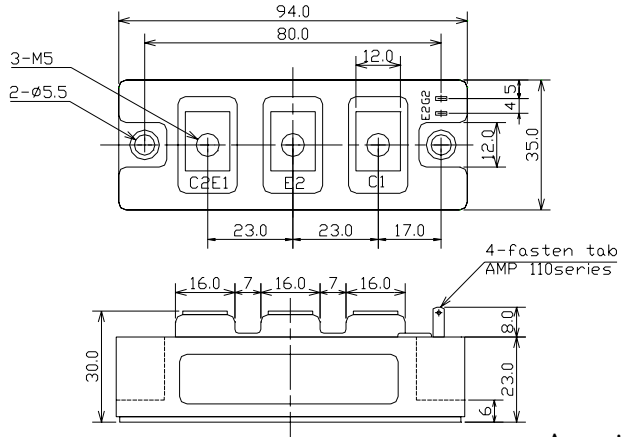
IGBT MODULE Chopper 50A 600V

PRHMB50A6A

CIRCUIT



OUTLINE DRAWING



2- fasten- tab No 110

Dimension(mm)

Approximate Weight : 220g

MAXMUM RATINGS (Tc=25°C)

Item	Symbol	PRHMB50A6A	Unit
Collector-Emitter Voltage	V_{CES}	600	V
Gate - Emitter Voltage	V_{GES}	+/- 20	V
Collector Current	DC	I_C	50
	1 ms	I_C	100
Collector Power Dissipation	P_C	250	W
Junction Temperature Range	T_j	-40 to +150	°C
Storage Temperature Range	T_{stg}	-40 to +125	°C
Isolation Voltage (Terminal to Base AC, 1 min.)	V_{ISO}	2500	V
Mounting Torque	Module Base to Heat sink	F_{TOR}	2.04
	Bus Bar to Main Terminals		
			N•m

ELECTRICAL CHARACTERISTICS (Tc=25°C)

Characteristic	Symbol	Test Condition	Min.	Typ.	Max.	Unit
Collector-Emitter Cut-Off Current	I_{CES}	$V_{CE}=600V, V_{GE}=0V$	-	-	1.0	mA
Gate-Emitter Leakage Current	I_{GES}	$V_{GE}=\pm 20V, V_{CE}=0V$	-	-	1.0	μA
Collector-Emitter Saturation Voltage	$V_{CE(sat)}$	$I_C=50A, V_{GE}=15V$	-	2.0	2.5	V
Gate-Emitter Threshold Voltage	$V_{GE(th)}$	$V_{CE}=5V, I_C=50mA$	4.0	-	8.0	V
Input Capacitance	C_{ies}	$V_{CE}=10V, V_{GE}=0V, f=1MHz$	-	5000	-	pF
Switching Time	Rise Time	$V_{CC}=300V$ $R_L=6\text{ ohm}$ $R_G=15\text{ ohm}$ $V_{GE}=\pm 15V$	-	0.15	0.3	μs
	Turn-on Time		-	0.25	0.4	
	Fall Time		-	0.2	0.35	
	Turn-off Time		-	0.45	0.7	

FREE WHEELING DIODES RATINGS & CHARACTERISTICS (Tc=25°C)

Item	Symbol	Rated Value	Unit
Forward Current	DC	I_F	50
	1 ms	I_{FM}	100

Characteristic	Symbol	Test Condition	Min.	Typ.	Max.	Unit
Peak Forward Voltage	V_F	$I_F=50A, V_{GE}=0V$	-	1.9	2.4	V
Reverse Recovery Time	t_r	$I_F=50A, V_{GE}=-10V, di/dt=50A/\mu s$	-	0.15	0.25	μs

THERMAL CHARACTERISTICS

Characteristic	Symbol	Test Condition	Min.	Typ.	Max.	Unit
Thermal Impedance	IGBT	Junction to Case	-	-	0.5	°C/W
	DIODE		-	-	1.0	

