

## AM CERAMIC FILTERS WITH MATCHING COIL

### Description

- AM filters combining low profile matching coil with CFMR, CFMD types.
- Center frequency range: 450 — 470kHz

### Features

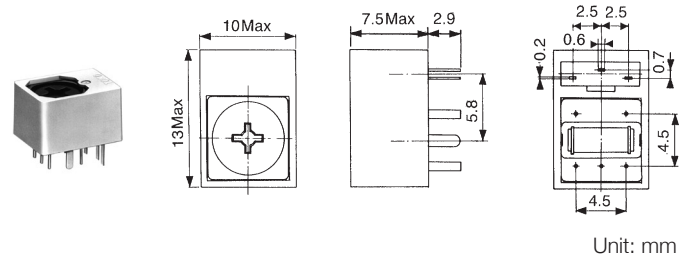
- Can be preset if required
- High selectivity, suited to a wide range of applications
- Low temperature coefficient
- Low spurious response
- Lead-free terminations

### Applications

- AM radio-cassettes, high selectivity radio cassettes
- Wireless data communication equipment

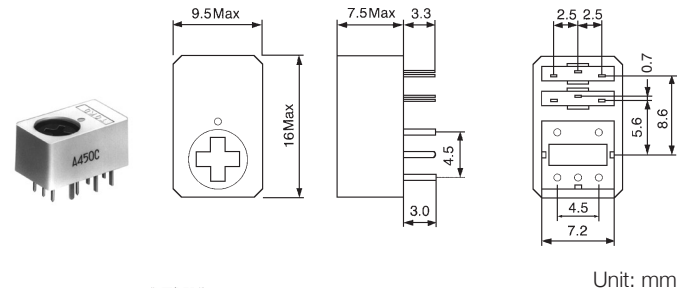
### Dimensions

CFML (7PSG+CFMR)  
(CERASIZER®/Triple-tuned)



Unit: mm

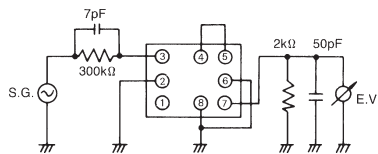
CFMJ (7PSG+CFMD)  
(CERASIZER®/Quintuple-tuned)



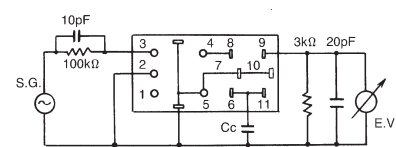
Unit: mm

### Test Circuits

CFML



CFMJ



Cc: 180 pF with CFMJ-001

## STANDARD FILTERS SELECTION GUIDE

### TYPE CFML/CFMJ (CERASIZER®)

TOKO Part Number	Center Frequency (kHz)	Bandwidth at 6dB (kHz)	Selectivity at $F_o \pm 9\text{kHz}$ (dB)	Ripple in Pass Band (dB)	Input Level for 0.6mV Output (dB)	Note
##PCFML-023	450±1.0	6.0 min.	23.0 min.	1.0 max.	77.0±3.0	Triple-tuned
##PCFMJ-001	450±1.0	6.0 min.	35.0 min.	2.0 max.	75.5±3.0	Quintuple-tuned



The information furnished by TOKO, Inc. is believed to be accurate and reliable. However, TOKO reserves the right to make changes or improvements in the design, specification or manufacture of its products without further notice. TOKO does not assume any liability arising from the application or use of any product or circuit described herein, nor for any infringements of patents or other rights of third parties which may result from the use of its products. No license is granted by implication or otherwise under any patent or patent rights of TOKO, Inc.