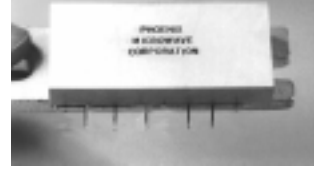


**PA1151**  
**4 Watt**

**1930-1990 MHz. PCS**  
**Ultra Linear Power Amplifier**



**M/A-COM**



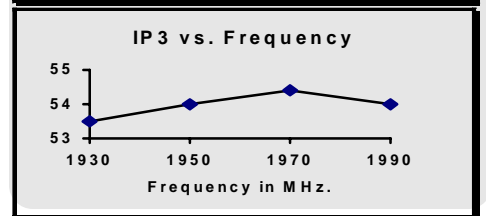
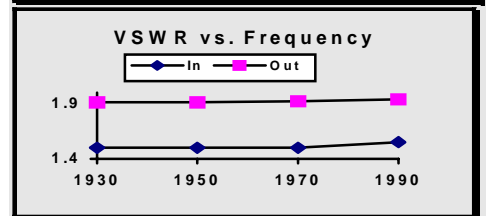
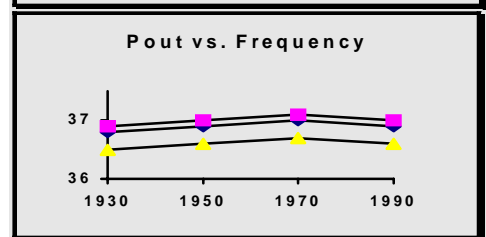
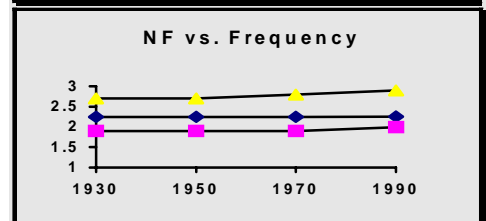
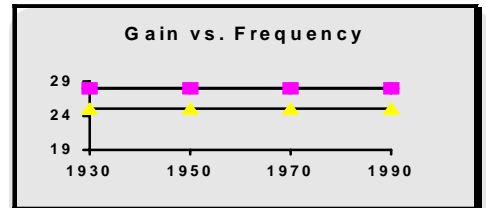
**Features (typical values)**

- High IP3** ..... +54.0 dBm.
- Low NF** ..... 2.4 dB.
- High Output Power** ..... +36.8 dBm.
- Low Cost**

Parameter	Typical Value	Min. Value	Max. Value	Units
Frequency		1930	1990	MHz.
Gain	26.5	25.0		dB.
Gain Flatness	±0.5			dB.
Reverse Isolation	45			dB.
Pout @ 1dB. comp.	36.8	36.0		dBm.
Noise Figure	2.4		3.5	dB.
IP3	+54.0	+52.0		dBm.
VSWR	1.5:1/2:1		2.0:2.5:1	
Supply Req'd	+10/1350		+10/1700	v./mA.

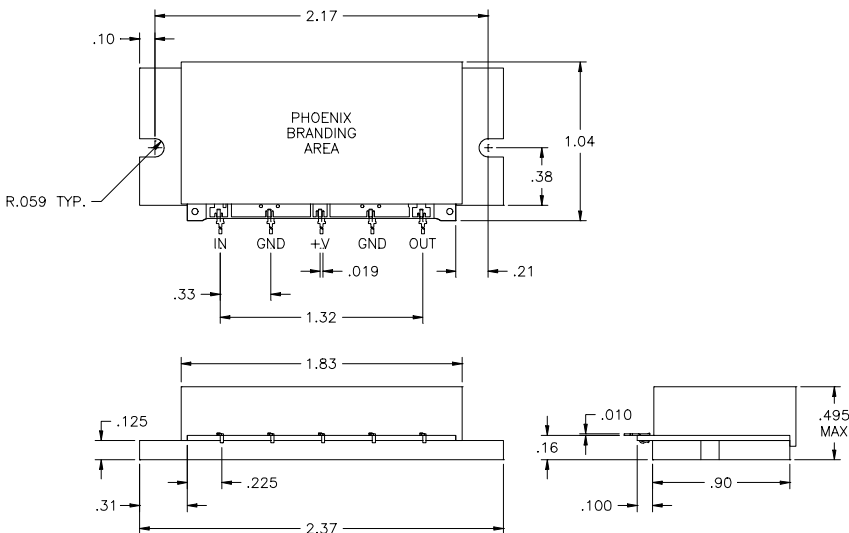
**Typical Performance @**

--♦-- +25°C --■-- -0°C --△-- +85°C



IP3 measured with 2 tones @+22dBm. per tone  
Min and max values from 0 to 85 degrees C  
CDMA data available

**Outline Drawings**



**Maximum Ratings**

- Storage Temperature ..... -40°C to +125°C
- DC Voltage ..... +12 volts
- RF Input Power ..... +15 dBm.
- Case Temperature ..... +95°C