

FRD MODULE 30A/400V

P2H30F4

FEATURES

- * Compatible with Isolated Base SOT227
- * Dual Separated Diodes
- * Ultra – Fast Recovery
- * Low Forward Voltage Drop
- * High Surge Capability

OUTLINE DRAWING

See the Next Page

TYPICAL APPLICATIONS

- * High Frequency Rectification

Maximum Ratings

Approx Net Weight:35g

Parameter	Symbol	Type / Grade		Unit
		P2H30F4	-	
Repetitive Peak Reverse Voltage *1	V_{RRM}	400	-	V
Non Repetitive Peak Reverse Voltage *1	V_{RSM}	-	-	

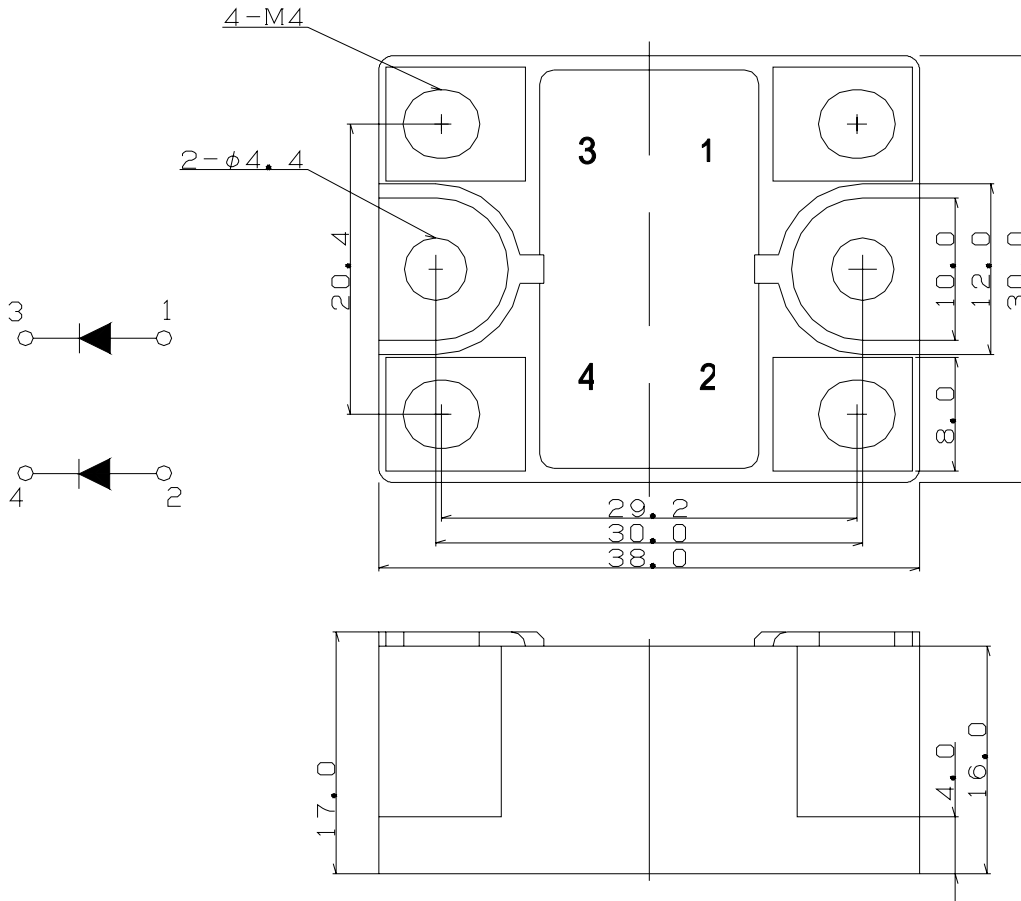
Parameter		Conditions	Max Rated Value	Unit	
Average Rectified Output Current *1	$I_{O(AV)}$	50Hz Half Sine Wave condition $T_c=75^\circ\text{C}$	30	A	
RMS Forward Current *1	$I_{F(RMS)}$		47	A	
Surge Forward Current *1	I_{FSM}	50 Hz Half Sine Wave,1Pulse Non-repetitive	300	A	
I Squared t *1	I^2t	2msec to 10msec	450	A^2s	
Operating JunctionTemperature Range	T_{jw}		-40 to +150	$^\circ\text{C}$	
Storage Temperature Range	T_{stg}		-40 to +125	$^\circ\text{C}$	
Isoration Voltage	Viso	Base Plate to Terminals, AC1min	2500	V	
Mounting torque	Case mounting	Ftor	M4Screw	1.5(1.4)	N.m
	Terminals		M4Screw	1.5(1.4)	

Electrical • Thermal Characteristics

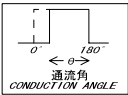
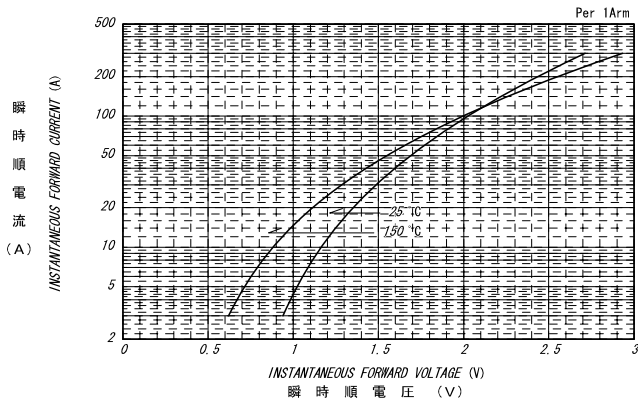
Characteristics	Symbol	Test Conditions	Max.	Unit
Peak Reverse Current *1	I_{RM}	$V_{RM}= V_{RRM}, T_j= 25^\circ\text{C}$	50	μA
Peak Forward Voltage *1	V_{FM}	$I_{FM}= 30\text{A}, T_j=25^\circ\text{C}$	1.33	V
Reverse Recovery Time	trr	$T_j=25^\circ\text{C}, I_{FM}=10\text{A}, -di/dt=50\text{A}/\mu\text{s}$	60	ns
Thermal Resistance *1	Rth(j-c)	Junction to Case	1.53	$^\circ\text{C}/\text{W}$
	Rth(c-f)	Base Plate to Heat Sink with Thermal Compound	0.3	

*1: Value Per 1Arm

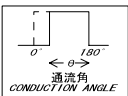
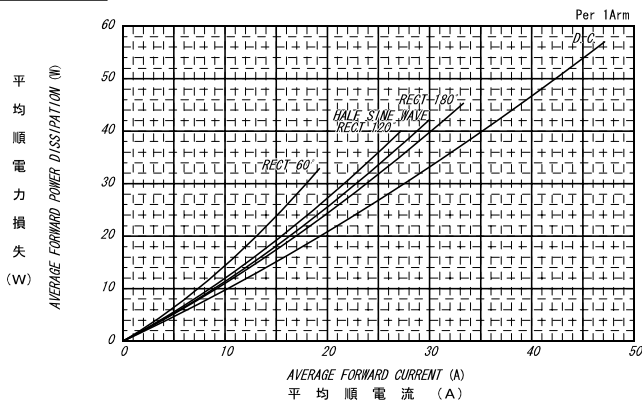
P2H30F4 OUTLINE DRAWING (Dimensions in mm)



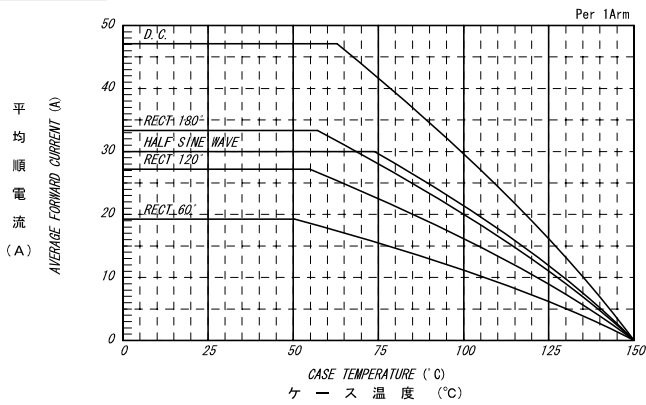
順電圧特性
FORWARD CURRENT VS. VOLTAGE



平均順電力損失特性
AVERAGE FORWARD POWER DISSIPATION

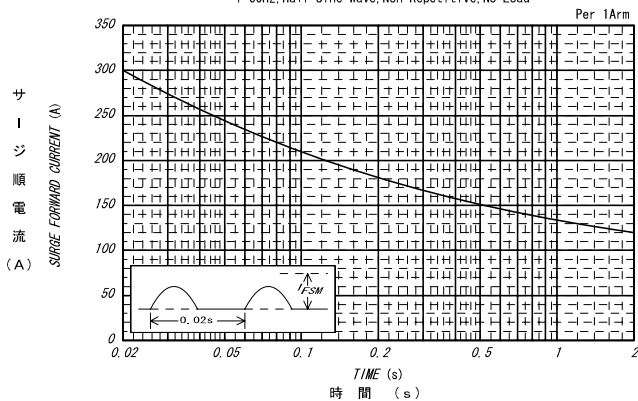


平均順電流 - ケース温度定格
AVERAGE FORWARD CURRENT VS. CASE TEMPERATURE



サージ順電流定格
SURGE CURRENT RATINGS

f=50Hz, Half Sine Wave, Non-Repetitive, No Load



過渡熱抵抗特性
MAXIMUM TRANSIENT THERMAL IMPEDANCE
Junction to Case

