

NTE2543
Silicon NPN Transistor
Darlington, Motor/Relay Driver

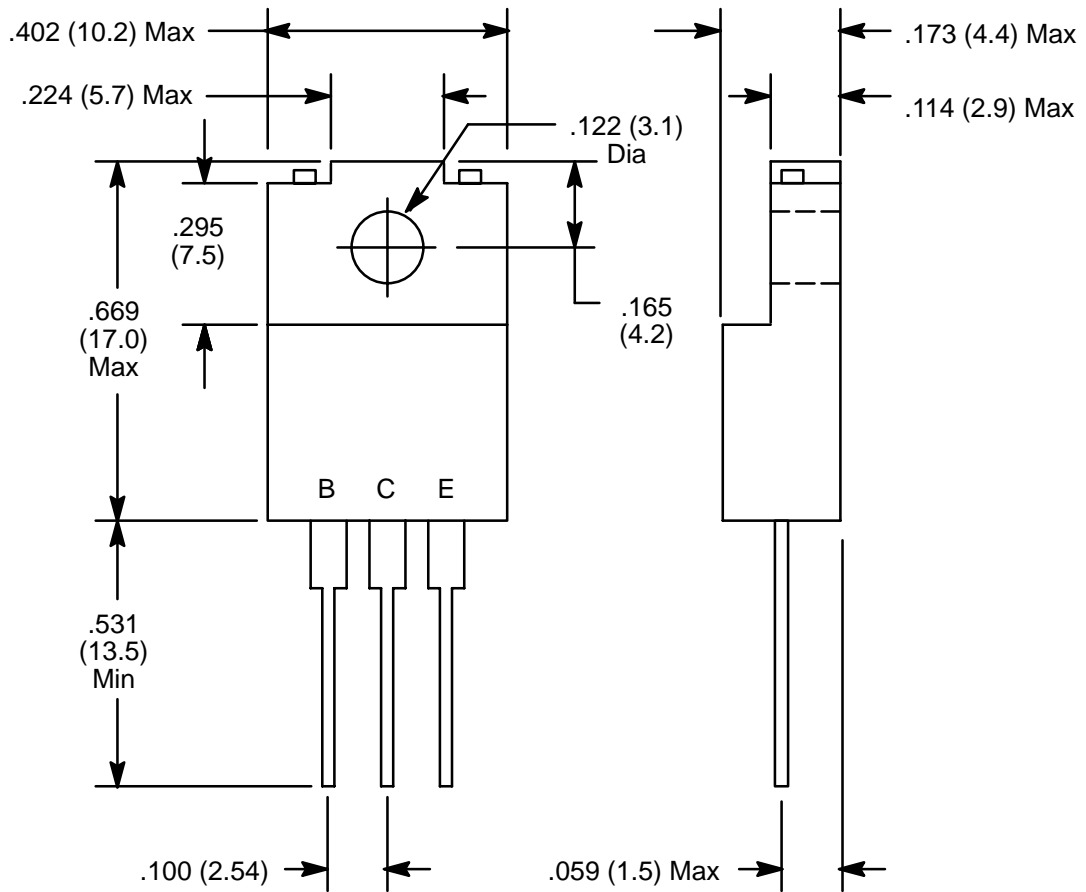
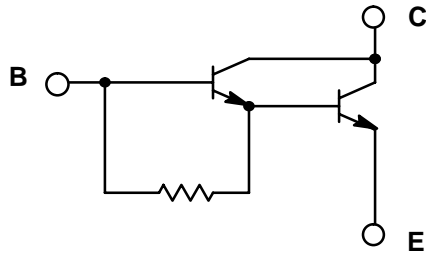
Absolute Maximum Ratings:

Collector Base Voltage, V_{CBO}	300V
Collector Emitter Voltage, V_{CEO}	250V
Emitter Base Voltage, V_{EBO}	20V
Collector Current, I_C	6A
Base Current, I_B	1A
Collector Power Dissipation ($T_{FL} = +25^{\circ}C$), P_C	40W
Operating Junction Temperature, T_J	+150°C
Storage Temperature Range, T_{stg}	-55° to +150°C

Electrical Characteristics:

Parameter	Symbol	Test Conditions	Min	Typ	Max	Unit
Collector Cutoff Current	I_{CBO}	$V_{CB} = 300V, I_E = 0$	-	-	100	μA
Emitter Cutoff Current	I_{EBO}	$V_{EB} = 20V, I_C = 0$	-	-	10	mA
Collector-Emitter Breakdown Voltage	$V_{(BR)CEO}$	$I_C = 25mA, R_{BE} = \infty$	250	-	-	V
DC Current Gain	h_{FE}	$V_{CE} = 2V, I_C = 2A$	2000	-	-	
Collector-Emitter Saturation Voltage	$V_{CE(sat)}$	$I_C = 2A, I_B = 2mA$	-	-	1.5	V
Base-Emitter Saturation Voltage	$V_{BE(sat)}$	$I_C = 2A, I_B = 2mA$	-	-	2.0	V

Schematic Diagram



NOTE: Tab is isolated