

TRI-STATE BUFFER

■ GENERAL DESCRIPTION

The NJU6342 Series is a tri-state buffer which is input the external ECL oscillation signal and output C-MOS level signal.

It consists of an amplifier and tri-state output buffer.

The input/output frequency is as wide as up to 120MHz and the symmetry of 45-55% is realized over full operating frequency range.

NJU6342H is TTL compatible and capable of 5 TTL driving.

NJU6342 is FACT equivalent.

■ PACKAGE OUTLINE



NJU6342XC



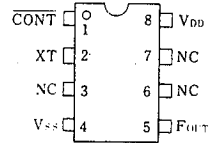
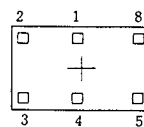
NJU6342XE

4

■ FEATURES

- Operating Voltage -- 4.0~6.0V
- Maximum Oscillation Frequency -- 120MHz
- Low Operating Current
- High Fan-out NJU6342 :FACT equivalent
NJU6342H:5TTL
- 3-state Output Buffer
- Output Stand-by Function
- Package Outline -- CHIP/EMP 8
- C-MOS Technology

■ PIN CONFIGURATION/PAD LOCATION



■ LINE-UP TABLE

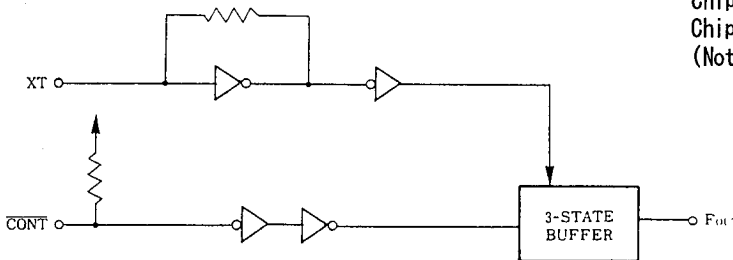
VERSION	Fan-out
NJU6342	FACT equivalent($I_{OL}/I_{OH}=24mA$)
NJU6342H	5TTL

■ COORDINATES

Unit: μm

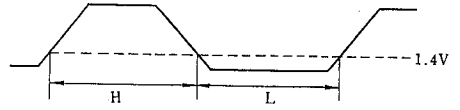
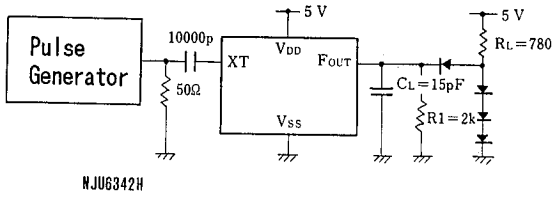
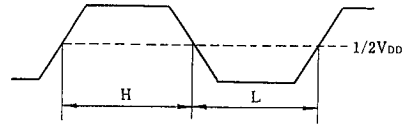
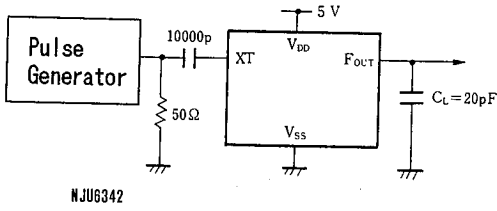
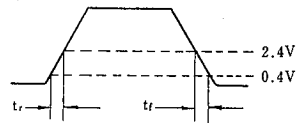
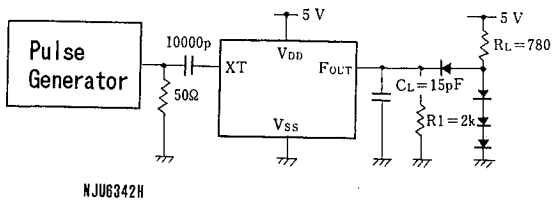
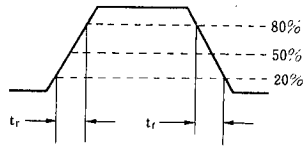
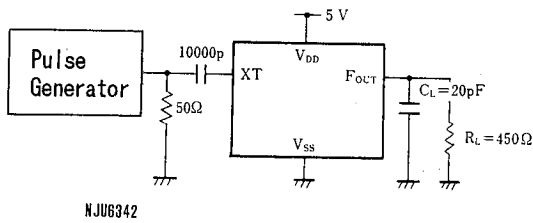
No.	PAD	X	Y
1	CONT	- 29	181
2	XT	- 462	181
3	NC	- 463	- 181
4	V _{SS}	- 44	- 229
5	F _{OUT}	564	- 229
8	V _{DD}	564	229

■ BLOCK DIAGRAM



Chip Size : 1.49 X 0.8mm
 Chip Center : X=0 μm , Y=0 μm
 Chip Thickness : 400 $\mu m \pm 30\mu m$

(Note) No. 6 and 7 terminals are only for package type information. There are no PAD on the chip.

MEASUREMENT CIRCUITS
(1) Output Symmetry

(2) Output Rise / Fall Time


NJU6342 Series

MEMO

[CAUTION]

The specifications on this databook are only given for information, without any guarantee as regards either mistakes or omissions. The application circuits in this databook are described only to show representative usages of the product and not intended for the guarantee or permission of any right including the industrial rights.