

# Monolithic crystal filter

## MQF70.0-1000/07



### Application

- 6 pol filter
- i.f.- filter
- use in mobile and stationary transceivers

### Limiting values

		Unit	Value
Center frequency	$f_0$	MHz	70.0
Insertion loss		dB	$\leq 6.0$
Pass band at 3.0 dB		kHz	$\pm 5.00$
Ripple in pass band	$f_0 \pm 4.00$ kHz	dB	$\leq 2.0$
Stop band attenuation	$f_0 \pm 10$ kHz	dB	$\geq 30$
	$f_0 \pm 20$ kHz	dB	$> 60$

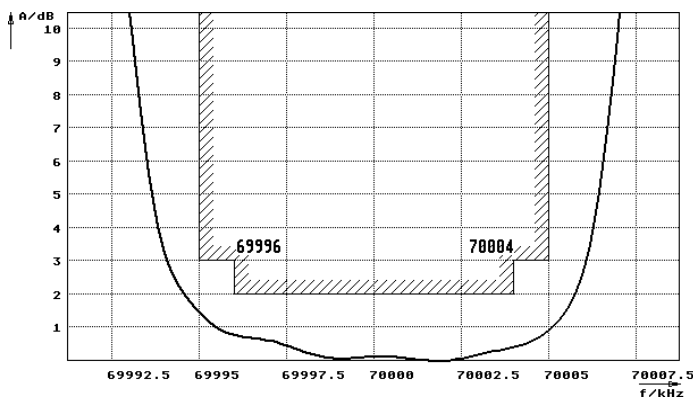
### Terminating impedance Z

R1    C1	Ohm/pF	50    0
R2    C2	Ohm/pF	50    0

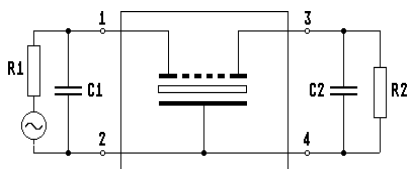
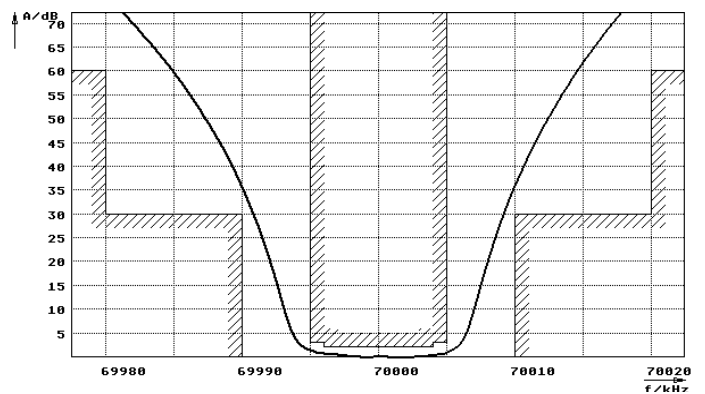
Operating temp. range	$^{\circ}\text{C}$	+5... +50
-----------------------	--------------------	-----------

### Characteristics MQF70.0-1000/07

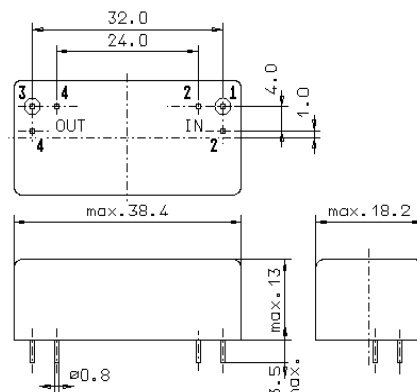
#### Pass band



#### Stop band



Pin connections: 1 Input  
2 Input-E  
3 Output  
4 Output-E



GM17