

Monolithic crystal filter

MQF61.44-1500/01



Application

- 2 pol filter
- i.f.- filter
- use in mobile and stationary transceivers

Limiting values		Unit	Value
Nominal frequency	f_0	MHz	61.44
Insertion loss		dB	< 3.0
Pass band at 3.0dB		kHz	$\pm > 7.5$
Ripple in pass band	$f_0 \pm 5 \text{ kHz}$	dB	< 1.0
Stop band attenuation	$f_0 \pm 100 \text{ kHz}$	dB	> 30
	$f_0 \pm 500 \text{ kHz}$	dB	> 40
Alternate attenuation	$f_0 \pm > 500 \text{ kHz}$	dB	> 40 except spurious

Terminating impedance Z

$R1 \parallel C1$

Ohm/pF 3000 || -0.80 ?

$R2 \parallel C2$

Ohm/pF 3000 || -0.80 ?

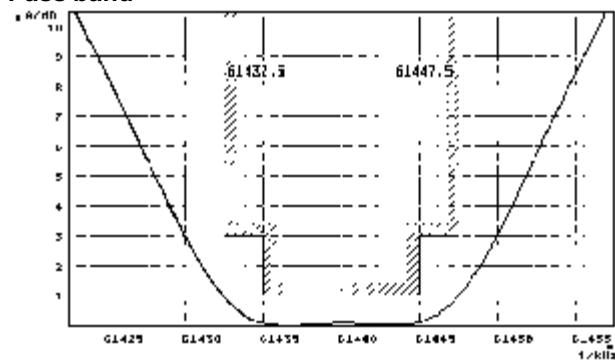
Operating temp. range

°C

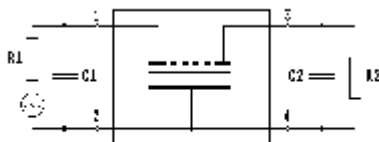
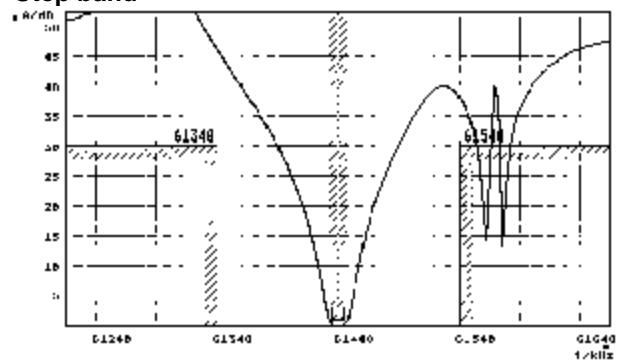
-20... +70

Characteristics MQF61.44-1500/01Var2

Pass band



Stop band



- Pin connections:
- 1 Input
 - 2 Ground-Input
 - 3 Output
 - 4 Ground-Output

