

# Monolithic crystal filter

## MQF45.0-3000/01

### Application

- 2 pol filter
- i.f.- filter
- use in mobile and stationary transceivers

### Limiting values

		Unit	Value
Center frequency	$f_0$	MHz	45.0
Insertion loss		dB	$\leq 2.0$
Pass band at 3.0 dB		kHz	$\pm 15.00$
Ripple in pass band	$f_0 \pm 10.00$ kHz	dB	$\leq 1.0$
Stop band attenuation	$f_0 \pm 50$ kHz	dB	$\geq 15$
Alternate attenuation	$f_0 - 910$ kHz	dB	$> 65$

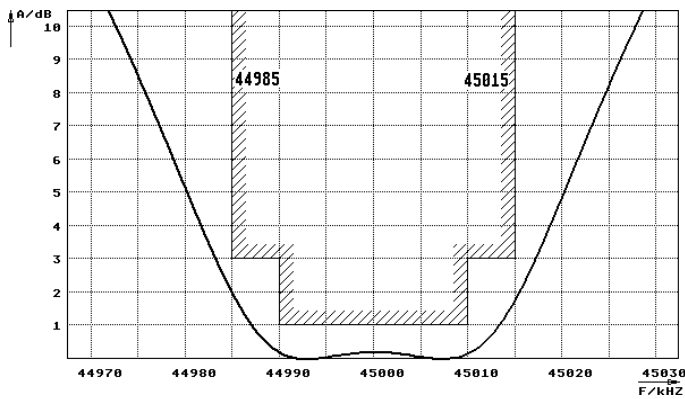
### Terminating impedance Z

R1    C1	Ohm/pF	650    4
R2    C2	Ohm/pF	650    4

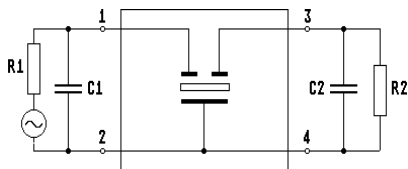
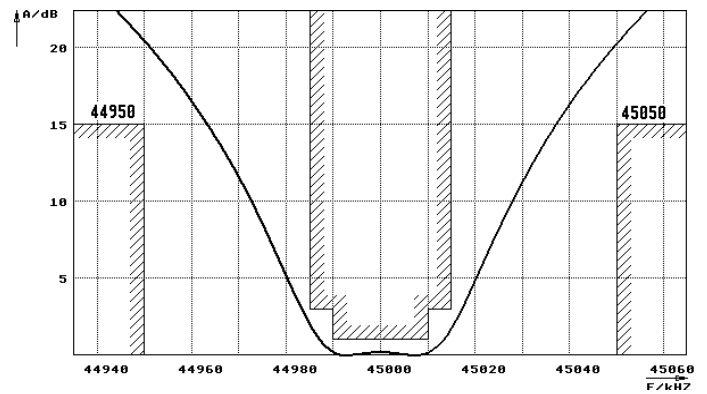
Operating temp. range	$^{\circ}\text{C}$	-20... +70
-----------------------	--------------------	------------

### Characteristics MQF45.0-3000/01

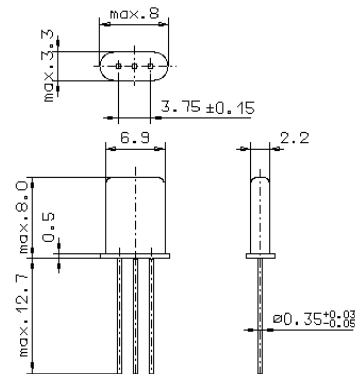
#### Pass band



#### Stop band



Pin connections: 1 Input  
2 Input-E  
3 Output  
4 Output-E



GH9