

# Monolithic crystal filter

## MQF45.0-0750/20



### Application

- 4 pol filter
- i.f.- filter
- use in mobile and stationary transceivers

### Limiting values

		Unit	Value
Center frequency	$f_0$	MHz	45.0
Insertion loss		dB	$\leq 5.0$
Pass band at 3.0 dB		kHz	$\pm 3.75$
Ripple in pass band	$f_0 \pm 3.00$ kHz	dB	$\leq 1.0$
Stop band attenuation	$f_0 \pm 12.5$ kHz	dB	$\geq 30$
Alternate attenuation	$f_0 \pm 910$ kHz	dB	$> 90$

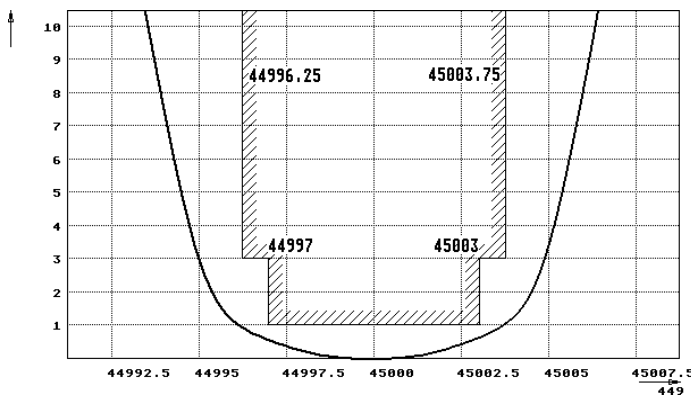
### Terminating impedance Z

R1    C1		Ohm/pF	350    6.5
R2    C2		Ohm/pF	350    6.5
Coupling capacitance	Ck	pF	18.0

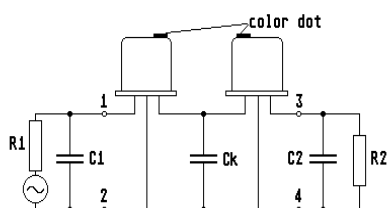
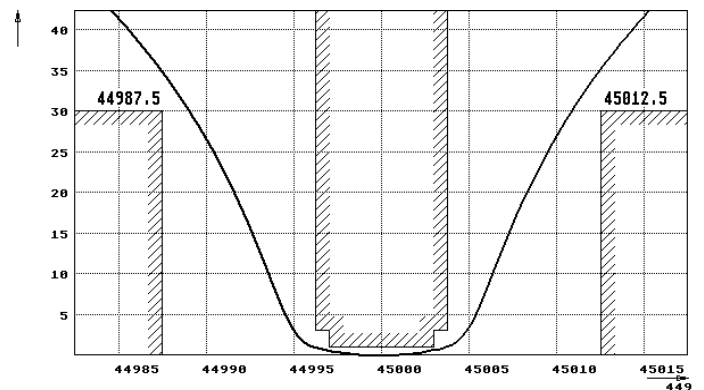
Operating temp. range		° C	-25... +70
-----------------------	--	-----	------------

### Characteristics MQF45.0-0750/20

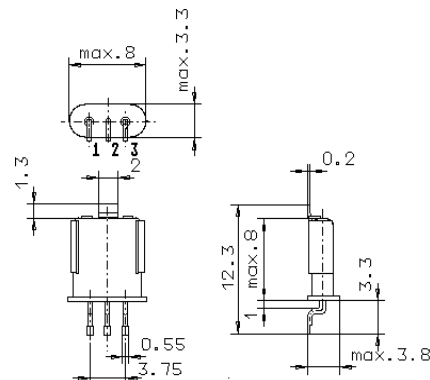
#### Pass band



#### Stop band



Pin connections: 1 Input  
2 Input-E  
3 Output  
4 Output-E



GH9/S