

Monolithic crystal filter

MQF45.0-0750/12



Application

- 2 pol filter
- i.f.- filter
- use in mobile and stationary transceivers

Limiting values

		Unit	Value
Center frequency	f_0	MHz	45.0
Insertion loss		dB	≤ 2.0
Pass band at 3.0 dB		kHz	± 3.75
Ripple in pass band	$f_0 \pm 2.50$ kHz	dB	≤ 1.0
Stop band attenuation	$f_0 \pm 12.5$ kHz	dB	≥ 15
Alternate attenuation	$f_0 - 100$ kHz	dB	> 45
	$f_0 + 500$ kHz	dB	> 45
	$f_0 \pm 910$ kHz	dB	> 70

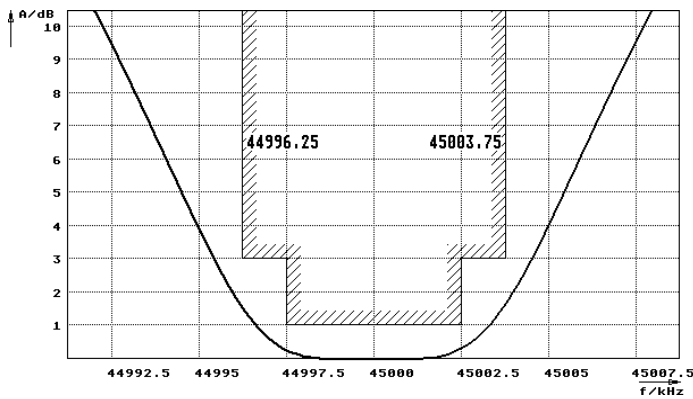
Terminating impedance Z

R1 C1	Ohm/pF	350 11
R2 C2	Ohm/pF	350 11

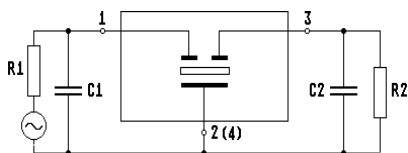
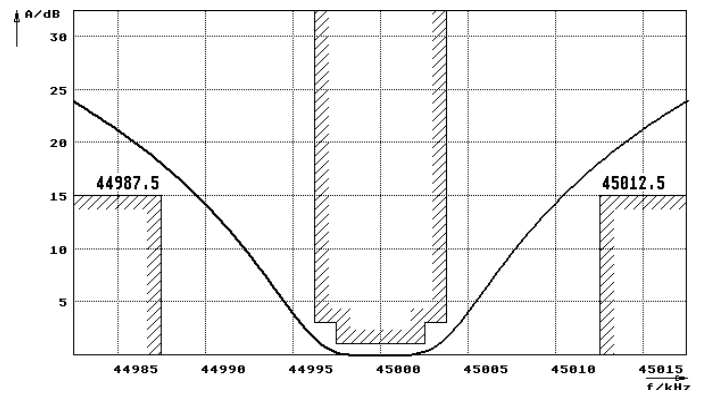
Operating temp. range	$^{\circ}\text{C}$	-20... +70
-----------------------	--------------------	------------

Characteristics MQF45.0-0750/12

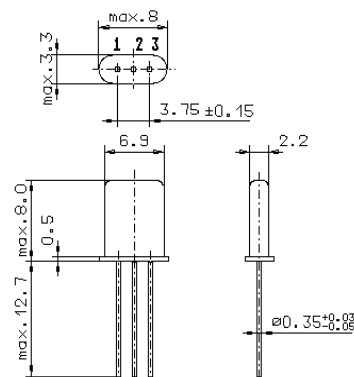
Pass band



Stop band



Pin connections: 1 Input
2 Input-E
3 Output
4 Output-E



GH9