

Monolithic crystal filter

MQF42.2-0800/02



Application

- 4 pol filter
- i.f.- filter
- use in mobile and stationary transceivers

Limiting values

		Unit	Value
Center frequency	f_0	MHz	42.2
Insertion loss		dB	≤ 3.0
Pass band at 1.0 dB		kHz	± 4.0
Ripple in pass band	$f_0 \pm 4.0$ kHz	dB	≤ 0.0
Stop band attenuation	$f_0 \pm 25$ kHz	dB	≥ 60
Alternate attenuation		dB	> 60
Spurious response		dB	> 40
Group delay distortion	$f_0 \pm 4$ kHz	μs	< 50
IP3	stop band/pass band	dBm	$>31/>25$

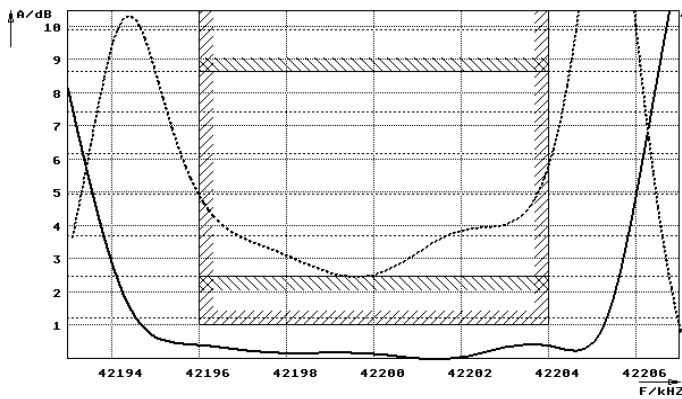
Terminating impedance Z

R1 C1	Ohm/pF	50 0
R2 C2	Ohm/pF	50 0

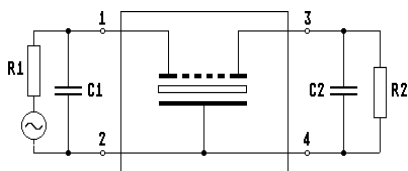
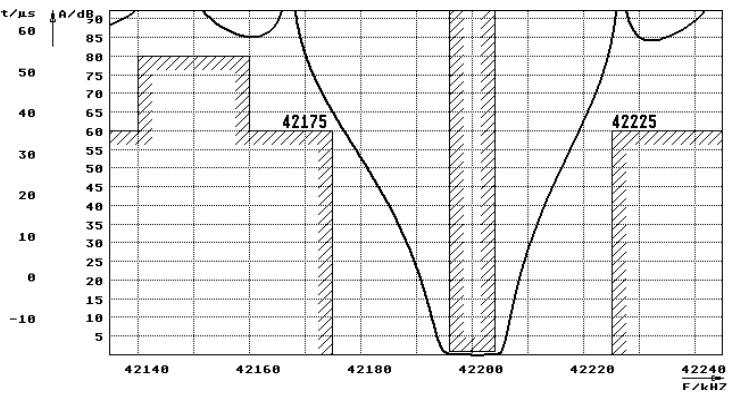
Operating temp. range ° C -25... +70

Characteristics MQF42.2-0800/02

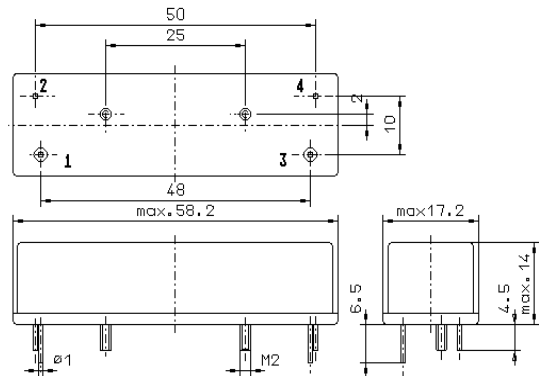
Pass band



Stop band



Pin connections: 1 Input
2 Input-E
3 Output
4 Output-E



GM7