

Monolithic crystal filter

MQF42.0-1000/01



Application

- 2 pol filter
- i.f.- filter
- use in mobile and stationary transceivers

Limiting values

		Unit	Value
Center frequency	f_0	MHz	42.0
Insertion loss		dB	≤ 3.0
Pass band at 3.0 dB		kHz	± 5.0
Ripple in pass band	$f_0 \pm 3.5$ kHz	dB	≤ 1.0
Stop band attenuation	$f_0 \pm 40$ kHz	dB	≥ 25
Centre frequency tolerance		/kHz:	± 1
Alternate attenuation	$f_0 - 40 \dots -1000$ kHz	dB	> 25
	$f_0 + 200 \dots 2000$ kHz	dB	> 25
	$f_0 \pm 1 \dots 10$ MHz	dB	> 45

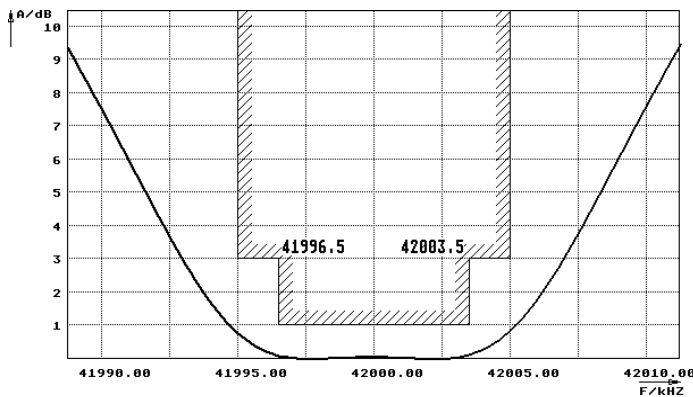
Terminating impedance Z

R1 C1	Ohm/pF	2200 -1.5
R2 C2	Ohm/pF	2200 -1.5

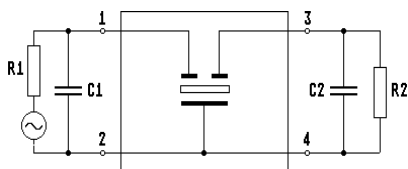
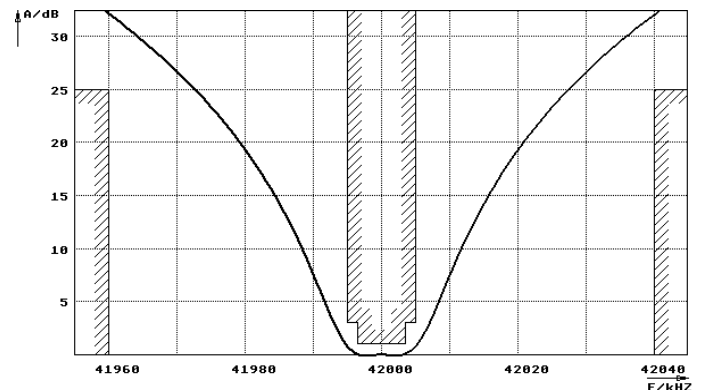
Operating temp. range	$^{\circ}\text{C}$	-20... +70
-----------------------	--------------------	------------

Characteristics MQF42.0-1000/01

Pass band



Stop band



Pin connections: 1 Input
2 Input-E
3 Output
4 Output-E

