

# Monolithic crystal filter

## MQF21.4-2000/26



### Application

- 6 pol filter
- i.f.- filter
- use in mobile and stationary transceivers

### Limiting values

		Unit	Value
Center frequency	$f_0$	MHz	21.4
Insertion loss		dB	$\leq 2.5$
Pass band at 3.0 dB		kHz	$\pm 10.00$
Ripple in pass band	$f_0 \pm 7.50$ kHz	dB	$\leq 2.0$
Stop band attenuation	$f_0 \pm 28$ kHz	dB	$\geq 60$
Alternate attenuation		dB	$> 60$ except spurious

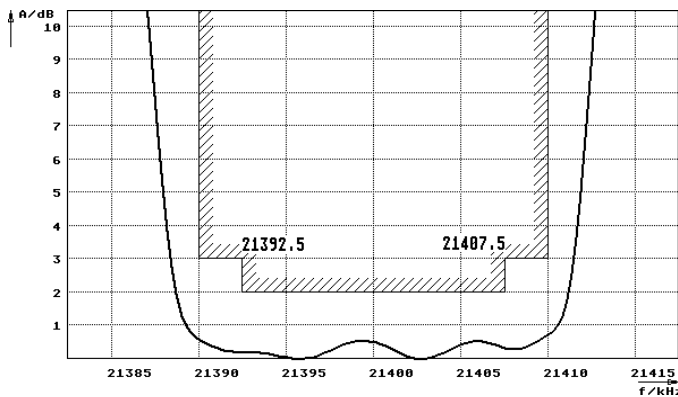
### Terminating impedance Z

R1    C1	Ohm/pF	1600    1
R2    C2	Ohm/pF	1600    1

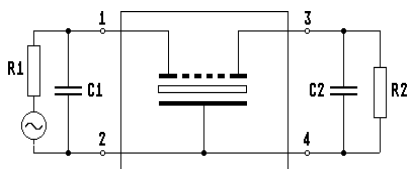
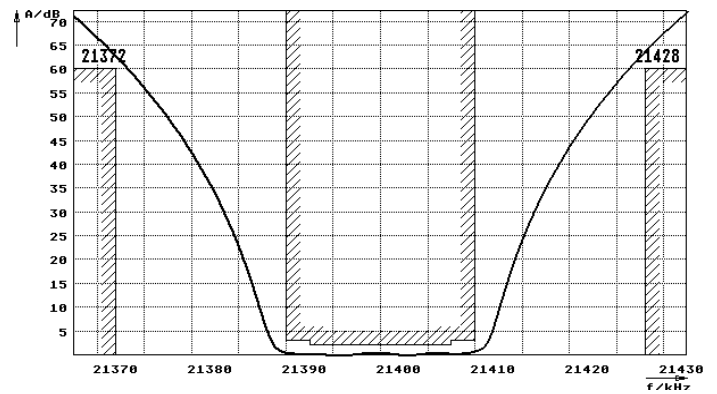
Operating temp. range	°C	-40... +85
-----------------------	----	------------

### Characteristics MQF21.4-2000/26

#### Pass band



#### Stop band



Pin connections: 1 Input  
2 Input-E  
3 Output  
4 Output-E

