

Monolithic crystal filter

MQF21.4-2000/06



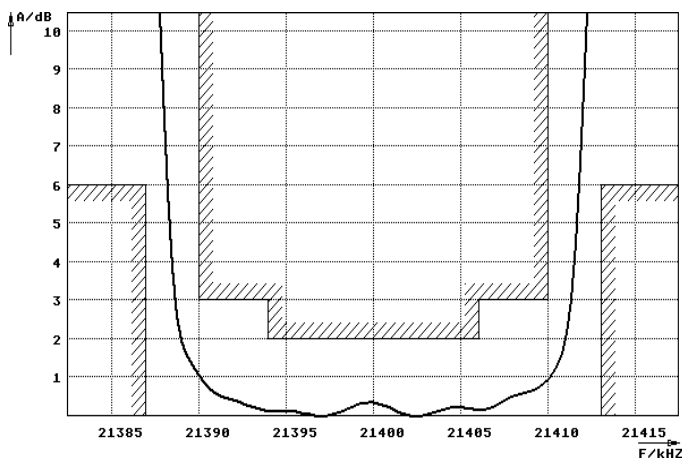
Application

- 8 pol filter
- i.f.- filter
- use in mobile and stationary transceivers

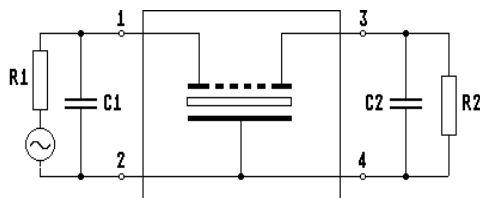
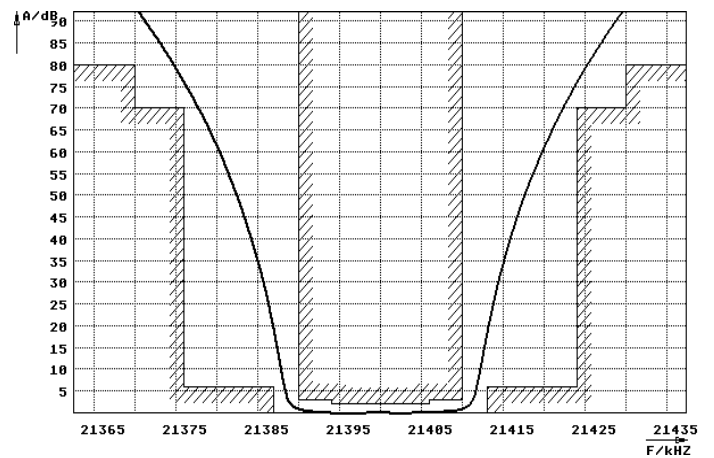
Limiting values		Unit	Value
Center frequency	f_0	MHz	21.4
Insertion loss		dB	≤ 4.0
Pass band at 3.0 dB		kHz	± 10.0
Ripple in pass band	$f_0 \pm 6.0$ kHz	dB	≤ 2.0
Stop band attenuation	$f_0 \pm 24$ kHz	dB	≥ 70
	$f_0 \pm 30$ kHz	dB	> 80
Terminating impedance Z			
R1 C1		Ohm/pF	470 15
R2 C2		Ohm/pF	470 15
Operating temp. range		$^{\circ}\text{C}$	-30... +80

Characteristics

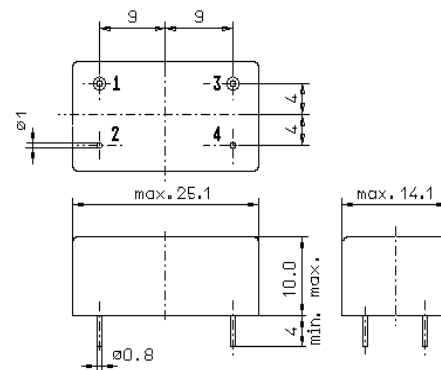
Pass band



Stop band



Pin connections: 1 Input
2 Input-E
3 Output
4 Output-E



GM3