

Monolithic crystal filter

MQF21.4-1200/17



Application

- 4 pol filter
- i.f.- filter
- use in mobile and stationary transceivers

Limiting values

| | | Unit | Value |
|-----------------------|--------------------|------|------------|
| Center frequency | f_0 | MHz | 21.4 |
| Insertion loss | | dB | ≤ 2.5 |
| Pass band at 3.0 dB | | kHz | ± 6.00 |
| Ripple in pass band | $f_0 \pm 4.00$ kHz | dB | ≤ 1.0 |
| Stop band attenuation | $f_0 \pm 20$ kHz | dB | ≥ 40 |

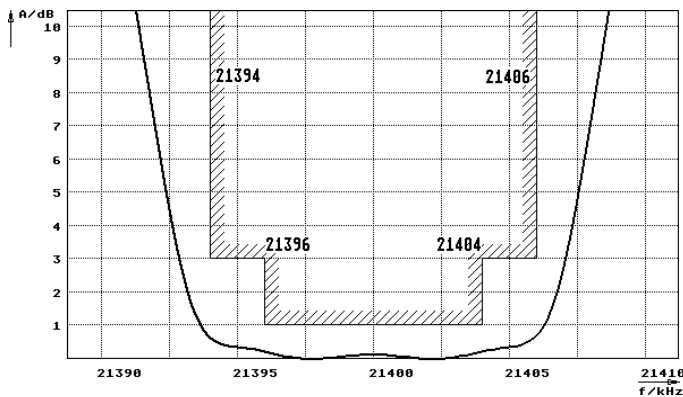
Terminating impedance Z

| | | | |
|----------------------|--------|----------|------|
| R1 C1 | Ohm/pF | 910 5 | |
| R2 C2 | Ohm/pF | 910 5 | |
| Coupling capacitance | Ck | pF | 13.2 |

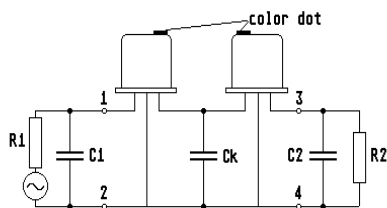
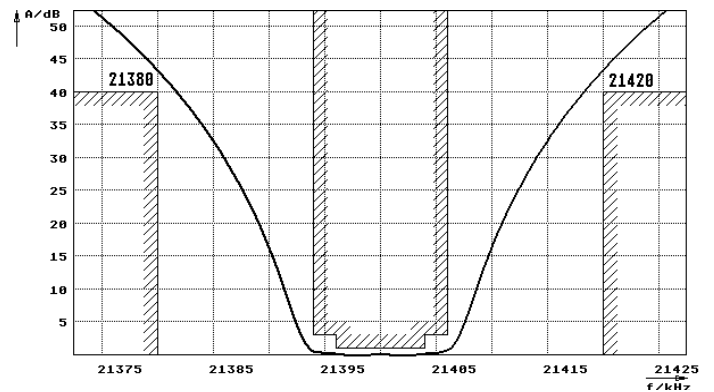
| | | |
|-----------------------|--------------------|-----------|
| Operating temp. range | $^{\circ}\text{C}$ | +0... +70 |
|-----------------------|--------------------|-----------|

Characteristics MQF21.4-1200/17

Pass band



Stop band



Pin connections: 1 Input
2 Input-E
3 Output
4 Output-E

