

Monolithic crystal filter

MQF21.4-1200/16



Application

- 2 pol filter
- i.f.- filter
- use in mobile and stationary transceivers

Limiting values

		Unit	Value
Center frequency	f_0	MHz	21.4
Insertion loss		dB	≤ 2.0
Pass band at 3.0 dB		kHz	± 6.00
Ripple in pass band	$f_0 \pm 4.00$ kHz	dB	≤ 0.5
Stop band attenuation	$f_0 \pm 22$ kHz	dB	≥ 18

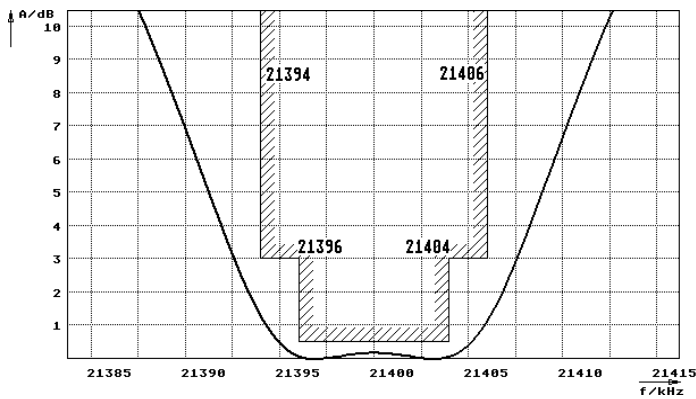
Terminating impedance Z

R1 C1	Ohm/pF	910 5
R2 C2	Ohm/pF	910 5

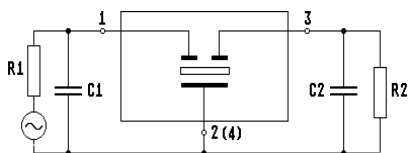
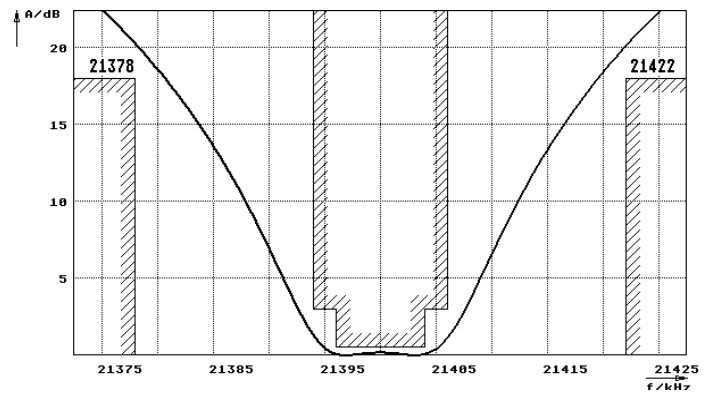
Operating temp. range	$^{\circ}\text{C}$	-20... +70
-----------------------	--------------------	------------

Characteristics MQF21.4-1200/16

Pass band



Stop band



Pin connections: 1 Input
2 Input-E
3 Output
4 Output-E

