

Monolithic crystal filter MQF10.7-1600/07

Application

- 8 pol filter
- i.f.- filter
- use in mobile and stationary transceivers

Limiting values

		Unit	Value
Center frequency	f_0	MHz	10.7
Insertion loss		dB	≤ 6.0
Pass band at 3.0 dB		kHz	$\pm 8.00 \dots \pm 9.60$
Ripple in pass band	$f_0 \pm 5.00$ kHz	dB	≤ 1.0
Stop band attenuation	$f_0 \pm 18$ kHz	dB	≥ 60
Alternate attenuation		dB	> 70 except spurious

Terminating impedance Z

R1 C1	Ohm/pF	50 0
R2 C2	Ohm/pF	50 0

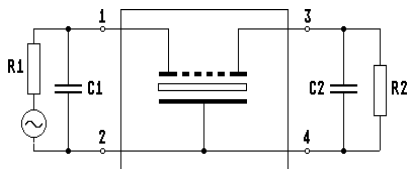
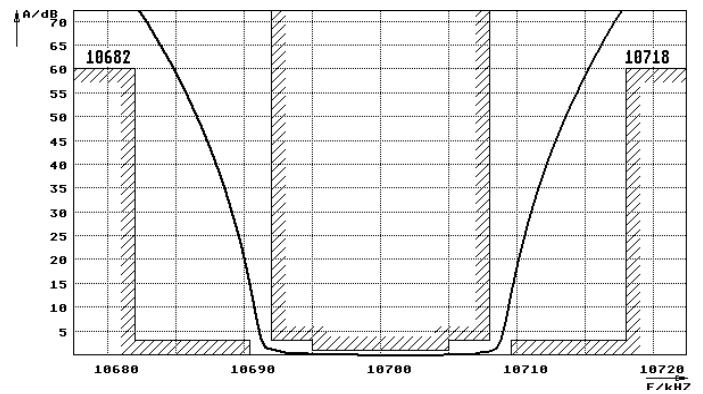
Operating temp. range	°C	-10... +70
-----------------------	----	------------

Characteristics MQF10.7-1600/07

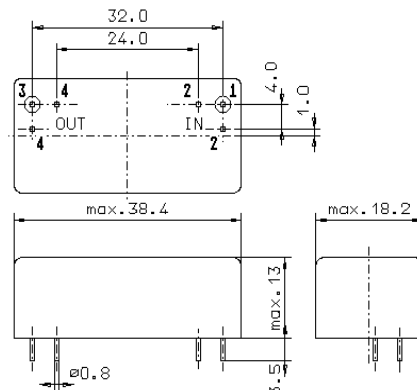
Pass band



Stop band



Pin connections: 1 Input
2 Input-E
3 Output
4 Output-E



GM17