

# Monolithic crystal filter

## MQF10.7-0300/11 (preliminary specification)



### Application

- 6 pol filter
- i.f.- filter
- use in mobile and stationary transceivers

| Limiting values            |                        | Unit | Value                       |
|----------------------------|------------------------|------|-----------------------------|
| Nominal frequency          | $f_0$                  | MHz  | 10.7                        |
| Centre frequency           | $f_c$ measured at 3 dB | MHz  | $10.7 \pm 400$ Hz           |
| Insertion loss             |                        | dB   | < 5.0                       |
| Pass band at 3.0dB         |                        | kHz  | $f_c \pm (1.35 \dots 1.65)$ |
| Ripple in pass band        | $f_0 \pm 0.75$ kHz     | dB   | < 0.5                       |
| Stop band attenuation      | $f_0 \pm 7.5$ kHz      | dB   | > 60                        |
| Alternate attenuation      |                        | dB   | > 80 except spurious        |
| VSWR                       | $f_c \pm 1.35$ kHz     |      | < 2                         |
| Phase difference for pairs | $f_c$                  | °    | < 12                        |
| Phase tracking             | $f_c \pm 1.2$ kHz      | °    | < 6 referred to $f_c$       |

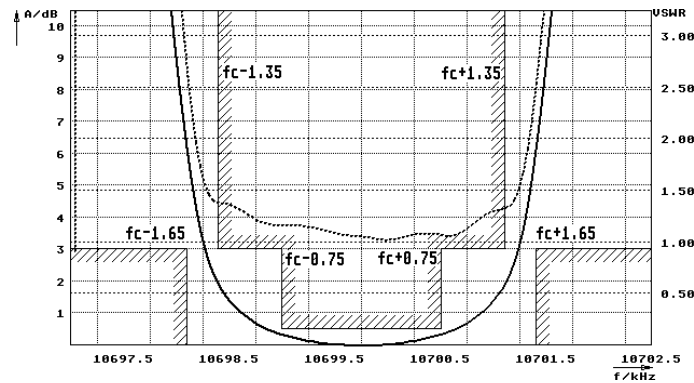
Terminating impedance Z

|        |        |         |
|--------|--------|---------|
| R1  C1 | Ohm/pF | 50    0 |
| R2  C2 | Ohm/pF | 50    0 |

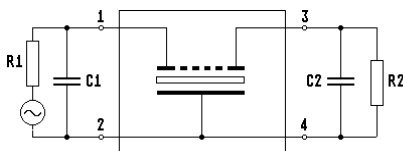
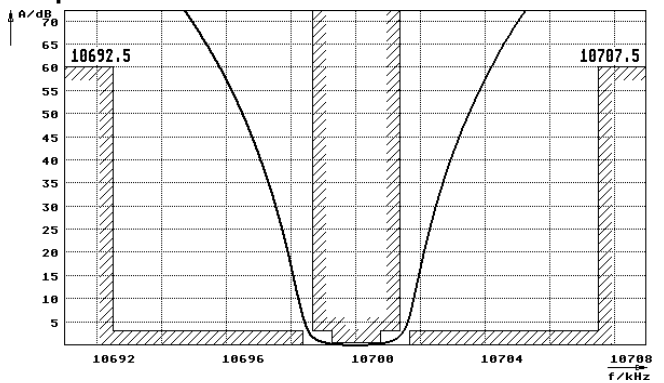
Operating temp. range °C +0... +50

### Characteristics MQF10.7-0300/11

#### Pass band



#### Stop band



- Pin connections:
- 1 Input
  - 2 Ground-Input
  - 3 Output
  - 4 Ground-Output

