

Monolithic crystal filter

MQF10.0-1900/04



Application

- 8 pol filter
- i.f.- filter
- use in mobile and stationary transceivers

Limiting values

		Unit	Value
Center frequency	f_0	MHz	10.0
Insertion loss		dB	≤ 2.0
Pass band at 6.0 dB		kHz	± 9.50
Ripple in pass band	$f_0 \pm 7.00$ kHz	dB	≤ 2.0
Stop band attenuation	$f_0 \pm 15$ kHz	dB	≥ 40
	$f_0 \pm 18$ kHz	dB	> 60
Alternate attenuation		dB	> 90

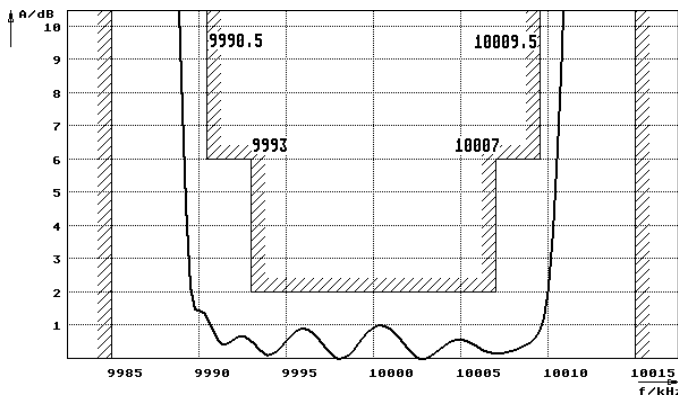
Terminating impedance Z

R1 C1	Ohm/pF	9000 0
R2 C2	Ohm/pF	9000 0

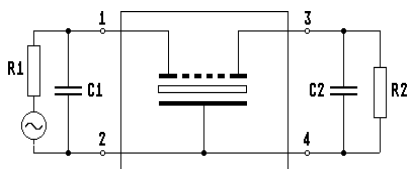
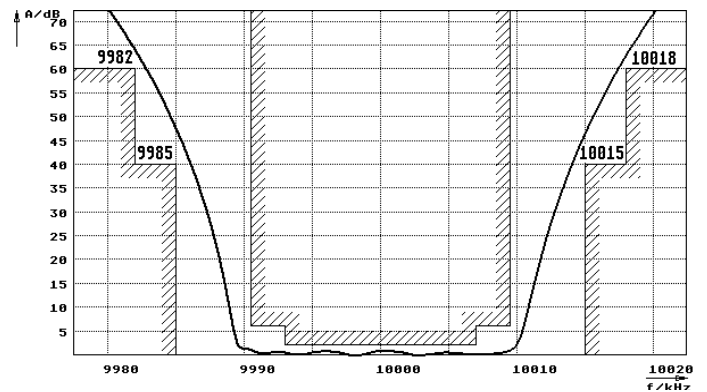
Operating temp. range	$^{\circ}\text{C}$	-20... +70
-----------------------	--------------------	------------

Characteristics MQF10.0-1900/04

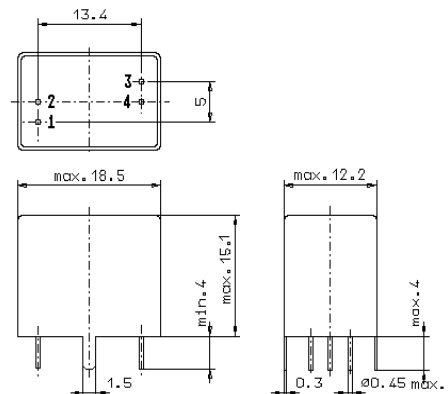
Pass band



Stop band



Pin connections: 1 Input
2 Input-E
3 Output
4 Output-E



GV5.1