



Micro Commercial Components

Micro Commercial Components  
 20736 Marilla Street Chatsworth  
 CA 91311  
 Phone: (818) 701-4933  
 Fax: (818) 701-4939

# MC79L06BP

## Features

- Internal Short Circuit Current Limiting
- Internal Thermal Overload Protection
- No External Components Required

## Absolute Maximum Ratings

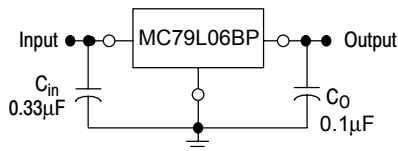
Parameter	Symbol	Value	Unit
Input Voltage	$V_1$	30	V
Operating Junction Temperature	$T_{OPR}$	-30---+75	°C
Storage Temperature Range	$T_{STG}$	-40---+125	°C

## Electrical Characteristics ( $V_i=12V$ , $I_o=40mA$ , $0^\circ C < T_j < 125^\circ C$ , $C_1=0.33\mu F$ , $C_o=0.1\mu F$ , unless otherwise specified)

Parameter	Sym	Min	Typ	Max	Test conditions
Output Voltage	$V_o$	5.76V	6.0V	6.24V	$V_i=12V$ , $I_o=40mA$
Load Regulation	$V_o - I_o$		7.0mV	60mV	$I_o=1mA-100mA$ , $V_i=12V$
Line regulation	$V_o - V_i$		15mV	150mV	$8.5V \leq V_i \leq 20V$ , $I_o=40mA$
Quiescent Current	$I_q$		3.5mA	6.0mA	$V_i=12V$ , $I_o=40mA$
Output Noise Voltage	$V_N$		120 $\mu$ V		$10Hz \leq f \leq 100KHz$ $V_i=12V$ , $I_o=40mA$
Ripple Rejection	RR	41dB	71dB		$9V \leq V_i \leq 19V$ , $I_o=40mA$ $f=120Hz$ , $T_j=25^\circ C$ $e_{IN}=1V_{P-P}$

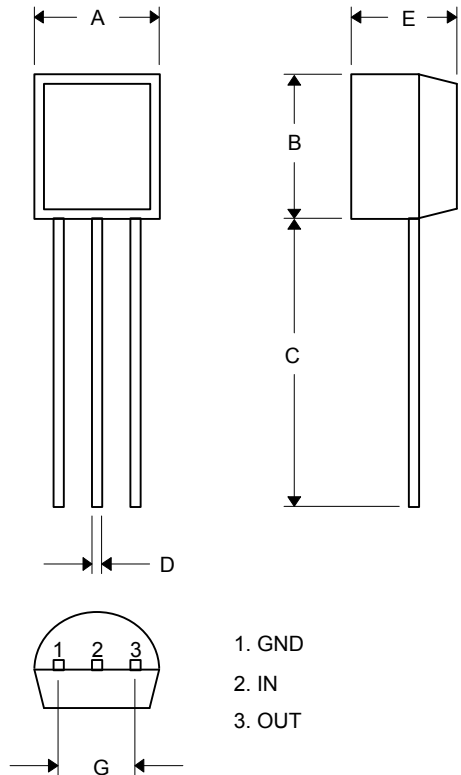
\*Note: Bypass Capacitors are recommended for optimum stability and transient response and should be located as close as possible to the regulators

Typical Application:



## Three-Terminal Low Current Negative Voltage Regulator

### TO-92



DIM	INCHES		MM		NOTE
	MIN	MAX	MIN	MAX	
A	.175	.185	4.45	4.70	
B	.175	.185	4.46	4.70	
C	.500	---	12.7	---	
D	.016	.020	0.41	0.63	
E	.135	.145	3.43	3.68	
G	.095	.105	2.42	2.67	