



Micro Commercial Components  
 21201 Itasca Street Chatsworth  
 CA 91311  
 Phone: (818) 701-4933  
 Fax: (818) 701-4939

## MB251D

### Features

- High Conductivity Metal Case
- Any Mounting Position
- Surge Rating Of 300 Amps

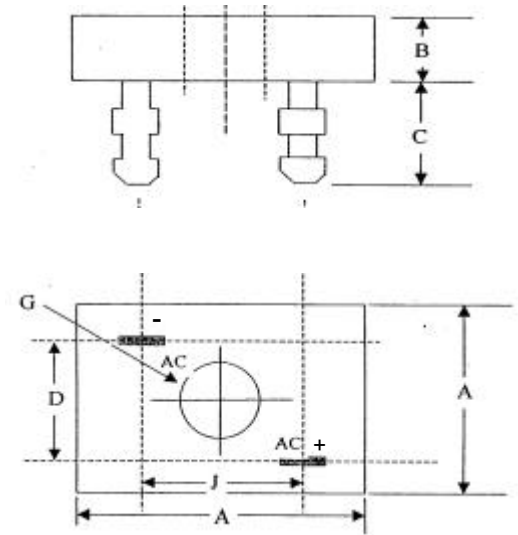
## 25 Amp Single Phase Bridge Rectifier 110 Volts

### Maximum Ratings

- Operating Temperature: -55°C to +125°C
- Storage Temperature: -55°C to +150°C

MCC Catalog Number	Device Marking	Maximum Recurrent Peak Reverse Voltage	Maximum RMS Voltage	Maximum DC Blocking Voltage
MB251D	MB251	110V	77V	110V

### MB-35D



### Electrical Characteristics @ 25°C Unless Otherwise Specified

Average Forward Current	$I_{F(AV)}$	25.0A	$T_C = 55^\circ\text{C}$
Peak Forward Surge Current	$I_{FSM}$	300A	8.3ms, half sine
Maximum Forward Voltage Drop Per Element	$V_F$	2.1V	$I_{FM} = 12.5\text{A}$ per element; $T_J = 25^\circ\text{C}$
Maximum DC Reverse Current At Rated DC Blocking Voltage	$I_R$	2 $\mu\text{A}$	$T_J = 25^\circ\text{C}$

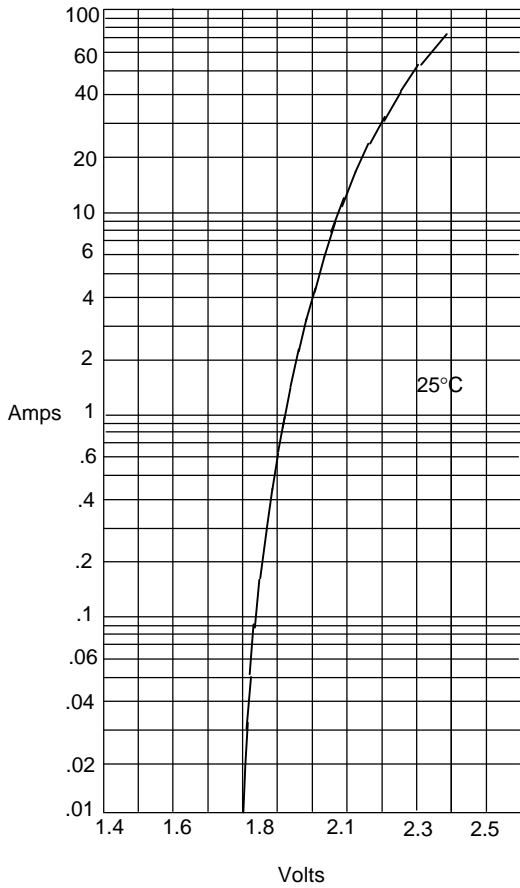
\*Pulse test: Pulse width 300  $\mu\text{sec}$ , Duty cycle 1%

DIM	INCHES		MM		NOTE
	MIN	MAX	MIN	MAX	
A	----	1.142	----	29.00	
B	----	.453	----	11.50	
C	.425	.480	10.80	12.20	
D	.691	.732	17.54	18.60	
G	.188	----	4.77	----	
J	.543	.583	13.80	14.80	

# MB251D

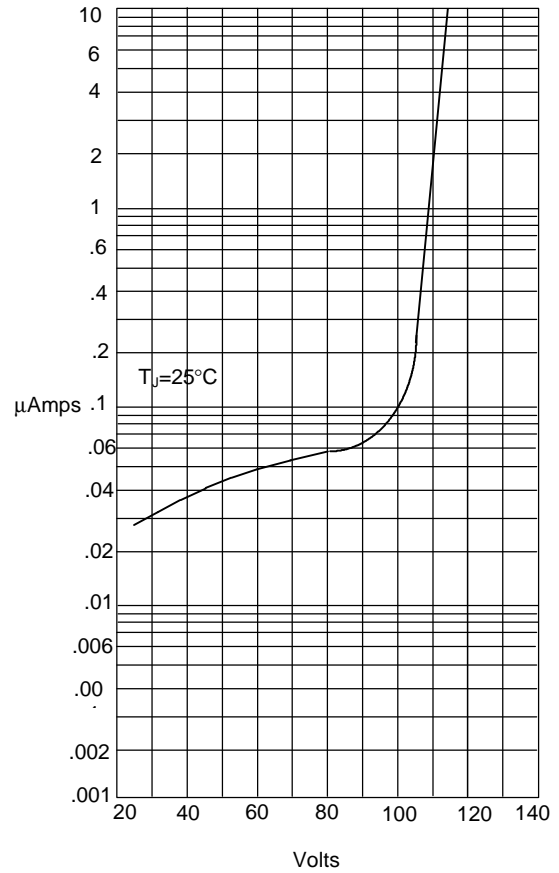


Figure 1  
Typical Forward Characteristics



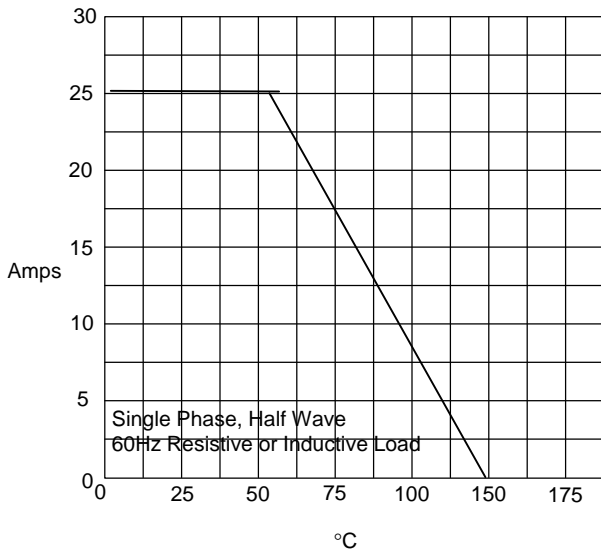
Instantaneous Forward Current - Amperes *versus*  
Instantaneous Forward Voltage - Volts

Figure 2  
Typical Reverse Characteristics



Instantaneous Reverse Leakage Current - MicroAmperes *versus*  
Percent Of Rated Peak Reverse Voltage - Volts

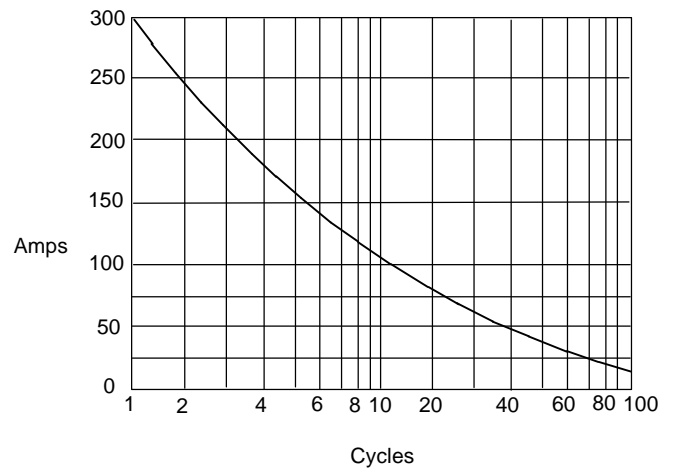
Figure 3  
Forward Derating Curve



Single Phase, Half Wave  
60Hz Resistive or Inductive Load

Average Forward Rectified Current - Amperes *versus*  
Case Temperature - °C

Figure 4  
Peak Forward Surge Current



Peak Forward Surge Current - Amperes *versus*  
Number Of Cycles At 60Hz - Cycles