

High IP3

# Active Mixer

## MAX-9H

Level 0 (LO Power +0 dBm) 810 to 930 MHz

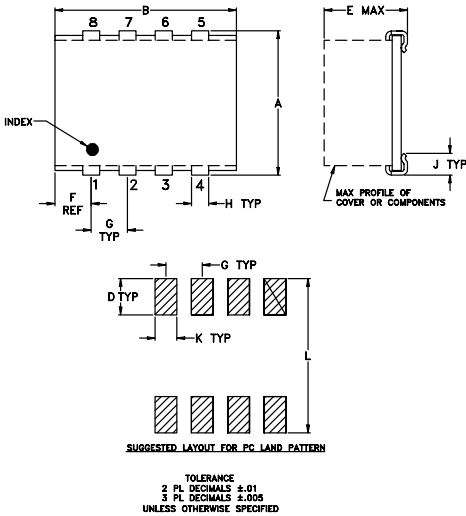
### Maximum Ratings

Operating Temperature	-40°C to 85°C
Storage Temperature	-55°C to 100°C
LO Power	10 dBm
RF Power	15 dBm
DC Voltage	+5.5V

### Pin Connections

LO	1
RF	3
IF	5
DC	7
GROUND	2,4,6,8

### Outline Drawing



### Outline Dimensions (inch/mm)

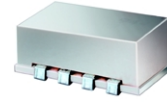
A	B	C	D	E	F	G
.395	.520	--	.100	.230	.110	.100
10.03	13.21	--	2.54	5.84	2.79	2.54
H	J	K	L			wt
.047	.065	.065	.425			grams
1.19	1.65	1.65	10.80			0.85

### Features

- low LO power, 0 dBm
- gain, 9 dB typ.
- output IP3, 33 dBm typ.
- noise figure, 9 dB typ.
- patent pending

### Applications

- GSM
- DCS/PCS



CASE STYLE: BJ937  
PRICE: \$19.95 ea. QTY (10)

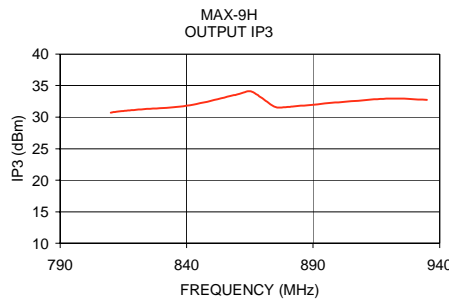
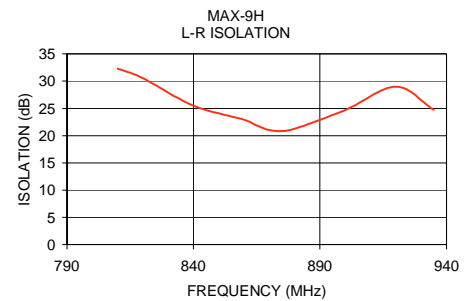
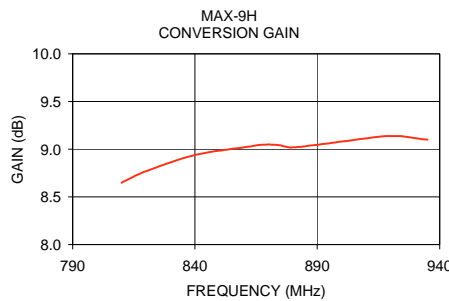
### Electrical Specifications (T<sub>AMB</sub>=25°C)

FREQUENCY (MHz)			OUTPUT IP3 (dBm)	RF INPUT @ 1dB compr. (dBm)	CONVERSION GAIN (dB)		NOISE FIGURE (dB)	LO-RF ISOL. (dB)		LO-IF* ISOL. (dB)		DC POWER Current	
RF	LO	IF	Typ.		Min.	Max.	Max.	Typ.	Min.	Typ.	Min.	Nom.	Max.
810-930	570-675	240-260	33	8	8	11	11	22	10	2	—	5	165

\*LO to IF isolation is measured at input to LO internal amplifier and at output of internal IF amplifier.  
To improve rejection, select filter from LFCN or HFCN series.

### Typical Performance Data

Frequency		Conversion Gain (dB)	L-R Isolation (dB)	Output IP3 (dBm)
RF MHz	LO MHz			
810.00	563.00	8.65	32.33	30.73
820.00	573.00	8.77	30.54	31.17
840.00	593.00	8.94	25.49	31.81
860.00	613.00	9.02	22.92	33.59
865.00	618.00	9.04	21.85	34.12
870.00	623.00	9.05	21.01	32.97
875.00	628.00	9.04	20.84	31.60
880.00	633.00	9.02	21.27	31.61
900.00	653.00	9.08	24.70	32.34
920.00	673.00	9.14	28.99	32.93
935.00	688.00	9.10	24.71	32.73



### electrical schematic

