



# E-Series Surface Mount Mixer 1920-1980 MHz

## Features

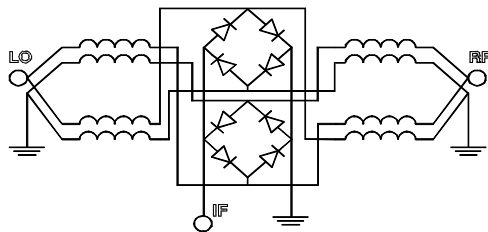
- LO Power +17 dBm
- Up to +14 dBm RF
- Surface Mount



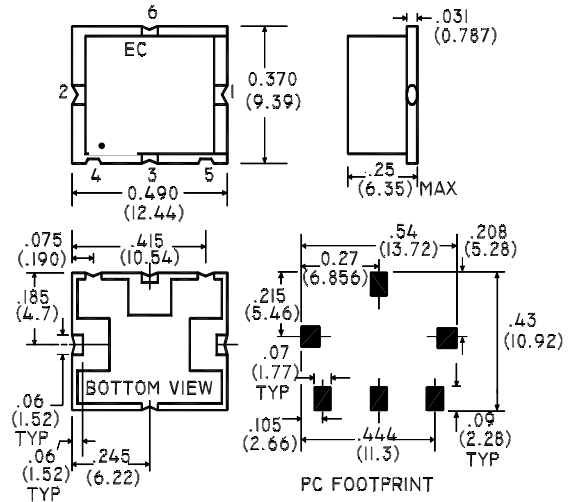
## Description

M/A-COM's MAMXES0005 is a Low Cost, Passive Double Double Balanced Mixer. Constructed using very broad band ferrite balun transformers and matched silicon schottky diodes, it's performance is especially suited to high dynamic range receivers. Given it's high 1dB compression point, the MAMXES0005 is also suitable for Transmitter upconversion at any frequency up to 2.0 GHz.

## Schematic



## SM-2 Package



Part Number	Packaging
MAMXES0005	Tube
MAMXES0005TR	Tape and Reel

## Electrical Specifications @ +25°C

Parameter	Units	Minimum	Typical	Maximum	Mean (x)	Sigma (σ)
Frequency Range	1920-1980MHz	—	—	—	—	—
IF 1.0 dB Bandwidth = DC - 1000 MHz	—	—	—	—	—	—
Conversion Loss	1920-1980MHz	—	—	9.5	—	—
L - R Isolation	1664-1724MHz	20.0	30.0	—	—	—
L - I Isolation	1664-1724MHz	20.0	30.0	—	—	—
Input IP3	1920-1980MHz	30.0	35.0	—	—	—

Test Conditions: LO Drive = +17dBm, IF frequency = 70MHz. Mean and Sigma calculated at 900MHz & 1800MHz.

S 1581 A



M/A-COM ■ North America: Tel. (800) 366-2266, Fax (800) 618-8883 ■ Asia/Pacific: Tel.+85 2 2111 8088, Fax +85 2 2111 8087 ■ Europe: Tel. +44 (1344) 869 595, Fax+44 (1344) 300 020

### Absolute Maximum Ratings

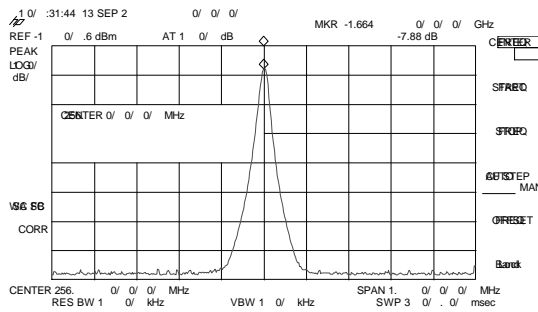
Parameter	Absolute Maximum
RF Input Power	+23dBm
LO Drive Power	+23 dBm
Operating/Storage Temperature	-40°C to +85°C

### Pin Configuration

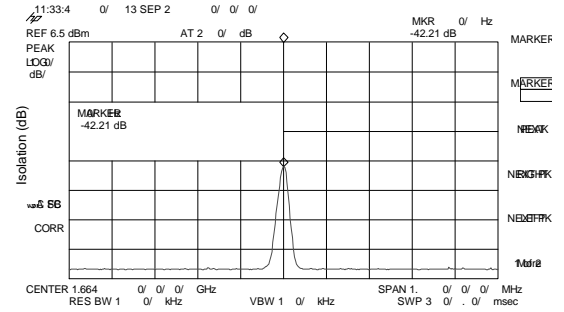
Function	Pin No.
RF	1
LO	2
IF	3
Ground	4,5,6

### Typical Performance @ +25°C

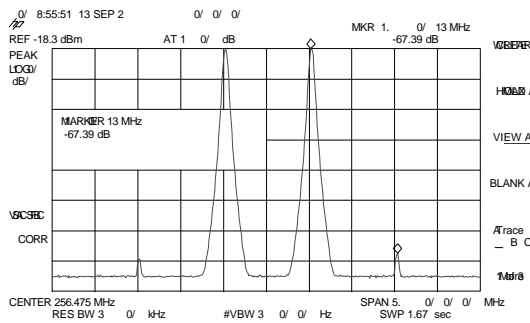
#### Conversion Loss



#### L-I Isolation



#### IIP3



#### L-R Isolation

