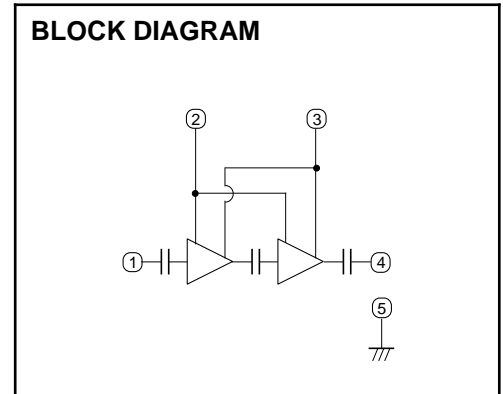
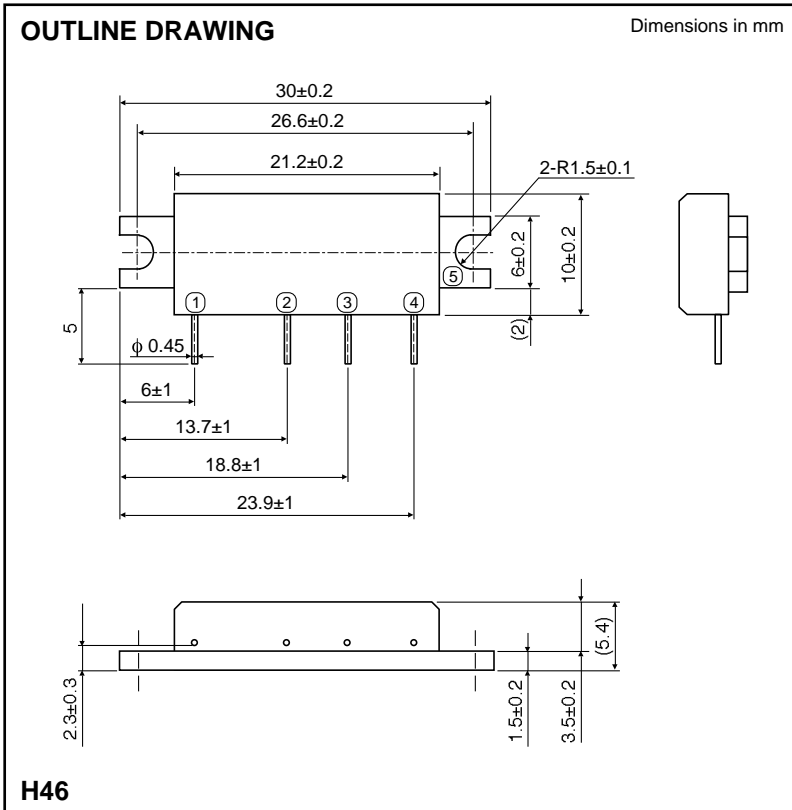


MITSUBISHI RF POWER MODULE
M67799UHA

SILICON MOS FET POWER AMPLIFIER, 470-490MHz, 7W, FM PORTABLE RADIO



- PIN:
 ① Pin : RF INPUT
 ② VGG : GATE BIAS SUPPLY
 ③ VDD : DRAIN BIAS SUPPLY
 ④ PO : RF OUTPUT
 ⑤ GND: FIN

ABSOLUTE MAXIMUM RATINGS (Tc=25°C unless otherwise noted)

Symbol	Parameter	Conditions	Ratings	Unit
VDD	Supply voltage	VGG 3.5V, ZG=ZL=50	16	V
VGG	Gate bias voltage		4	V
Pin	Input power	f=470-490MHz, ZG=ZL=50	30	mW
Po	Output power	f=470-490MHz, ZG=ZL=50	10	W
Tc (OP)	Operation case temperature	f=470-490MHz, ZG=ZL=50	-30 to +100	°C
Tstg	Storage temperature		-40 to +110	°C

Note. Above parameters are guaranteed independently.

ELECTRICAL CHARACTERISTICS (Tc=25°C, ZG=ZL=50 unless otherwise noted)

Symbol	Parameter	Test conditions	Limits		Unit
			Min	Max	
f	Frequency range		470	490	MHz
Po	Output power		7		W
T	Total efficiency	VDD=9.6V, VGG=3.5V, Pin=20mW	43		%
2fo	2nd. harmonic			-25	dBc
in	Input VSWR			4	-
-	Stability	ZG=50, VDD=4.8-13.2V, Load VSWR<4:1	No parasitic oscillation		-
-	Load VSWR tolerance	VDD=13.2V, Pin=20mW, PO=7W (VGG adjust), ZL=20:1	No degradation or destroy		-

Note. Above parameters, ratings, limits and test conditions are subject to change.