

## POWR-SAFE “Dead Front” Holders



Littelfuse POWR-SAFE “Dead Front” holders provide optimum protection to personnel. Indicating and non-indicating versions are available in 1, 2, 3, or 4 poles for Class CC and Midget fuses.

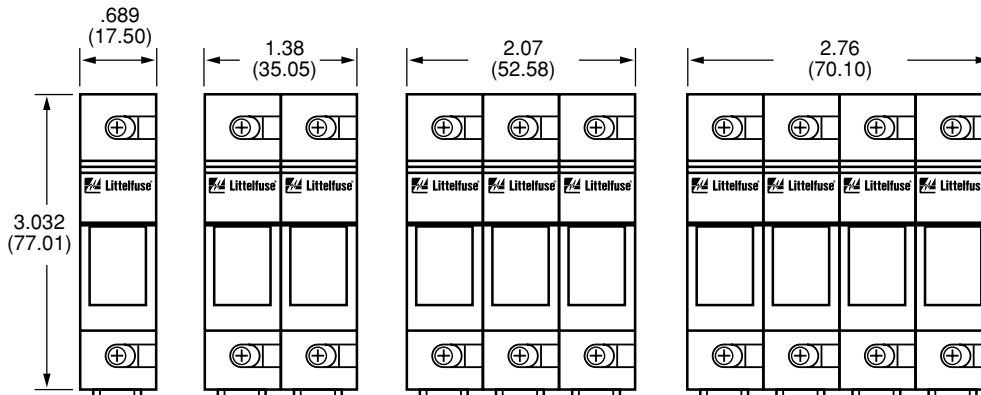
### FEATURES/BENEFITS

- Meets “Dead Front” requirements and IEC Type IP20 Protection
- Mountable on 35mm Din Rail
- Blown fuse identification (Indicating versions only)
- Easy installation and removal of fuses. No special fuse pullers or tools required.
- UL Listed for branch circuit protection (Class CC versions only)
- Compact design
- Ventilated design for cooler operation
- Indicates above 80 volts (ID versions only)



### DIMENSIONS in inches (mm in parentheses)

- LPSM/LPSC POWR-SAFE Holders



### SPECIFICATIONS

- Voltage Rating:** 600 Volts
- Ampere Rating:** 30 amperes
- Interrupting Rating:** 200 kA (Class CC)  
100 kA (Midget)
- Terminal type:** Pressure plate
- Suggested Torque:** 15 lb.
- Wire Range:** #6—#14CU
- Material:** Thermo-Plastic
- Flammability Rating:** 94VO
- Approvals:** UL Listed (LPSC File No: E14721)  
UL Recognized (LPSM File No: E14721)  
CSA Certified (LPSC/LPSM File No: LR7316)  
IEC Type IP20 Protection  
CE Certified

### ORDERING INFORMATION

Indicating Part Number	Non-Indicating Part Number	Fuse Type	Number of Poles
LPSC001ID	LPSC001	Class CC	1
LPSC002ID	LPSC002	Class CC	2
LPSC003ID	LPSC003	Class CC	3
LPSC004ID	LPSC004	Class CC	4
LPSM001ID	LPSM001	Midget	1
LPSM002ID	LPSM002	Midget	2
LPSM003ID	LPSM003	Midget	3
LPSM004ID	LPSM004	Midget	4

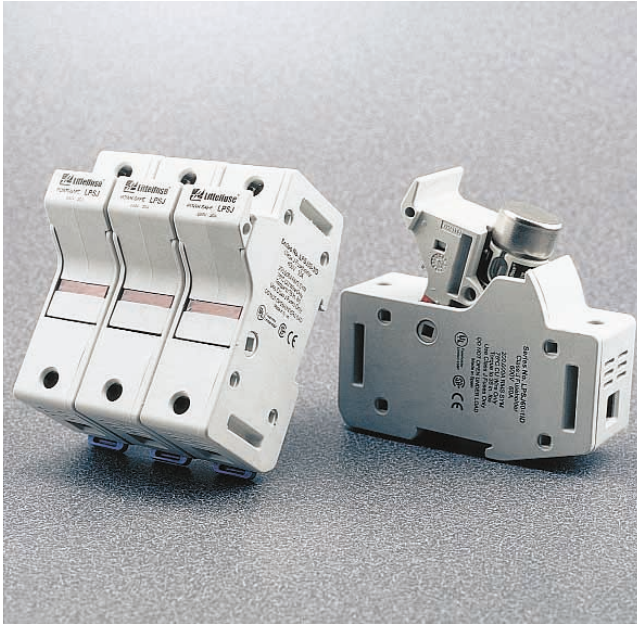
**Multi-pole Assembly Kit:** Order No: CYHP001  
(Kit contains 20 connector pincers and 10 handle pins.)

**NOTE:** Contact factory for DC rated versions.

# Fuse Blocks, Holders and Accessories

## Class J POWR-SAFE Holders

**NEW**



Littelfuse POWR-SAFE “Dead Front” fuseholders provide optimum protection to personnel. An integral DIN-Rail adapter system allows fuse holders to be mounted on 35mm DIN-Rail without the use of tools or special parts. Indicating and non-indicating versions are available in 1, 2, or 3 poles for Class J fuses.

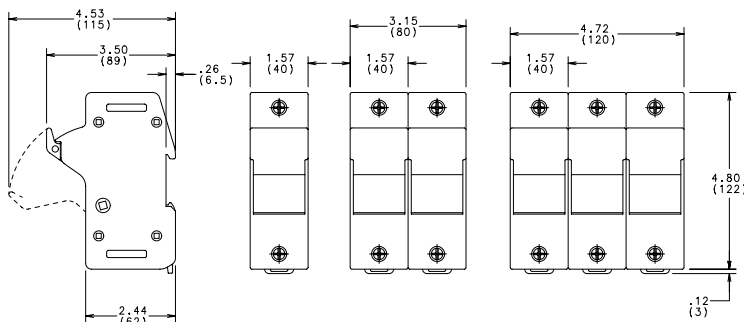
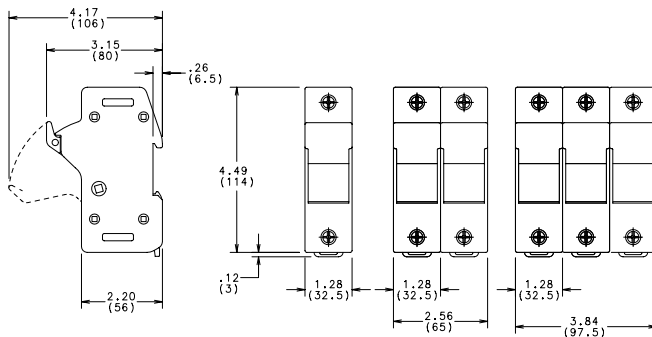
### SPECIFICATIONS

- Voltage Rating:** 600 VAC
- Interrupting Rating:** 200 kA
- Ampere Rating:** 30 and 60 amperes
- Terminal Type:** Pressure plate
- Suggested Torque:** 30A – 35 inch-pounds  
60A – 45 inch-pounds
- Wire Range:** #2 – #14CU
- Material:** Thermo-plastic
- Flammability Rating:** 94V0
- Approvals:** UL Listed  
CSA Certified  
IEC Type IP20 Protection  
CE

### FEATURES/BENEFITS

- Meets “Dead Front” requirements and IEC Type IP20 protection.
- Mountable on 35mm DIN-Rail.
- Blown fuse identification (Indicating versions only).
- Easy installation and removal of fuses. No special fuse pullers or tools required.
- UL listed for branch circuit protection.
- Ventilated design for cooler operation.

### DIMENSIONS in inches (mm in parentheses)



### ORDERING INFORMATION

Littelfuse Catalog No.	Littelfuse System No.	No. of Poles	Pack Qty.	Voltage Rating	Ampere Rating	Options
LPSJ30-1	LPSJ301.Z	1	6	600V	30A	–
LPSJ30-2	LPSJ302.Z	2	3	600V	30A	–
LPSJ30-3	LPSJ303.Z	3	2	600V	30A	–
LPSJ30-1ID	LPSJ301.ZXID	1	6	600V	30A	Indicating
LPSJ30-2ID	LPSJ302.ZXID	2	3	600V	30A	Indicating
LPSJ30-3ID	LPSJ303.ZXID	3	2	600V	30A	Indicating
LPSJ60-1	LPSJ601.Z	1	6	600V	60A	–
LPSJ60-2	LPSJ602.Z	2	3	600V	60A	–
LPSJ60-3	LPSJ603.Z	3	2	600V	60A	–
LPSJ60-1ID	LPSJ601.ZXID	1	6	600V	60A	Indicating
LPSJ60-2ID	LPSJ602.ZXID	2	3	600V	60A	Indicating
LPSJ60-3ID	LPSJ603.ZXID	3	2	600V	60A	Indicating

Blocks And Holders

