

# Ceramic Low Pass Filter

DC to 5400 MHz

**NEW!**  
**LFTC-5400**

## Maximum Ratings

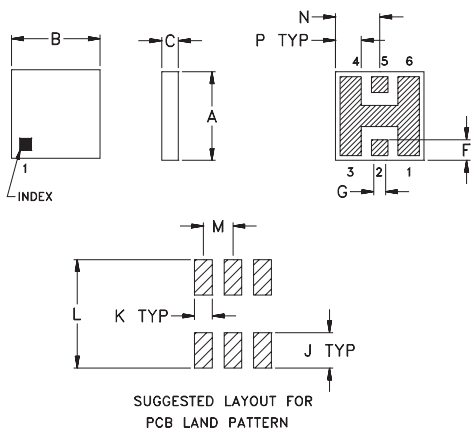
Operating Temperature	-55°C to 100°C
Storage Temperature	-55°C to 125°C

## Pin Connections

RF IN	2**
RF OUT	5**
GROUND	1,3,4,6

\*\* RF IN & RF OUT can be interchanged

## Outline Drawing

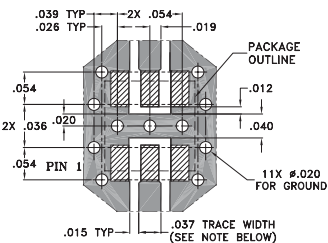


TOLERANCE UNLESS OTHERWISE STATED  
2 PLACES DECIMAL: ±.01  
3 PLACES DECIMAL: ±.005

## Outline Dimensions (inch)

A	B	C	D	E	F	G	H	J	K	L	M	N	P	wt.
.150	.150	.028	—	—	.035	.028	—	.060	.030	.184	.050	.075	.044	grams
3.81	3.81	0.71	—	—	0.89	0.71	—	1.52	0.76	4.67	1.27	1.91	1.12	0.15

## Demo Board MCL P/N: TB-233 Suggested PCB Layout (PL-112)



NOTE: TRACE WIDTH IS SHOWN FOR ROGERS RO4350 WITH DIELECTRIC THICKNESS .020" ± .0015".  
COPPER: 1/2 OZ. EACH SIDE.  
FOR OTHER MATERIALS TRACE WIDTH MAY NEED TO BE MODIFIED.

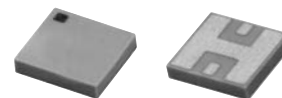
■ DENOTES PCB COPPER LAYOUT  
▨ DENOTES COPPER LAND PATTERN FREE OF SOLDERMASK

## Features

- miniature size, 0.15"X0.15"X.028"
- low profile, .028" height
- high power handling, 19W

## Applications

- harmonic rejection
- internal rejection
- receivers & transmitters



**BLUE CELL™**

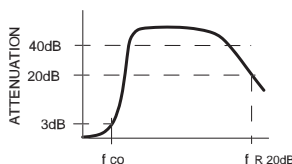
CASE STYLE: FR933  
PRICE: \$3.75 ea. QTY (10-49)

## Low Pass Filter Electrical Specifications (T<sub>AMB</sub>=25°C)

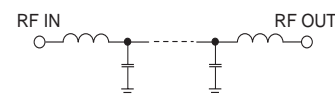
MODEL NO.	PASSBAND (MHz) (loss < 1 dB) Typ.	f <sub>co</sub> , MHz Nom. (loss 3 dB) Typ.	STOP BAND (MHz) ( > 20 dB ) ( loss > 40 dB ) fr20dB Typ.	VSWR (:1) Passband Typ.	POWER INPUT* (W)	MARKING	NO. OF SECTIONS
LFTC-5400	DC-5400	6410	9000-11000 — 12000	1.1	19	LF5	7

\* Derate linearly to 8W at 100°C ambient

## typical frequency response



## schematic



## Typical Performance Data at 25°C

Frequency (MHz)	Insertion Loss (dB)	VSWR (:1)
100.00	0.07	1.02
1000.00	0.21	1.02
5400.00	0.88	1.18
6410.00	2.69	2.76
7000.00	8.27	8.99
8200.00	24.11	21.73
11000.00	30.45	20.45
12000.00	29.61	22.87
13000.00	30.32	19.76
15000.00	19.81	11.03

