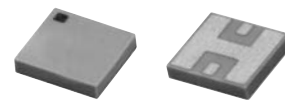


# Ceramic Low Pass Filter

DC to 2000 MHz

**NEW!**  
**LFTC-2000**



**BLUE CELL™**

CASE STYLE: FR933  
PRICE: \$3.75 ea. QTY (10-49)

## Maximum Ratings

Operating Temperature	-55°C to 100°C
Storage Temperature	-55°C to 125°C

## Pin Connections

RF IN	2**
RF OUT	5**
GROUND	1,3,4,6

\*\* RF IN & RF OUT can be interchanged

## Features

- miniature size, 0.15"X0.15"X.028"
- low profile, .028" height
- high power handling, 10W

## Applications

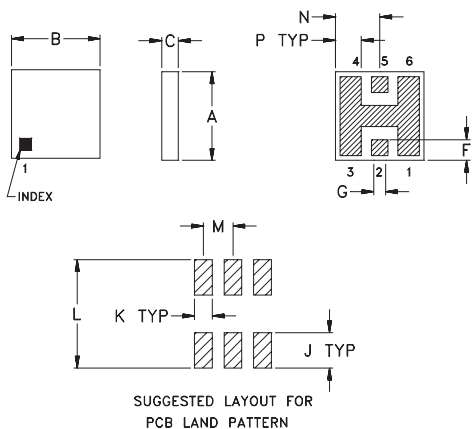
- harmonic rejection
- internal rejection
- receivers & transmitters

## Low Pass Filter Electrical Specifications (T<sub>AMB</sub>=25°C)

MODEL NO.	PASSBAND (MHz) (loss < 1 dB) Typ.	f <sub>co</sub> , MHz Nom. (loss 3 dB) Typ.	STOP BAND (MHz)		VSWR (:1) Passband Typ.	POWER INPUT* (W)	MARKING	NO. OF SECTIONS
			(> 20 dB)	(loss > 40 dB)				
LFTC-2000	DC-2000	2430	3450	4500-5500	8000	10	LF8	7

\* Derate linearly to 4W at 100°C ambient

## Outline Drawing

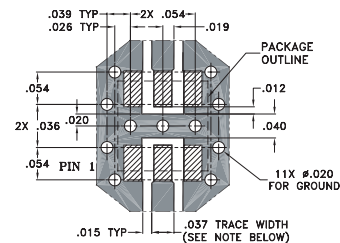


TOLERANCE UNLESS OTHERWISE STATED  
2 PLACES DECIMAL: ±.01  
3 PLACES DECIMAL: ±.005

## Outline Dimensions (inch)

A	B	C	D	E	F	G	H	J	K	L	M	N	P	wt. grams
.150	.150	.028	—	—	.035	.028	—	.060	.030	.184	.050	.075	.044	0.15
3.81	3.81	0.71	—	—	0.89	0.71	—	1.52	0.76	4.67	1.27	1.91	1.12	

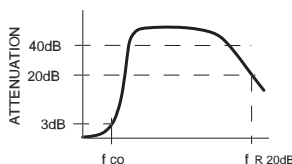
## Demo Board MCL P/N: TB-233 Suggested PCB Layout (PL-112)



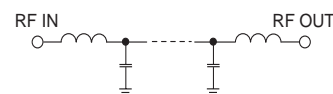
NOTE: TRACE WIDTH IS SHOWN FOR ROGERS RO4350 WITH DIELECTRIC THICKNESS .020" ± .0015".  
COPPER: 1/2 OZ. EACH SIDE.  
FOR OTHER MATERIALS TRACE WIDTH MAY NEED TO BE MODIFIED.

- DENOTES PCB COPPER LAYOUT
- ▨ DENOTES COPPER LAND PATTERN FREE OF SOLDERMASK

## typical frequency response



## schematic



## Typical Performance Data at 25°C

Frequency (MHz)	Insertion Loss (dB)	VSWR (:1)
1.00	0.04	1.01
1000.00	0.39	1.22
1500.00	0.53	1.17
2000.00	0.77	1.13
2430.00	2.98	3.23
3000.00	15.33	23.65
3500.00	25.15	36.03
4000.00	33.38	38.95
4600.00	46.96	43.22
5000.00	64.27	44.76
6000.00	38.59	45.25
7000.00	29.45	31.94
8000.00	21.74	19.74
9000.00	26.73	12.84

