

# Ceramic Low Pass Filter

DC to 2500 MHz

**NEW!**  
**LFCN-2500**



**BLUE CELL™**

CASE STYLE: FV1206

Model	Price	Qty.
LFCN-2500	\$1.99	(10-49)
LFCN-2500D	\$2.49	(10-49)

## Maximum Ratings

Operating Temperature	-55°C to 100°C
Storage Temperature	-55°C to 100°C
RF Power Input*	10W max. at 25°C
DC Current Input to Output	0.5A max. at 25°C

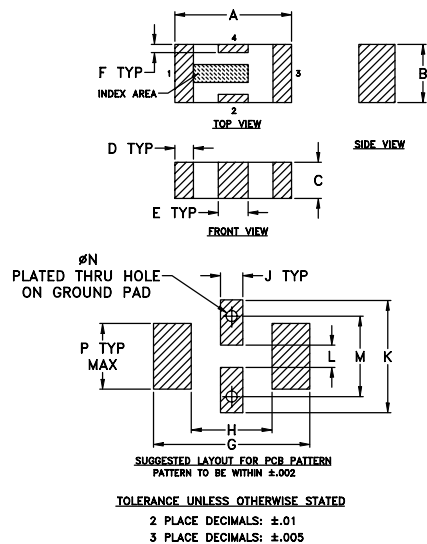
\*Passband rating, derate linearly to 3.5W at 100°C ambient.

## Pin Connections

RF IN	1**
RF OUT	3**
GROUND	2,4

\*\*RF IN & RF OUT can be interchanged

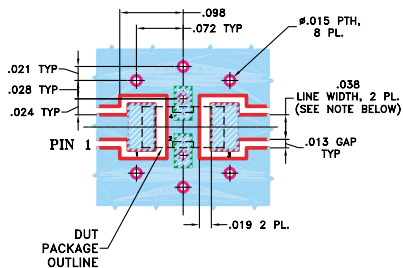
## Outline Drawing



## Outline Dimensions (inch/mm)

A	B	C	D	E	F	G	H	J	K	L	M	N	P	wt
.126	.063	.037	.020	.032	.009	.169	.087	.024	.122	.024	.087	.012	.071	grams
3.20	1.60	0.94	0.51	0.81	0.23	4.29	2.21	0.61	3.10	0.61	2.21	0.30	1.80	.020

**Demo Board MCL P/N: TB-270**  
**Suggested PCB Layout (PL-137)**



- 1. TRACE WIDTH IS SHOWN FOR ROGERS RO4350 WITH DIELECTRIC THICKNESS .020" ± .0015". COPPER: 1/2 OZ. EACH SIDE. FOR OTHER MATERIALS TRACE WIDTH MAY NEED TO BE MODIFIED. 2. BOTTOM SIDE OF THE PCB IS CONTINUOUS GROUND PLANE.
- DENOTES PCB COPPER LAYOUT
- DENOTES COPPER LAND PATTERN FREE OF SOLDERMASK

## Features

- excellent power handling, 10W
- small size
- 7 sections
- temperature stable
- patent pending

## Applications

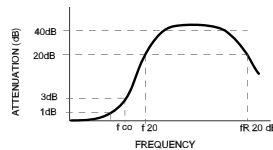
- harmonic rejection
- VHF/UHF transmitters/receivers
- lab use

## Low Pass Filter Electrical Specifications<sup>1</sup> (T<sub>AMB</sub>=25°C)

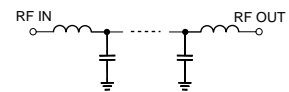
MODEL NO.	PASSBAND (MHz) (loss < 1 dB) Max.	f <sub>co</sub> , MHz Nom. (loss 3 dB) Typ.	STOP BAND (MHz) (loss, dB)			VSWR (:1)		NO. OF SECTIONS
			f 20 Min.	30 Typ.	f <sub>r</sub> 20 Typ.	Stopband Typ.	Passband Typ.	
LFCN-2500	DC-2500	3075	3675	3800-6100	8000	20	1.2	7

1. For Applications requiring DC voltage to be applied to the Input or output, use LFCN-2500D (DC Resistance to ground is 100 Mohms min.)

## typical frequency response

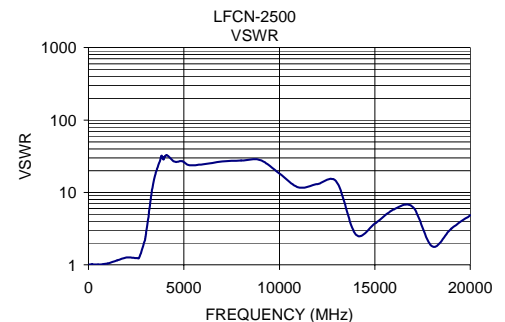
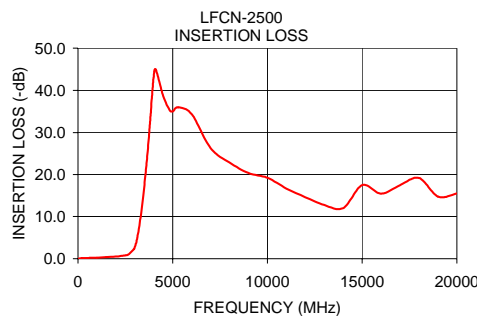


## schematic



## Typical Performance Data at 25°C

Frequency (MHz)	Insertion Loss (dB)	VSWR (:1)
50	0.05	1.02
2000	0.50	1.26
2530	0.80	1.24
3000	2.72	2.58
3660	24.30	23.81
3760	29.63	28.03
4000	43.19	31.03
5000	34.98	26.33
6000	34.38	24.48
7000	26.29	26.74
8000	22.85	27.59
10000	19.22	18.30
12000	14.60	13.09
15000	17.48	3.73
20000	15.48	4.84



**Mini-Circuits®**

Distribution Centers NORTH AMERICA 800-654-7949 • 417-335-5935 • Fax 417-335-5945 • EUROPE 44-1252-832600 • Fax 44-1252-837010

Mini-Circuits ISO 9001 & ISO 14001 Certified

INTERNET <http://www.minicircuits.com>

P.O. Box 350166, Brooklyn, New York 11235-0003 (718) 934-4500 Fax (718) 332-4661

REV. B  
M96263  
LFCN-2500  
EDR-6783/2  
RVN/AD/CP  
050113