



WBFBP-06C Plastic-Encapsulate Diode

FMMBD4448HTW

SURFACE MOUNT SWITCHING DIODE ARRAYS

DESCRIPTION

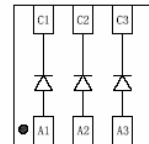
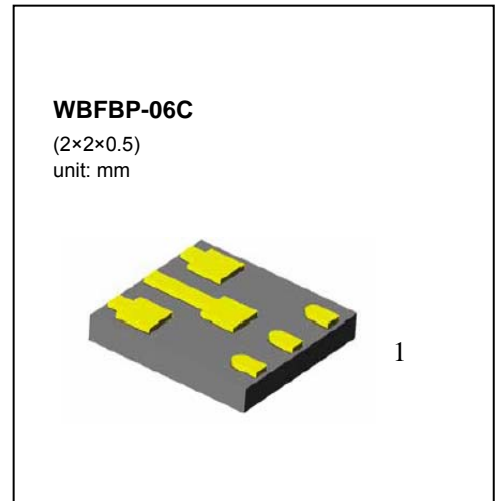
Silicon epitaxial planar
Switching Diode

FEATURES

- Ultra-Small Surface Mount Package
- Fast Switching Speed
- High Conductance

APPLICATION

For General Purpose Switching Applications, rectifiers
For portable equipment:(i.e. Mobile phone,MP3, MD,CD-ROM,
DVD-ROM, Note book PC, etc.)



FMMBD4448HTW
Marking:KAA

Maximum Ratings and Electrical Characteristics, Single Diode @ $T_A=25$

Parameter	Symbol	Limits	Unit
Non-Repetitive Peak reverse voltage	V_{RM}	100	V
Peak Repetitive peak reverse voltage	V_{RRM}	80	V
Working Peak Reverse Voltage	V_{RWM}		
DC Blocking Voltage	V_R		
RMS Reverse Voltage	$V_{R(RMS)}$	57	V
Forward Continuous Current	I_{FM}	500	mA
Average Rectified Output Current	I_O	250	mA
Non-Repetitive Peak forward surge current @=1.0 μ s @=1.0s	I_{FSM}	4.0 2.0	A
Power Dissipation	P_d	150	mW
Thermal Resistance Junction to Ambient	$R_{\theta JA}$	625	$^{\circ}C/W$
Junction temperature	T_J	150	$^{\circ}C$
Storage temperature range	T_{STG}	-65 to +150	$^{\circ}C$

Electrical Ratings @ $T_A=25^{\circ}C$

Parameter	Symbol	Min.	Typ.	Max.	Unit	Conditions
Reverse Breakdown Voltage	V_R	80			V	$I_R=100 \mu A$
Forward voltage	V_{F1}	0.62		0.72	V	$I_F=5mA$
	V_{F2}			0.855	V	$I_F=10mA$
	V_{F3}			1.0	V	$I_F=100mA$
	V_{F4}			1.25	V	$I_F=150mA$
Reverse current	I_{R1}			0.1	μA	$V_R=70V$
	I_{R2}			25	nA	$V_R=20V$
Capacitance between terminals	C_T			3.5	pF	$V_R=6V, f=1MHz$
Reverse Recovery Time	t_{rr}			4	ns	$V_R=6V, I_F=5mA$

Typical Characteristics

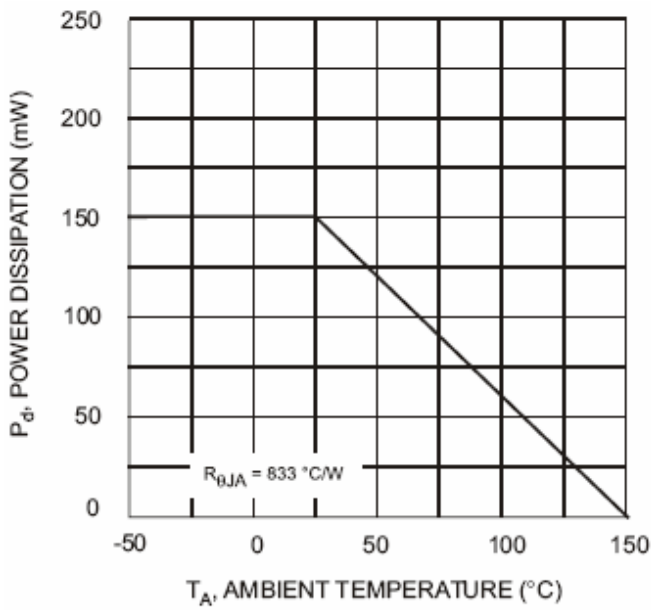


Fig. 1, Derating Curve - Total

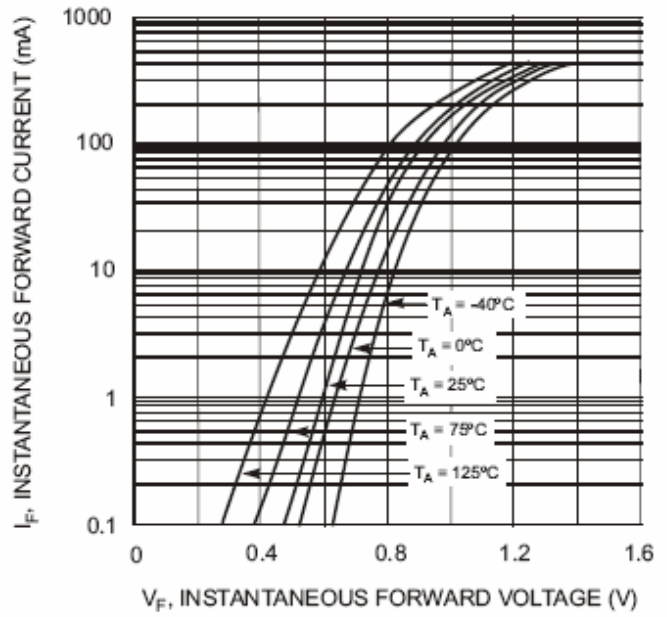


Fig. 2 Typical Forward Characteristics

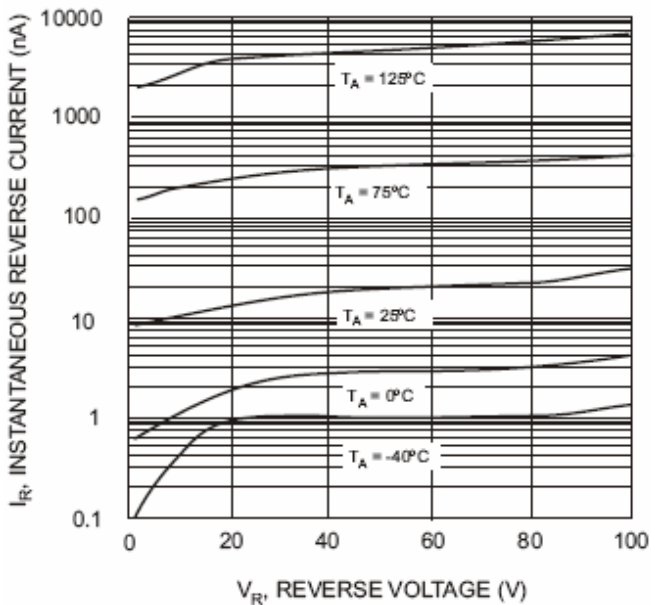


Fig. 3 Typical Reverse Characteristics

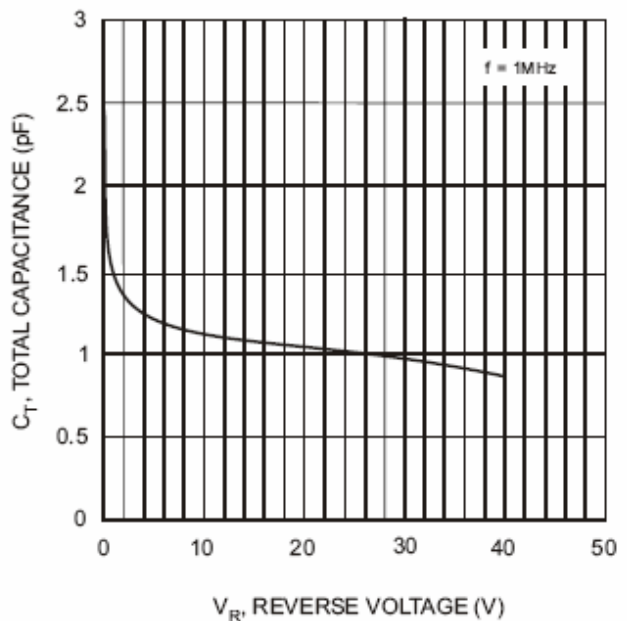
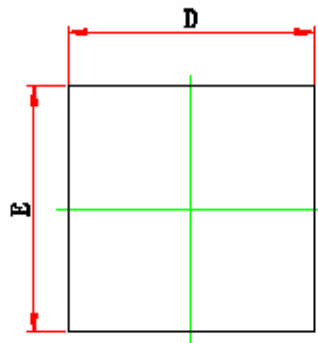


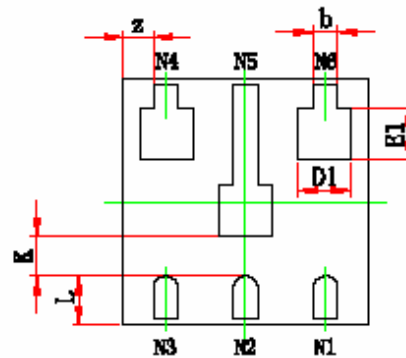
Fig. 4 Typical Capacitance vs. Reverse Voltage



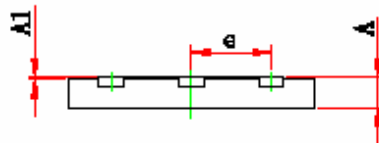
WBFBP-06C(2×2×0.5) PACKAGE OUTLINE DIMENSIONS



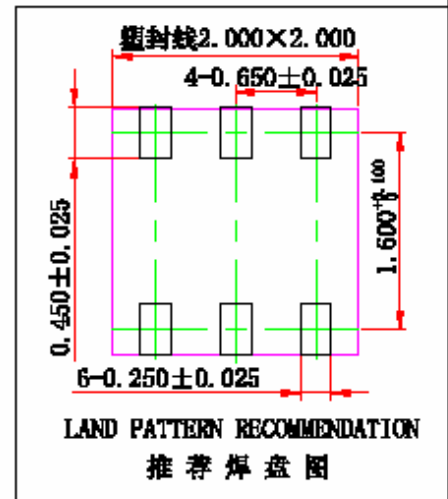
TOP VIEW



BOTTOM VIEW

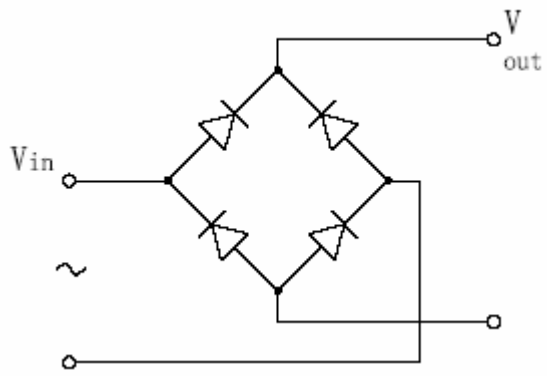


SIDE VIEW



Symbol	Dimensions in Millimeters		Dimensions in Inches	
	Min.	Max.	Min.	Max.
A	0.450	0.550	0.018	0.022
A1	0.000	0.100	0.000	0.004
b	0.150	0.250	0.006	0.010
D	1.900	2.100	0.075	0.083
E	1.900	2.100	0.075	0.083
D1	0.420 REF.		0.017 REF.	
E1	0.420 REF.		0.017 REF.	
e	0.650 TYP.		0.026 TYP.	
L	0.400 REF.		0.016 REF.	
k	0.300 REF.		0.012 REF.	
z	0.500 REF.		0.020 REF.	

APPLICATION CIRCUITS



Bridge rectifiers