

# FLNR\_ID/FLSR\_ID Indicator™ Class RK5 Fuses

250/600 VAC ■ Dual-Element, Time Delay ■ 1/10 – 600 Amperes



Littelfuse FLNR\_ID/FLSR\_ID Indicator™ fuses provide visual blown fuse indication at a glance. The patented state-of-the-art solid state design provides maximum reliability and superior performance characteristics in a true dual-element design. The use of Indicator™ fuses reduces down-time, nuisance opening, increases safety, and can save thousands of dollars in lost production time.

## APPLICATIONS

- Service entrance switches
- Switchboard main and feeder switches
- Motor control center mains and motor branch circuits
- Individual fused combination motor controllers
- Distribution panelboards
- Industrial control panels
- Protection of fully-rated panelboards and loadcenters
- All general purpose circuits

## FEATURES/BENEFITS

- **Reduce Down-Time** — A glance at the indicating window of a FLNR\_ID or FLSR\_ID Indicator™ fuse pinpoints open fuses immediately. If the window is dark, the fuse has opened. It's that simple. No fuse testing required. Machine operators can immediately determine that there is an open fuse and request maintenance personnel to bring the proper replacement.
- **Reduce Nuisance Opening** — FLNR\_ID and FLSR\_ID Indicator™ fuses have superior time-delay and cycling characteristics which can lengthen fuse life and decrease needless opening.
- **Reduce Fuse Inventory** — Because FLNR\_ID and FLSR\_ID Indicator™ fuses have superior performance characteristics they can be used on a variety of applications, thus decreasing fuse inventory.

## SPECIFICATIONS

**Voltage Ratings:** AC: 250 Volts (FLNR\_ID);  
600 Volts (FLSR\_ID)  
DC: 125 Volts (FLNR 1/10 – 30A);  
125 Volts (FLNR\_ID 35 – 600A);  
300 Volts (FLSR\_ID)

**Interrupting Ratings:** AC: 200,000 amperes rms  
symmetrical  
300,000 amperes rms  
symmetrical  
(Littelfuse self-certified)  
DC: 20,000 amperes

**Ampere Range:** 1/10 – 600 amperes

**Approvals:** Standard 248-12, Class RK5  
UL Listed (File No: E81895)  
CSA Certified (File No: LR29862)  
MSHA 300 Volt Listing (FLSR\_ID)  
QPL: Federal Specification WF-1814

## AMPERE RATINGS

1/10**	1/100	1/40	4	8	30	80	225
1/8	1/100	2	4½	9	35	90	250
15/100	1	2¼	5	10	40	100	300
2/10	1½	2½	5½	12	45	110	350
¼	1¼	2¾	6	15	50	125	400
3/10	1¼	3	6¼	17½	60	150	450
¼	1½	3¾	7	20	70	175	500
½	1¾	4½	7½	25	75	200	600

\*\*FLNR only

NOTE: For 1/10 – 30 ampere 250 volt fuses, order non-indicating FLNR series fuses.

NOTE: All FLNR\_ID fuses rated 35 – 600A are Indicator fuses.

NOTE: All FLSR\_ID fuses rated 1 amp and above are Indicator fuses.

Example part number (series & amperage): FLSR100ID

## RECOMMENDED FUSE BLOCKS

- LR250 series (for FLNR\_ID series fuses)
- LR600 series (for FLSR\_ID series fuses)

Refer to Fuse Block section of this catalog for additional information.

- **Reduce Equipment Damage** — FLNR\_ID and FLSR\_ID Indicator™ fuses have superior overload and short circuit protection which can reduce equipment damage.
- **Reduce Accidents** — The FLNR\_ID and FLSR\_ID Indicator™ fuses improve safety by minimizing exposure to live circuits. Unlike other forms of blown fuse indication, Indicator™ fuses provide built-in blown fuse indication with the power on or off. No second guessing whether a light means a good or bad fuse and no current going across a blown fuse to power a lighted accessory.

# FLNR\_ID/FLSR\_ID Indicator™ Class RK5 Fuses

250/600 VAC ■ Dual-Element, Time Delay ■ 1/10 – 600 Amperes

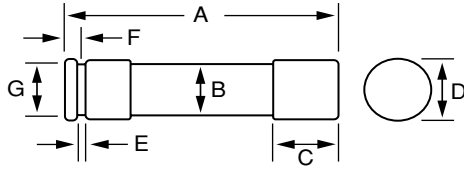


FIG. 1

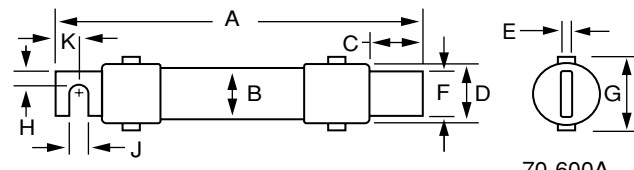
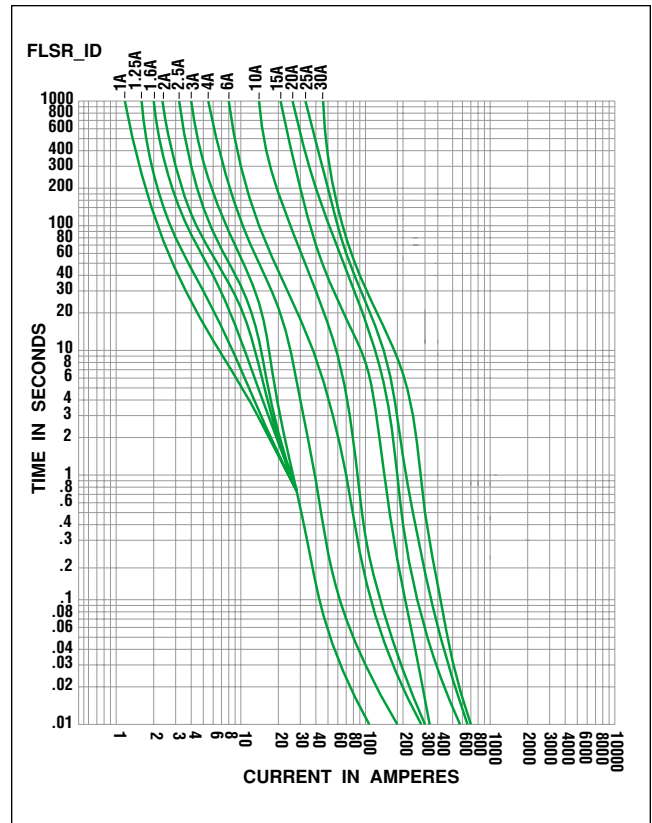
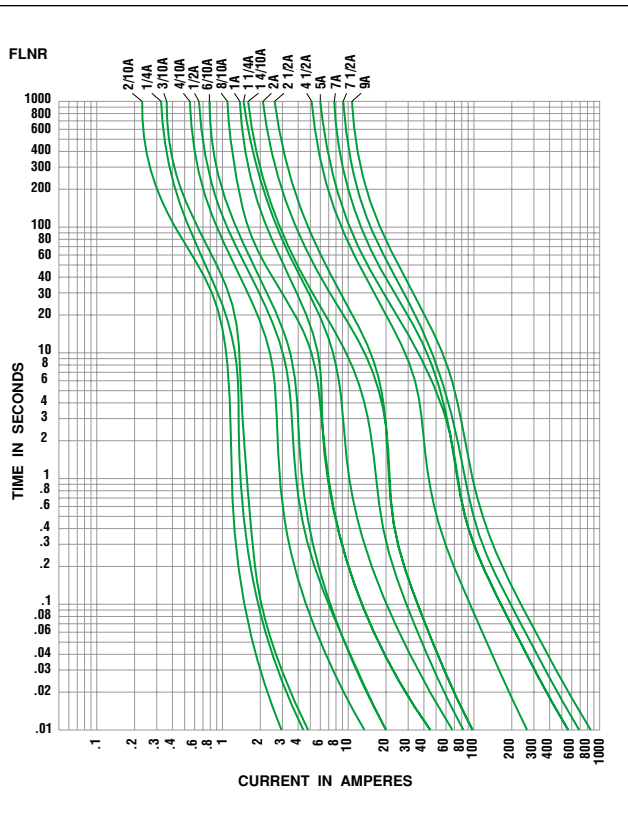


FIG. 2

70-600A

AMPERES	REFER TO FIG. NO.	SERIES	DIMENSIONS IN INCHES (mm in parentheses)									
			A	B	C	D	E	F	G	H	J	K
1/10 – 30	1	FLNR	2 (50.8)	1/2 (12.7)	1/2 (12.7)	9/16 (14.3)	5/64 (2.0)	5/32 (4.0)	3/8 (9.5)	—	—	—
		FLSR_ID	5 (127.0)	3/4 (19.1)	5/8 (15.9)	13/16 (20.6)	3/32 (2.4)	3/16 (4.8)	5/8 (15.9)	—	—	—
35 – 60	1	FLNR_ID	3 (76.2)	3/4 (19.1)	5/8 (15.9)	13/16 (20.6)	3/32 (2.4)	3/16 (4.8)	5/8 (15.9)	—	—	—
		FLSR_ID	5-1/2 (139.7)	1 (25.4)	5/8 (15.9)	1-1/16 (27.0)	3/32 (2.4)	1/4 (6.4)	7/8 (22.2)	—	—	—
70 – 100	2	FLNR_ID	5-7/8 (149.2)	1 (25.4)	1-1/16 (27.0)	1-1/16 (27.0)	1/8 (3.2)	3/4 (19.1)	1-1/4 (31.8)	1/4 (6.4)	9/32 (7.1)	1/2 (12.7)
		FLSR_ID	7-7/8 (200.0)	1-1/4 (31.8)	1-1/16 (27.0)	1-5/16 (33.3)	1/8 (3.2)	3/4 (19.1)	1-1/2 (38.1)	1/4 (6.4)	9/32 (7.1)	1/2 (12.7)
110 – 200	2	FLNR_ID	7-1/8 (181.0)	1-1/2 (38.1)	1-15/32 (37.3)	1-19/32 (40.5)	3/16 (4.8)	1-1/8 (28.6)	1-27/32 (46.8)	7/16 (11.1)	9/32 (7.1)	11/16 (17.5)
		FLSR_ID	9-5/8 (244.5)	1-3/4 (44.5)	1-15/32 (37.3)	1-27/32 (46.8)	3/16 (4.8)	1-1/8 (28.6)	2-3/32 (53.2)	7/16 (11.1)	9/32 (7.1)	11/16 (17.5)
225 – 400	2	FLNR_ID	8-5/8 (219.1)	2 (50.8)	1-15/16 (49.2)	2-3/32 (53.2)	1/4 (6.4)	1-5/8 (41.3)	2-11/32 (59.5)	5/8 (15.9)	13/32 (10.3)	15/16 (23.8)
		FLSR_ID	11-5/8 (295.3)	2-1/2 (63.5)	2 (50.8)	2-19/32 (65.9)	1/4 (6.4)	1-5/8 (41.3)	2-27/32 (72.2)	5/8 (15.9)	13/32 (10.3)	15/16 (23.8)
450 – 600	2	FLNR_ID	10-3/8 (263.5)	2-1/2 (63.5)	2-3/8 (60.3)	2-19/32 (65.9)	1/4 (6.4)	2 (50.8)	2-27/32 (72.2)	3/4 (19.1)	17/32 (13.5)	1-1/8 (28.6)
		FLSR_ID	13-3/8 (339.7)	3 (76.2)	2-13/32 (61.1)	3-3/32 (78.6)	1/4 (6.4)	2 (50.8)	3-11/32 (84.93)	3/4 (19.1)	17/32 (13.5)	1-1/8 (28.6)

For additional application information request Product Bulletin EL-4



# FLNR\_ID/FLSR\_ID Indicator™ Class RK5 Fuses

250/600 VAC ■ Dual-Element, Time Delay ■ 1/10 – 600 Amperes

