

3.2mm SQUARE ISOLATOR

MODEL ESI-3EAR 1.880 G 01 - T

- (1) Series ESI-3EAR : 1.6mm Height
 - (2) Center Frequency
 - (3) G : GHz
 - (4) Control No.
 - (5) T : Taping
- Blank : Bulk

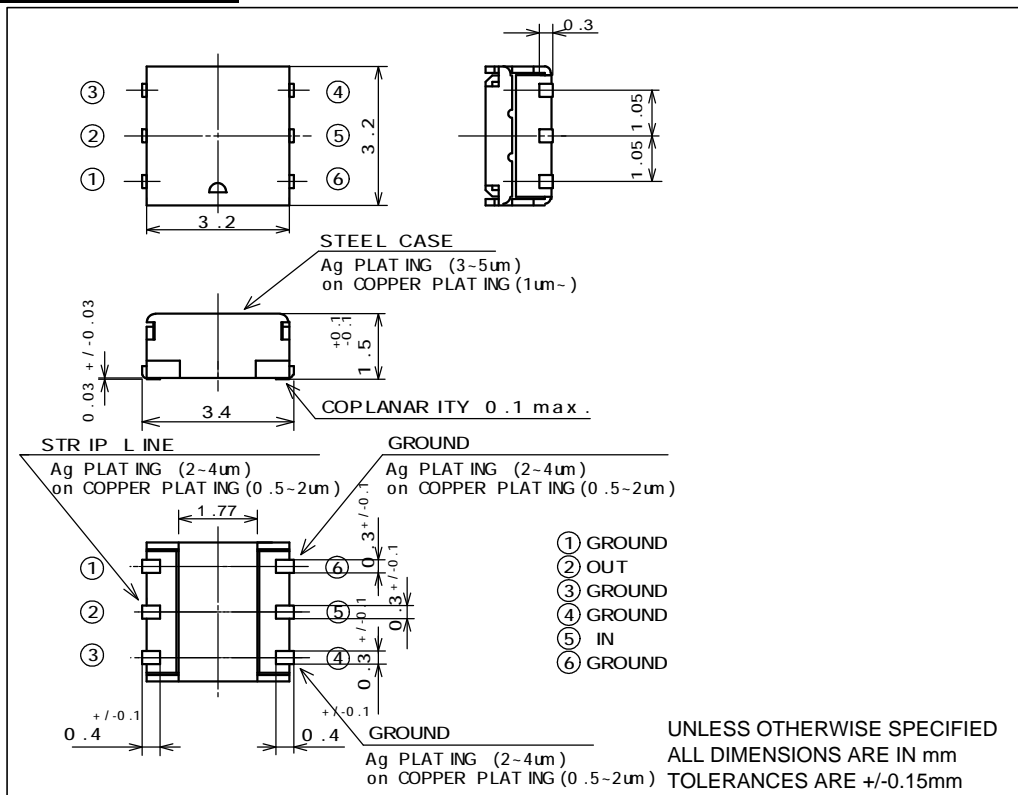
Target Specification

Frequency (GHz)	Ins. Loss Max. (dB)	Isolation Min. (dB)	V.S.W.R. (IN) Max.	V.S.W.R. (OUT) Max.	Attenuation		Handling Power Max. (W)	Reflection Power Max. (W)
					at 2f Min. (dB)	at 3f Min. (dB)		
1.850-1.910	[0.50] 0.60	13	1.50	1.50	15	15	2.5	0.6

Operating Temperature(deg.C) ; -35 to +85
Impedance ; 50 ohms Typ.

[]---Room temperature(deg.C) ; +20 to +30

Shape & Size



Hitachi Metals, Ltd. Tottori Works

TAE889-3