

## Features

- Thick film technology
- Fail safe
- Protection to ITU-T K.20

## Applications

- Analog Line Cards
- CPE (Customer Premises Equipment)
- DDS (Digital Data Systems)
- DLC (Digital Loop Carriers)
- T1/T3 Transmission Lines
- ISDN

# D22B Line Feed Resistors w/Resettable Polymer PTC & Overvoltage Protectors

### Product Characteristics

Resistor Tolerance .....±1 %  
 Polyswitches Matched to .....2.0 ohms  
 Rating .....250 V, 1.0 A  
 Trip Time @ 1 A .....1.1 seconds @ 20 °C  
 Trip Current .....125 mA @ 25 °C

### Environmental Characteristics

#### TESTS PER MIL-STD-202

Humidity .....103B  
 Solderability.....208D  
 Thermal Shock .....107B  
 Resistance to Solvents .....215  
 Resistance to Solder Heat .....210D  
 Flammability .....UL 94V-0  
 IEC 695-2-2

### Functional Characteristics

ITU-T K.20  
 Lightning Surge .....1 KV  
 Power Induction.....600 Vrms  
 Power Contact.....230 Vrms  
 UL 497A

### Physical Characteristics

Body Style .....Open Frame SIP  
 Body Material.....96% Alumina  
 Lead Frame Material.....Copper, solder coated  
 Standard Parts Available Off the Shelf .....20, 30, 50, 100 ohms

### How To Order

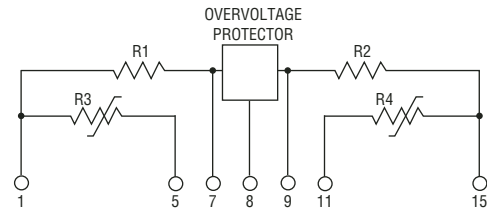
#### D22B 100AA

Model \_\_\_\_\_  
 (D22B = LFR w/Resettable Polymer PTC & Overvoltage Protectors)

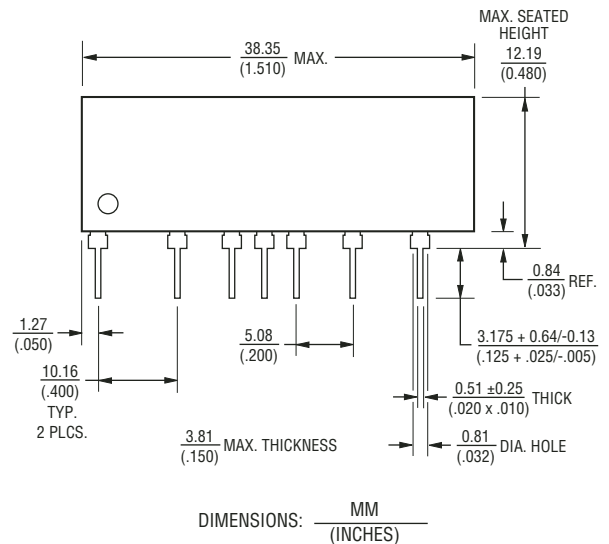
- Resistor Tolerance \_\_\_\_\_
- 020AA = 20 ohms
  - 030AA = 30 ohms
  - 050AA = 50 ohms
  - 100AA = 100 ohms

Custom values available; contact factory.

### Circuit Schematic



### Product Dimensions



Circuit Protection Division

#### Asia-Pacific:

Tel: +886-2 2562-4117  
 Fax: +886-2 2562-4116

#### Europe:

Tel: +41-41 768 5555  
 Fax: +41-41 768 5510

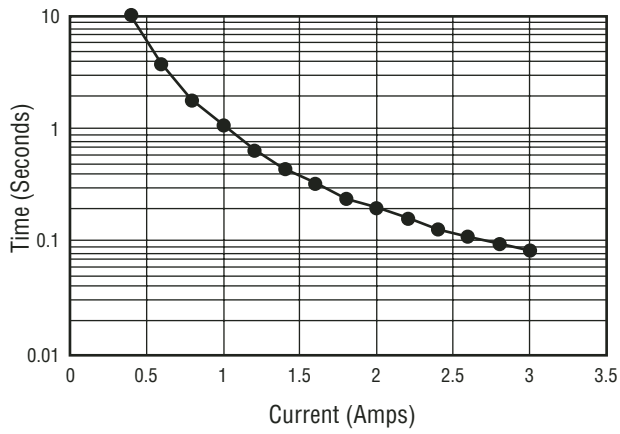
#### The Americas:

Tel: +1-951 781-5500  
 Fax: +1-951 781-5700

[www.bourns.com](http://www.bourns.com)

**Trip Characteristics**

**Time to Trip**



**Hold Current vs Temperature**

