



SOT-89 Encapsulate Three Terminal Voltage Regulator

CJ78L08 Three-terminal positive voltage regulator

FEATURES

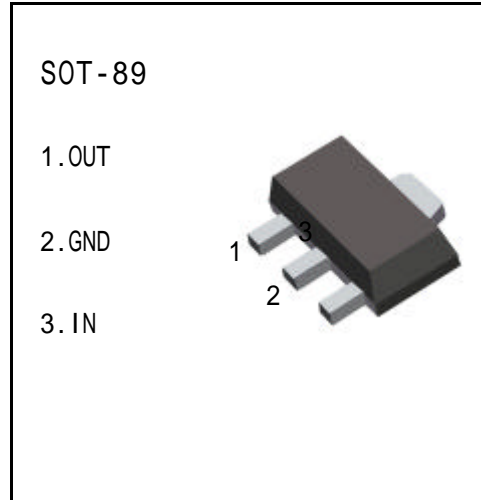
Maximum Output current

I_{OM} : 0.1 A

Output voltage

V_O : 8 V

ABSOLUTE MAXIMUM RATINGS (Operating temperature range applies unless otherwise specified)



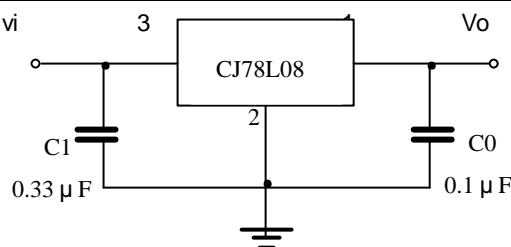
Parameter	Symbol	Value	Units
Input Voltage	V_I	30	V
Operating Junction Temperature Range	T_{OPR}	0—+125	
Storage Temperature Range	T_{STG}	-55—+150	

ELECTRICAL CHARACTERISTICS

($V_I=14V, I_O=40mA, 0 < T_j < 125$, $C_1=0.33 \mu F, C_O=0.1 \mu F$, unless otherwise specified)

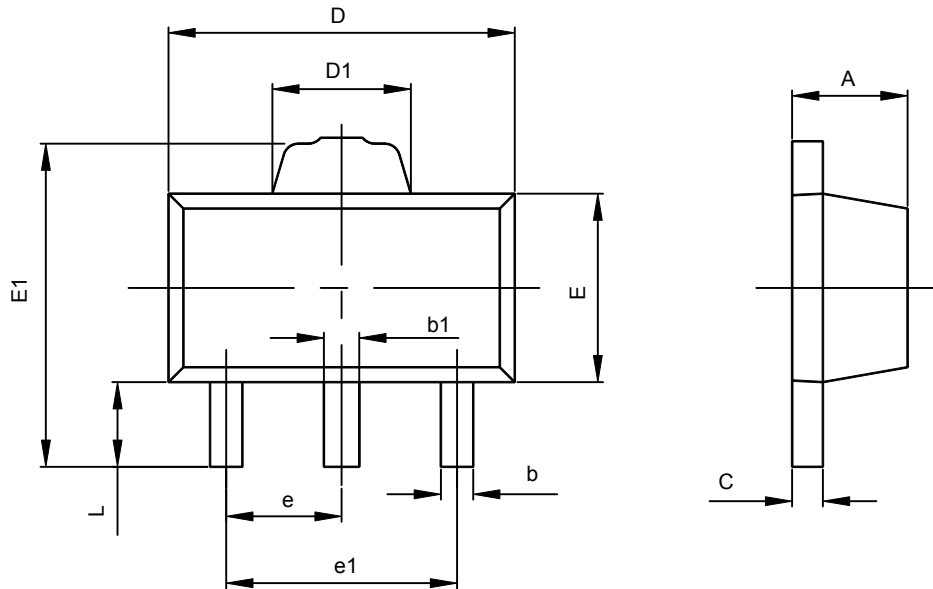
Parameter	Symbol	Test conditions	MIN	TYP	MAX	UNIT
Output voltage	V_O	$T_j=25$	7.7	8.0	8.3	V
		10.5V V_I 23V, $I_O=1mA-40mA$	7.6	8.0	8.4	V
		10.5V V_I V_{MAX} , $I_O=1mA-70mA$	7.6	8.0	8.4	V (note)
Load Regulation	V_O	$T_j=25$, $I_O=1mA-100mA$		18	80	mV
		$T_j=25$, $I_O=1mA-70mA$		10	40	mV
Line regulation	V_O	10.5V V_I 23V, $T_j=25$		42	175	mV
		11V V_I 23V, $T_j=25$		36	125	mV
Quiescent Current	I_q	25		4	6	mA
Quiescent Current Change	I_q	11V V_I 23V			1.5	mA
	I_q	1mA I_O 40mA			0.1	mA
Output Noise Voltage	V_N	10Hz f 100KHz		54		uV
Ripple Rejection	RR	13V V_I 23V, f=120Hz, $T_j=25$	37	46		dB
Dropout Voltage	V_d	$T_j=25$		1.7		V

TYPICAL APPLICATION



Note : Bypass capacitors are recommended for optimum stability and transient response and should be located as close as possible to the regulators.

SOT-89-3L PACKAGE OUTLINE DIMENSIONS



Symbol	Dimensions In Millimeters		Dimensions In Inches	
	Min	Max	Min	Max
A	1.400	1.600	0.055	0.063
b	0.320	0.520	0.013	0.020
b1	0.360	0.560	0.014	0.022
c	0.350	0.440	0.014	0.017
D	4.400	4.600	0.173	0.181
D1	1.400	1.800	0.055	0.071
E	2.300	2.600	0.091	0.102
E1	3.940	4.250	0.155	0.167
e	1.500TYP		0.060TYP	
e1	2.900	3.100	0.114	0.122
L	0.900	1.100	0.035	0.043