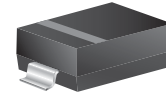


CDBW0520L-G - CDBW0540-G

Voltage: 20- 40 Volts
Current: 0.5 Amp
RoHS Device

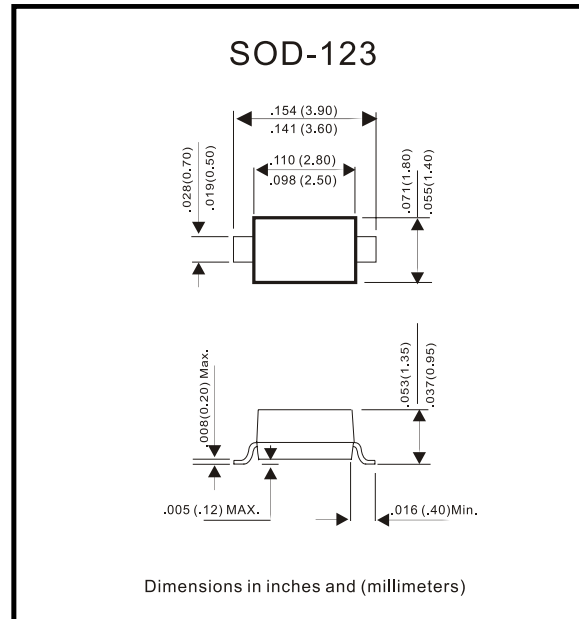


Feature

- Low turn-on voltage
- Fast switching
- PN junction guard ring for transient and ESD protection

Mechanical data

- Case: SOD-123, molded plastic
- Terminals: solderable per MIL-STD-750, method 2026
- Polarity: Indicated by cathode band
- Approx. Weight: 0.008 grams



Maximum Ratings and Electrical Characteristics

Parameter	Symbol	CDBW0520L-G	CDBW0530-G	CDBW0540-G	Unit
Max. Repetitive Peak Reverse Voltage	V_{RRM}	20	30	40	V
DC Blocking Voltage	V_{DC}	20	30	40	V
Max. RMS Voltage	V_{RMS}	14	21	28	V
Peak Surge Forward Current 8.3ms single half sine-wave Sine-wave superimposed on Rate load (JEDEC)	I_{FSM}	5.5			A
Max. Average Forward Current	I_o	0.5			A
Max. Forward Voltage	V_F	0.3 @ $I_F=0.1A$ 0.385 @ $I_F=0.5A$	0.375 @ $I_F=0.1A$ 0.430 @ $I_F=0.5A$	0.51 @ $I_F=0.5A$ 0.62 @ $I_F=1.0A$	V
Max. Reverse Current	I_R	0.075 @ $V_R=10V$ 0.25 @ $V_R=20V$	0.02 @ $V_R=15V$ 0.13 @ $V_R=30V$	0.01 @ $V_R=20V$ 0.02 @ $V_R=40V$	mA
Max. Thermal Resistance	$R_{\theta JA}$	206			°C/W
	$R_{\theta JL}$	150			
Max. Operating junction temperature	T_j	125			°C
Storage temperature	T_{STG}	-55 to +125			°C

Note 1: Thermal resistance from junction to ambient and junction to lead Mounted on PCB with 0.2 x 0.2 inch² copper pad areas

REV.:A

RATING AND CHARACTERISTIC CURVES (CDBW0520L-G-0540-G)

Fig. 1 - Forward Characteristics

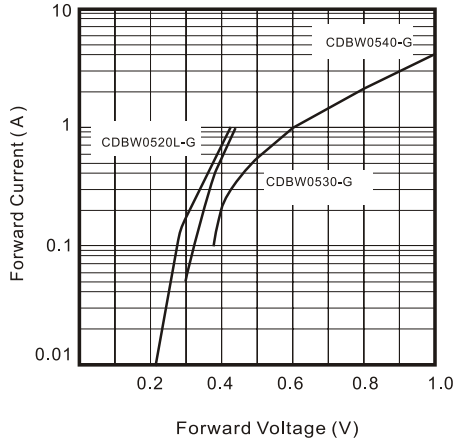


Fig. 2 - Current Derating Curve

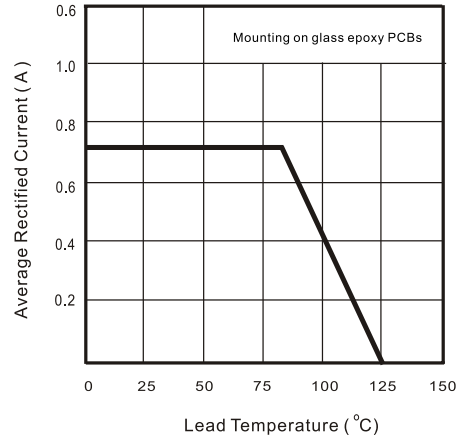


Fig. 3 - Total Capacitance vs Reverse Voltage

