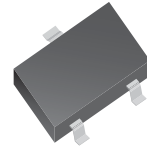


CDBV3-40/S/C/A-G

Reverse Voltage: 40 Volts
Forward Current: 200mA
RoHS Device

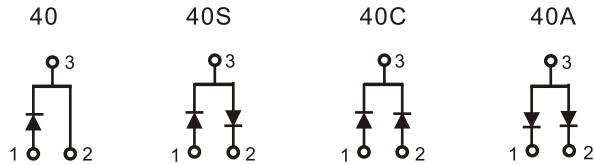
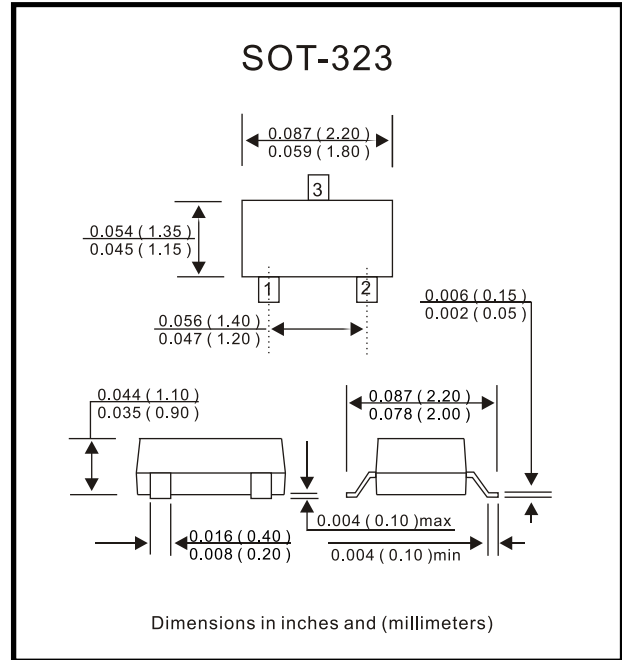


Features

- Designed for mounting on small surface.
- High speed switching application, circuit protection.
- Low turn-on voltage

Mechanical data

- Case: SOT-23, molded plastic.
- Terminals: Solder plated, solderable per MIL-STD-750, method 208.
- Approx. weight: 0.006 gram



Maximum Ratings and Electrical Characteristics (at Ta = 25°C unless otherwise noted)

| Parameter | Condition | Symbol | Value | Unit |
|---------------------------------|---|------------------|-------------|------|
| Repetitive peak reverse voltage | | V _{RRM} | 40 | V |
| Reverse voltage | | V _R | 40 | V |
| Forward current | | I _F | 200 | mA |
| Surge peak forward current | T = 1.0 sec | I _{FSM} | 0.6 | A |
| Power dissipation | | P _d | 200 | mW |
| Maximum forward voltage | @ I _F = 1.0 mA, t _p <300us @ I _F = 40 mA, t _p <300us | V _F | 0.38 1.0 | V |
| Maximum reverse current | @ V _R = 30V | I _R | 0.2 | uA |
| Max reverse recovery time | Note 1 | T _{rr} | 5 | nS |
| Maximum diode capacitance | V _R =0V, f=1MHz | C _j | 5 | pF |
| Max. junction temperature | | T _j | 125 | °C |
| Storage temperature | | T _{STG} | -65 to +150 | °C |

Note 1: I_F=10mA through I_R=10mA to I_R=1.0mA, R_L=100 ohms

RATING AND CHARACTERISTIC CURVES (CDBV3-40/S/C/A-G)

Fig. 1 - Forward characteristics

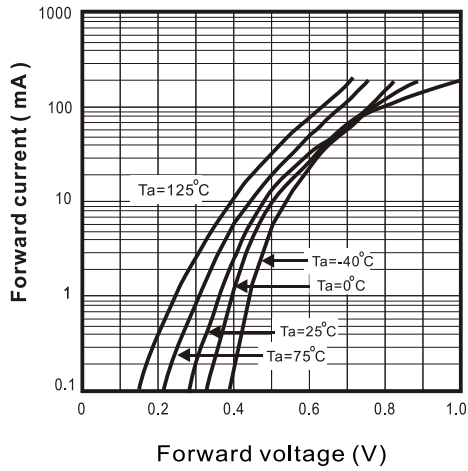


Fig. 2 - Reverse characteristics

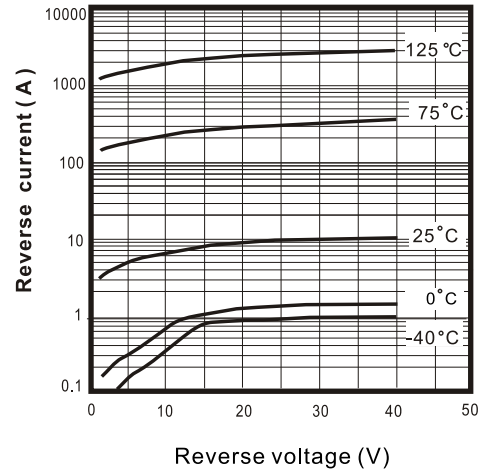


Fig. 3 - Capacitance between terminals characteristics

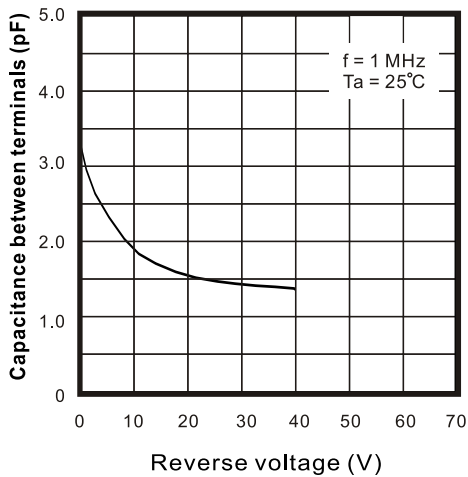


Fig. 4 - Power Derating Curve

