



SAW Components

Data Sheet B7630





SAW Components

B7630

Low-Loss Filter for Mobile Communication

836,5 / 881,5 MHz

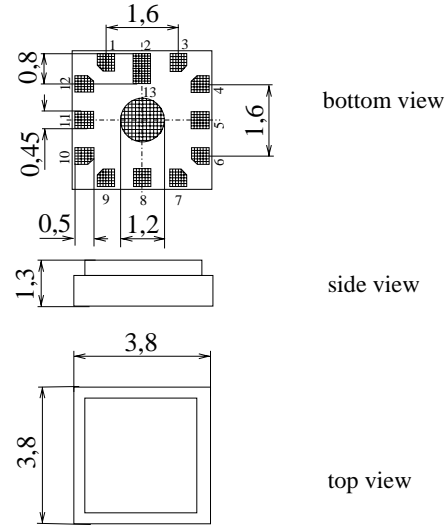
Data Sheet



Chip sized SAW package QCS12H

Features

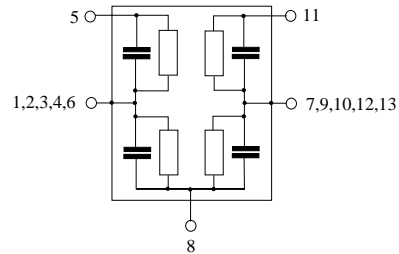
- Low-loss duplexer for cellular band mobile telephone systems
- 50 Ω ports by integrated matching network
- Multifunctional ceramic base material for Surface Mounted Technology (SMT)
- Small size and low height
- RoHS compliant



Dimensions in mm, approx. weight 0,08 g

Pin configuration

- | | |
|------------------|-----------|
| 11 | TX Input |
| 5 | RX Output |
| 8 | Antenna |
| 1, 2, 3, 4, 6 | Ground |
| 7, 9, 10, 12, 13 | Ground |



Type	Ordering code	Marking and Package according to	Packing according to
B7630	B39881-B7630-P910	C61157-A3-A18	F61074-V8187-Z000

Electrostatic Sensitive Device (ESD)

Maximum ratings

Operable temperature range	T	- 30/+ 85	°C	MM, JESD22-A115-A HMB, JESD22-A114-B source and load impedance 50 Ω } continuous wave
Storage temperature range	T_{stg}	- 40/+ 85	°C	
DC voltage	V_{DC}	5	V	
ESD voltage	V_{ESD}	250	V	
	V_{ESD}	500	V	
Input power max.	P_{IN}	824,0 ... 849,0 MHz	30 dBm	
		elsewhere	10 dBm	



SAW Components

B7630

Low-Loss Filter for Mobile Communication

836,5 / 881,5 MHz

Data Sheet



Characteristics

Operating temperature range $T = 25 \pm 2^\circ\text{C}$
 ANT terminating impedance $Z_{\text{ANT}} = 50 \Omega$
 RX terminating impedance $Z_{\text{RX}} = 50 \Omega$
 TX terminating impedance $Z_{\text{TX}} = 50 \Omega$

Characteristics TX - ANT		min.	typ.	max.	
Center frequency	f_c	—	836,50	—	MHz
Maximum insertion attenuation	α_{max}				
	824,00 ... 849,00 MHz	—	1,9	2,3	dB
Amplitude ripple (p-p)	$\Delta\alpha$				
	824,00 ... 849,00 MHz	—	0,5	0,9	dB
Return loss					
TX - Port	824,00 ... 849,00 MHz	9,0	10,5	—	dB
ANT - Port	824,00 ... 849,00 MHz	10,0	14,0	—	dB
Attenuation	α				
	779,00 ... 804,00 MHz	21	35	—	dB
	869,00 ... 894,00 MHz	45	49	—	dB
	954,00 ... 1400,00 MHz	25	36	—	dB
	1400,00 ... 1698,00 MHz	35	41	—	dB
	1698,00 ... 2000,00 MHz	30	41	—	dB
	2000,00 ... 2400,00 MHz	25	37	—	dB
	2400,00 ... 2485,00 MHz	30	35	—	dB
	2485,00 ... 2700,00 MHz	25	37	—	dB
TX band phase @ TX port reference plane					
	824,00 MHz	—	250	—	°
	836,00 MHz	—	245	—	°
	849,00 MHz	—	275	—	°



SAW Components

B7630

Low-Loss Filter for Mobile Communication

836,5 / 881,5 MHz

Data Sheet



Characteristics

Operating temperature range	$T = 25 \pm 2^\circ \text{C}$
ANT terminating impedance	$Z_{\text{ANT}} = 50 \Omega$
RX terminating impedance	$Z_{\text{RX}} = 50 \Omega$
TX terminating impedance	$Z_{\text{TX}} = 50 \Omega$

Characteristics ANT - RX		min.	typ.	max.	
Center frequency	f_c	—	881,50	—	MHz
Maximum insertion attenuation	α_{max}				
	869,00 ... 894,00 MHz	—	2,7	3,2	dB
Amplitude ripple (p-p)	$\Delta\alpha$				
	869,00 ... 894,00 MHz	—	1,0	1,6	dB
Return loss					
ANT - Port	869,00 ... 894,00 MHz	8,0	8,5	—	dB
RX - Port	869,00 ... 894,00 MHz	9,0	10,0	—	dB
Attenuation	α				
	779,00 ... 804,00 MHz	35	41	—	dB
	824,00 ... 849,00 MHz	53,5	56	—	dB
	954,00 ... 1700,00 MHz	35	40	—	dB
	1700,00 ... 2400,00 MHz	35	44	—	dB
	2400,00 ... 2500,00 MHz	30	42	—	dB
	2500,00 ... 3000,00 MHz	25	38	—	dB
TX band phase @ RX port reference plane					
	824,00 ... 849,00 MHz	—	150 - 220	—	°

Characteristics TX - RX		min.	typ.	max.	
Isolation between TX and RX path	α				
	824,00 ... 849,00 MHz	55	59	—	dB
	869,00 ... 894,00 MHz	46	49	—	dB
	1648,00 ... 1698,00 MHz	45	55	—	dB



SAW Components

B7630

Low-Loss Filter for Mobile Communication

836,5 / 881,5 MHz

Data Sheet



Characteristics

Operating temperature range $T = -30$ to 85°C
 ANT terminating impedance $Z_{\text{ANT}} = 50 \Omega$
 RX terminating impedance $Z_{\text{RX}} = 50 \Omega$
 TX terminating impedance $Z_{\text{TX}} = 50 \Omega$

Characteristics TX - ANT		min.	typ.	max.	
Center frequency	f_c	—	836,50	—	MHz
Maximum insertion attenuation	α_{max}				
	824,00 ... 849,00 MHz	—	2,0	2,5	dB
Amplitude ripple (p-p)	$\Delta\alpha$				
	824,00 ... 849,00 MHz	—	0,5	1,0	dB
Return loss					
TX - Port	824,00 ... 849,00 MHz	9,0	10,0	—	dB
ANT - Port	824,00 ... 849,00 MHz	10,0	12,5	—	dB
Attenuation	α				
	779,00 ... 804,00 MHz	21	35	—	dB
	869,00 ... 894,00 MHz	45	49	—	dB
	954,00 ... 1400,00 MHz	25	36	—	dB
	1400,00 ... 1698,00 MHz	35	41	—	dB
	1698,00 ... 2000,00 MHz	30	41	—	dB
	2000,00 ... 2400,00 MHz	25	37	—	dB
	2400,00 ... 2485,00 MHz	30	35	—	dB
	2485,00 ... 2700,00 MHz	25	37	—	dB
TX band phase @ TX port reference plane					
	824,00 MHz	—	250	—	°
	836,00 MHz	—	245	—	°
	849,00 MHz	—	275	—	°



SAW Components

B7630

Low-Loss Filter for Mobile Communication

836,5 / 881,5 MHz

Data Sheet



Characteristics

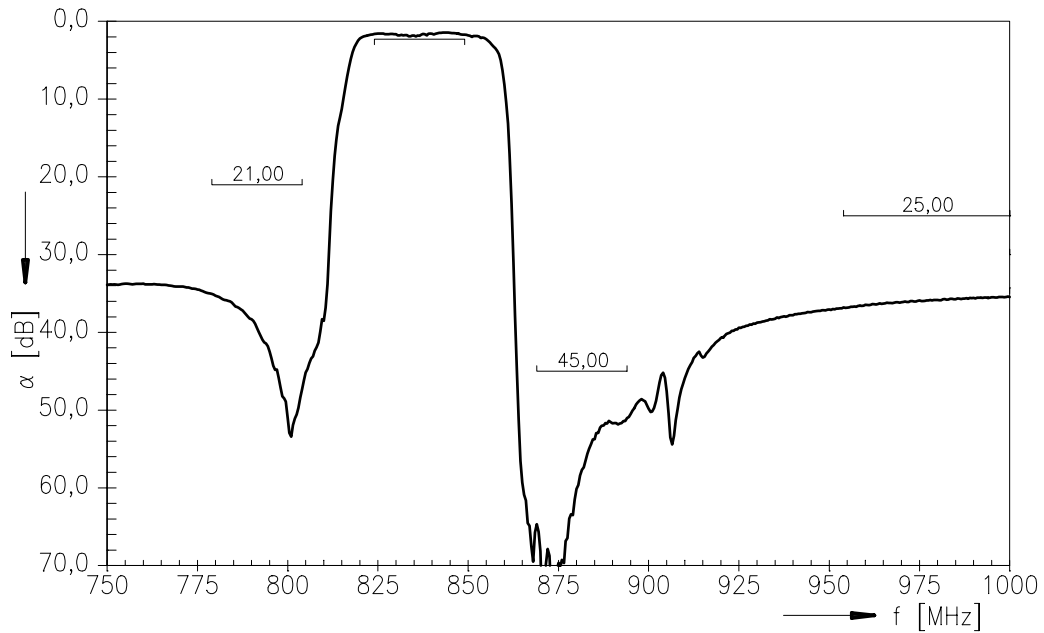
Operating temperature range $T = -30$ to 85°C
 ANT terminating impedance $Z_{\text{ANT}} = 50\ \Omega$
 RX terminating impedance $Z_{\text{RX}} = 50\ \Omega$
 TX terminating impedance $Z_{\text{TX}} = 50\ \Omega$

Characteristics ANT - RX		min.	typ.	max.	
Center frequency	f_c	—	881,50	—	MHz
Maximum insertion attenuation	α_{max}				
	869,00 ... 894,00 MHz	—	2,8	3,5	dB
Amplitude ripple (p-p)	$\Delta\alpha$				
	869,00 ... 894,00 MHz	—	1,1	1,7	dB
Return loss					
ANT - Port	869,00 ... 894,00 MHz	7,5	8,0	—	dB
RX - Port	869,00 ... 894,00 MHz	9,0	10,0	—	dB
Attenuation	α				
	779,00 ... 804,00 MHz	35	41	—	dB
	824,00 ... 849,00 MHz	53,5	56	—	dB
	954,00 ... 1700,00 MHz	35	40	—	dB
	1700,00 ... 2400,00 MHz	35	44	—	dB
	2400,00 ... 2500,00 MHz	30	42	—	dB
	2500,00 ... 3000,00 MHz	25	38	—	dB
TX band phase @ RX port reference plane					
	824,00 ... 849,00 MHz	—	150 - 220	—	$^{\circ}$

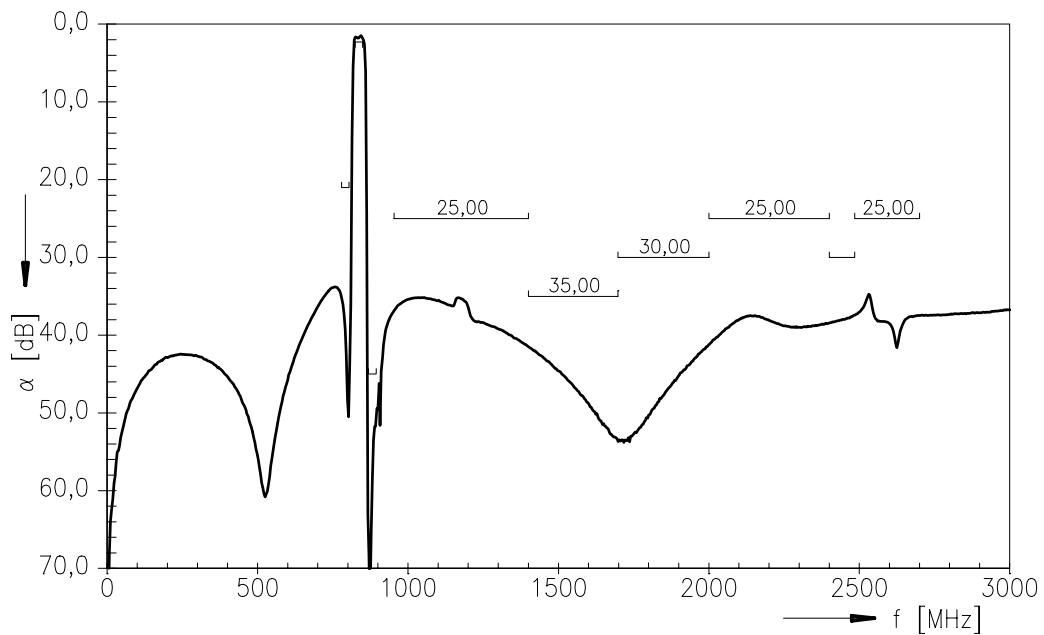
Characteristics TX - RX		min.	typ.	max.	
Isolation between TX and RX path	α				
	824,00 ... 849,00 MHz	54	59	—	dB
	869,00 ... 894,00 MHz	46	49	—	dB
	1648,00 ... 1698,00 MHz	45	55	—	dB



Frequency Response TX - ANT

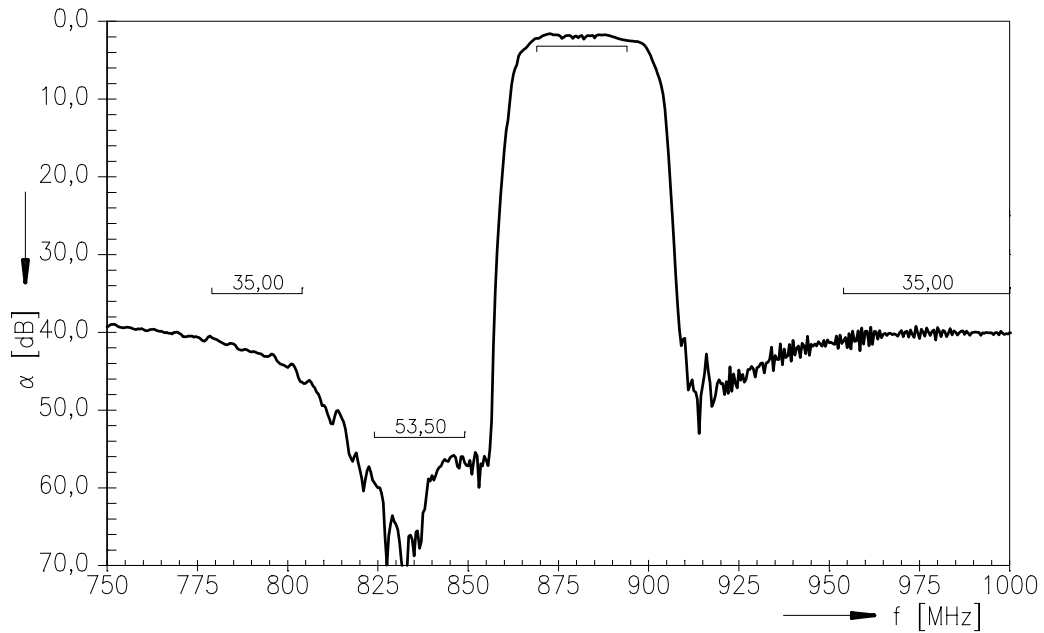


Frequency Response TX - ANT (wideband)

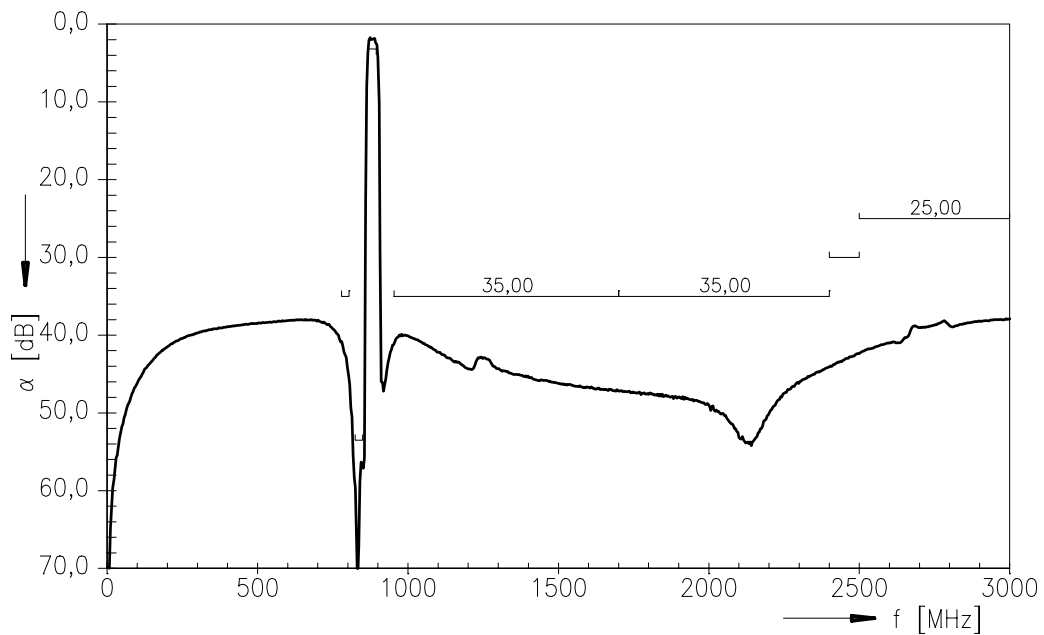




Frequency Response ANT - RX

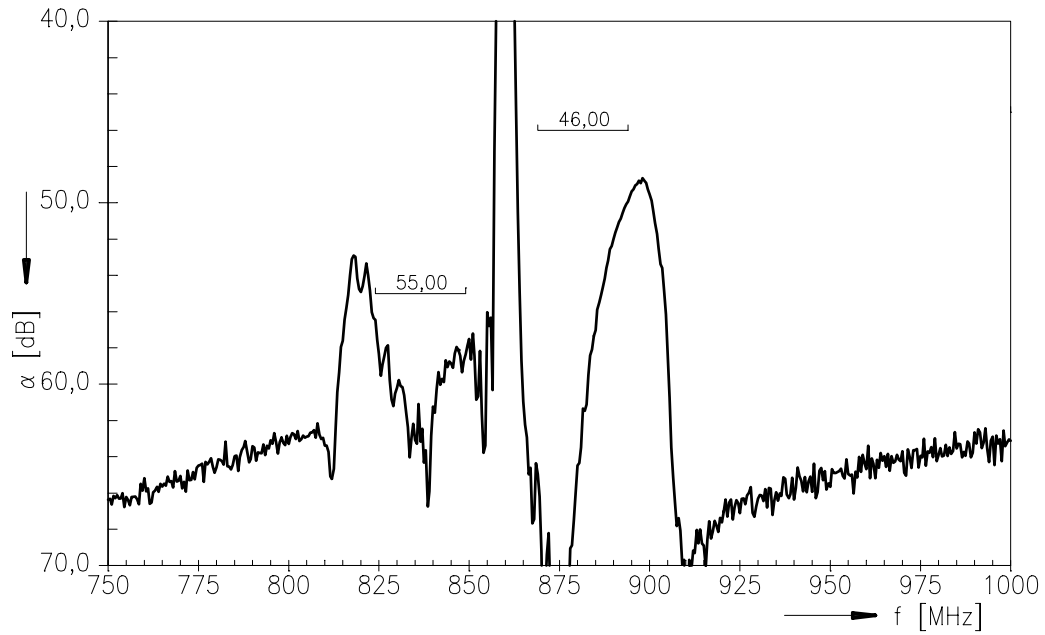


Frequency Response ANT - RX (wideband)

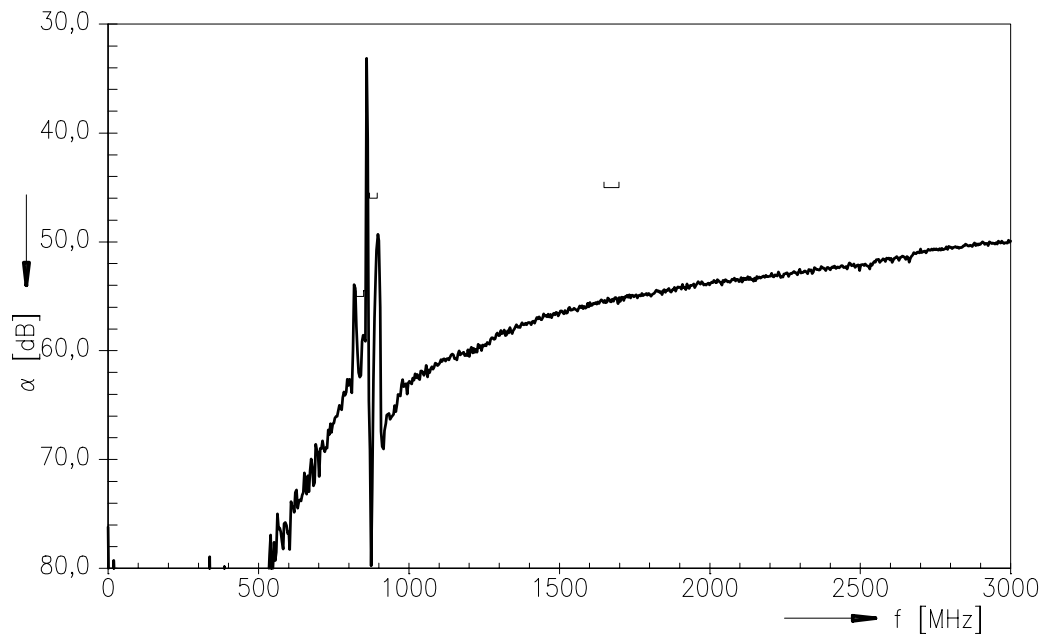




Frequency Response TX - RX



Frequency Response TX - RX (wideband)





SAW Components

B7630

Low-Loss Filter for Mobile Communication

836,5 / 881,5 MHz

Data Sheet



Published by EPCOS AG

Surface Acoustic Wave Components Division, SAW MC PD

P.O. Box 80 17 09, 81617 Munich, GERMANY

© EPCOS AG 2005. Reproduction, publication and dissemination of this brochure and the information contained therein without EPCOS' prior express consent is prohibited.

Purchase orders are subject to the General Conditions for the Supply of Products and Services of the Electrical and Electronics Industry recommended by the ZVEI (German Electrical and Electronic Manufacturers' Association), unless otherwise agreed.

This brochure replaces the previous edition.

For questions on technology, prices and delivery please contact the Sales Offices of EPCOS AG or the international Representatives.

Due to technical requirements components may contain dangerous substances. For information on the type in question please also contact one of our Sales Offices.