



SAW Components

Data Sheet B3662





SAW Components

B3662

Low-Loss Filter

333,0 MHz

Data Sheet

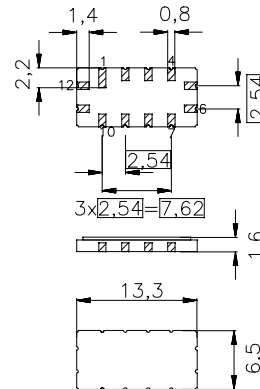
Features

Ceramic package **QCC12**

- IF filter for WLL
- Ceramic SMD package
- Low insertion attenuation

Terminals

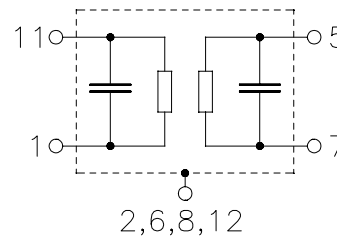
- Gold plated



Dimens. in mm, approx. weight 0,4 g

Pin configuration

11	Input
5	Output
1	Input ground
7	Output ground
3, 4, 9, 10	Ground
2, 6, 8, 12	Case ground



Type	Ordering code	Marking and Package according to	Packing according to
B3662	B39331-B3662-Z510	C61157-A7-A55	F61074-V8026-Z000

Electrostatic Sensitive Device (ESD)

Maximum ratings

Operable temperature range	T_A	-40 / +85	°C
Storage temperature range	T_{stg}	-45 / +85	°C
DC voltage	V_{DC}	0	V
Source power	P_s	10	dBm



SAW Components

B3662

Low-Loss Filter

333,0 MHz

Data Sheet

Characteristics

Operating temperature:

$$T_A = -45 \dots +85 \text{ }^\circ\text{C}$$

Terminating source impedance:

$$Z_S = 50 \text{ } \Omega \text{ and matching network}$$

Terminating load impedance:

$$Z_L = 50 \text{ } \Omega \text{ and matching network}$$

		min.	typ.	max.	
Center frequency	f_C	332,88	333,04	333,12	MHz
Minimum insertion attenuation	α_{\min}	—	7,5	9,0	dB
Passband width					
$\alpha_{\text{rel}} \leq 3,0 \text{ dB}$	$B_{3,0\text{dB}}$	0,62	0,66	—	MHz
$\alpha_{\text{rel}} \leq 20,0 \text{ dB}$	$B_{20\text{dB}}$	—	1,42	1,5	MHz
$\alpha_{\text{rel}} \leq 30,0 \text{ dB}$	$B_{30\text{dB}}$	—	1,65	1,7	MHz
$\alpha_{\text{rel}} \leq 40,0 \text{ dB}$	$B_{40\text{dB}}$	—	1,83	1,9	MHz
$\alpha_{\text{rel}} \leq 50,0 \text{ dB}$	$B_{50\text{dB}}$	—	5,0	6,0	MHz
Group delay ripple (p-p)	$\Delta\tau$				
332,72 ... 333,25 MHz		—	400	500	ns
332,69 ... 333,31 MHz		—	400	650	ns
Triple Transit Suppression		30	31	—	dB



SAW Components

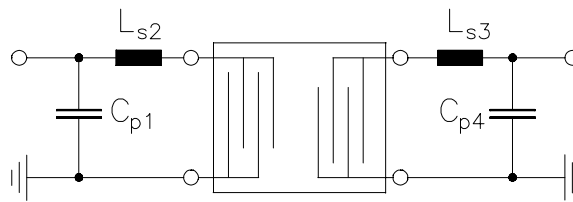
B3662

Low-Loss Filter

333,0 MHz

Data Sheet

Matching network (element values may depend on pcb layout)



$$C_{p1} = 15 \text{ pF}$$

$$L_{s2} = 18 \text{ nH}$$

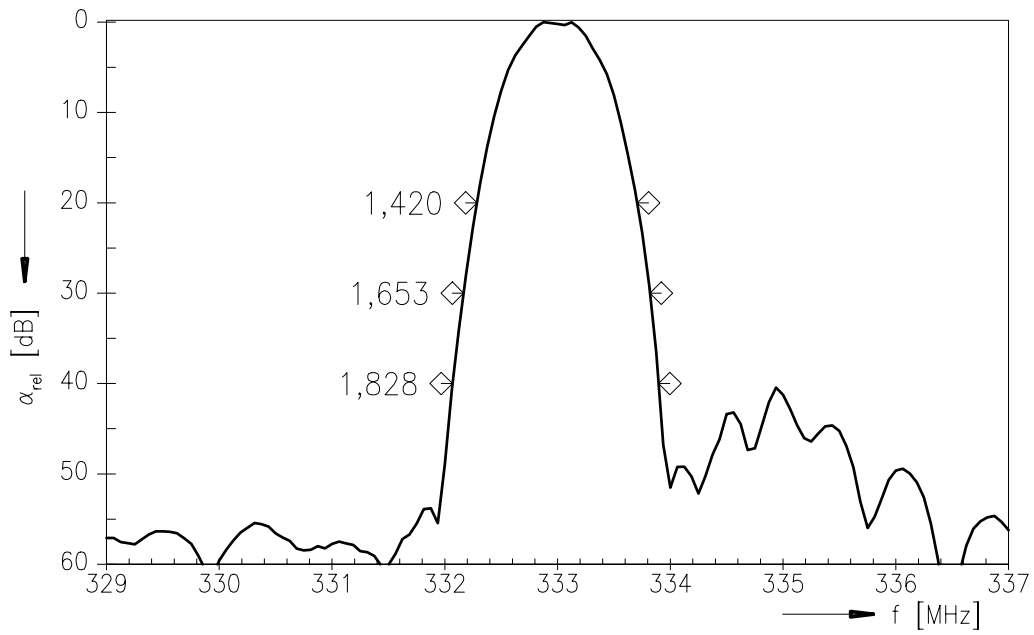
$$L_{s3} = 12 \text{ nH}$$

$$C_{p4} = 18 \text{ pF}$$

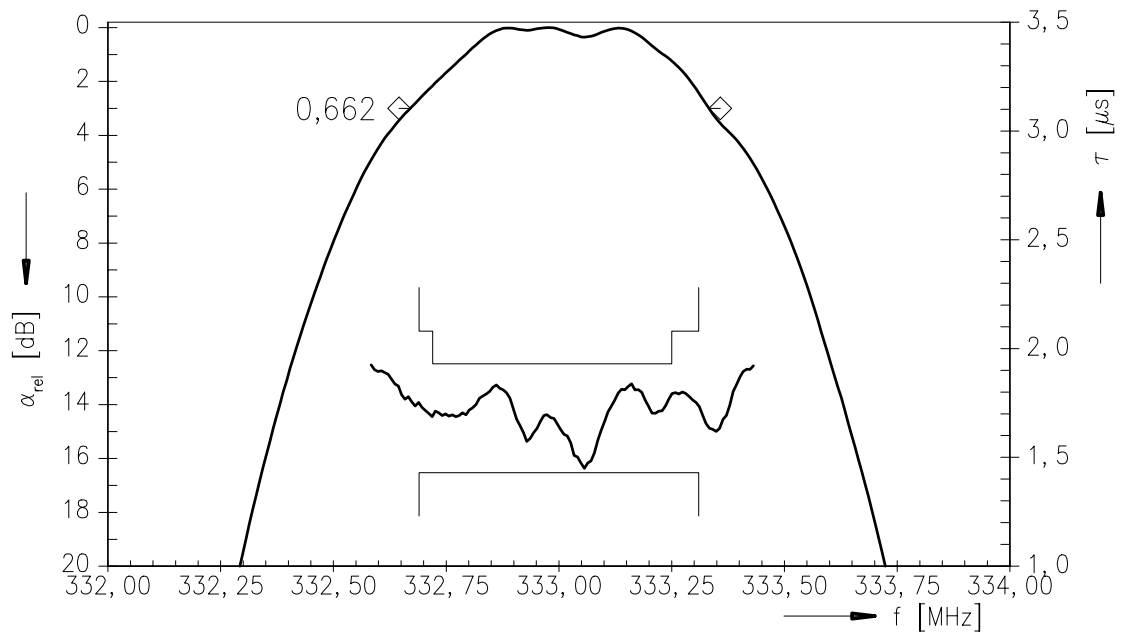


Data Sheet

Transfer function:



Transfer function (pass band):





SAW Components

B3662

Low-Loss Filter

333,0 MHz

Data Sheet

Published by EPCOS AG
Surface Acoustic Wave Components Division, OFW E NK
P.O. Box 80 17 09, D-81617 München

© EPCOS AG 1999. All Rights Reserved.

As far as patents or other rights of third parties are concerned, liability is only assumed for components per se, not for applications, processes and circuits implemented within components or assemblies.

The information describes the type of component and shall not be considered as assured characteristics.

Terms of delivery and rights to change design reserved.

For questions on technology, prices and delivery please contact the sales offices of EPCOS AG or the international representatives.

Due to technical requirements components may contain dangerous substances. For information on the type in question please also contact one of our sales offices.