



# SAW Components

Data Sheet B9016





**SAW Components**

**B9016**

**Low-Loss Filter**

**1575,42 MHz**

**Data Sheet**

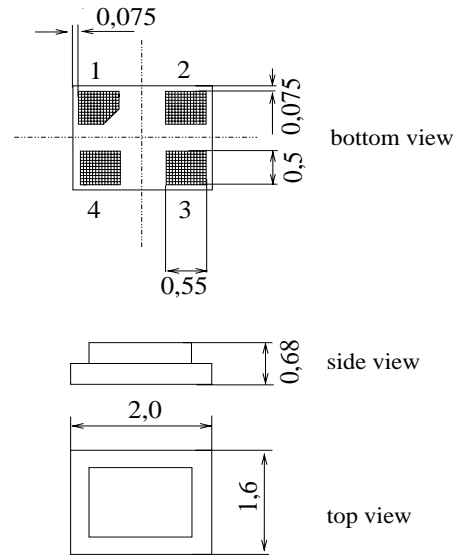
**Features**

- Low loss RF filter for GPS receivers
- Unbalanced to unbalanced operation
- Low amplitude ripple
- Package for **Surface Mounted Technology (SMT)**

**Terminals**

- Ni, gold-plated

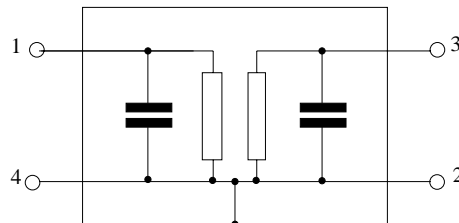
**Chip Sized SAW Package DCS4F**



Dimensions in mm, approx. weight 0,007g.

**Pin configuration**

- 1 Input
- 3 Output
- 2,4 Ground



Type	Ordering code	Marking and Package according to	Packing according to
B9016	B39162-B9016-E610	C61157-A7-A113	F61074-V8152-Z000

**Electrostatic Sensitive Device (ESD)**

**Maximum ratings**

Operable temperature range	$T$	- 30/+ 85	°C	machine model, 10 pulses
Storage temperature range	$T_{stg}$	- 40/+ 85	°C	
DC voltage	$V_{DC}$	3	V	
ESD voltage	$V_{ESD}^*$	50*	V	
Input power max. 1573,42 ... 1577,42 MHz	$P_{IN}$	3	dBm	source and load impedance 50 $\Omega$ continuous wave signal
50,0...1460 and 1710 ... 4000 MHz	$P_{IN}$	13	dBm	

\* acc. to JESD22-A115A (Machine Model), 10 negative & 10 positive pulses



**SAW Components**

**B9016**

**Low-Loss Filter**

**1575,42 MHz**

**Data Sheet**

**Characteristics**

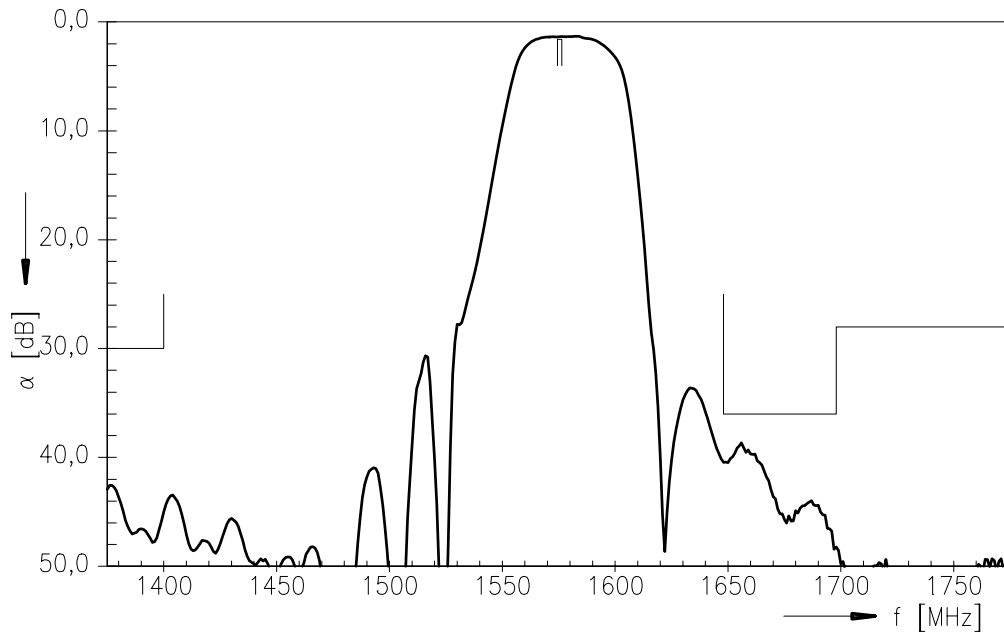
Operating temperature range:  $T_A = -30 \dots +85 \text{ }^\circ\text{C}$   
 Terminating source impedance:  $Z_S = 50 \text{ } \Omega \text{ unbal.}$   
 Terminating load impedance:  $Z_L = 50 \text{ } \Omega \text{ unbal.}$

			<b>min.</b>	<b>typ.</b>	<b>max.</b>	
<b>Nominal frequency</b>	$f_N$		—	1575,42	—	MHz
<b>Maximum insertion attenuation</b>	$\alpha_{\max}$	1574,67MHz ... 1576,17 MHz	—	1,4	2,0	dB
<b>Amplitude ripple in passband (p-p)</b>	$\Delta\alpha$	1574,67MHz ... 1576,17 MHz	—	0,05	0,3	dB
<b>Phase linearity</b>		1574,67MHz ... 1576,17 MHz	—	0,05	0,3	deg
<b>Attenuation</b>	$\alpha$					
		0,1 MHz ... 915,0 MHz	35	42	—	dB
		915,0 MHz ... 1400,0 MHz	30	42	—	dB
		1648,0 MHz ... 1698,0 MHz	36	39	—	dB
		1698,0 MHz ... 1850,0 MHz	28	46	—	dB
		1850,0 MHz ... 1980,0 MHz	35	46	—	dB
		1980,0 MHz ... 2245,0 MHz	25	36	—	dB
		2245,0 MHz ... 3555,0 MHz	25	50	—	dB
		5275,0 MHz ... 5535,0 MHz	5	45	—	dB
<b>VSWR</b>		1574,67MHz ... 1576,17 MHz	—	1,3	1,8	

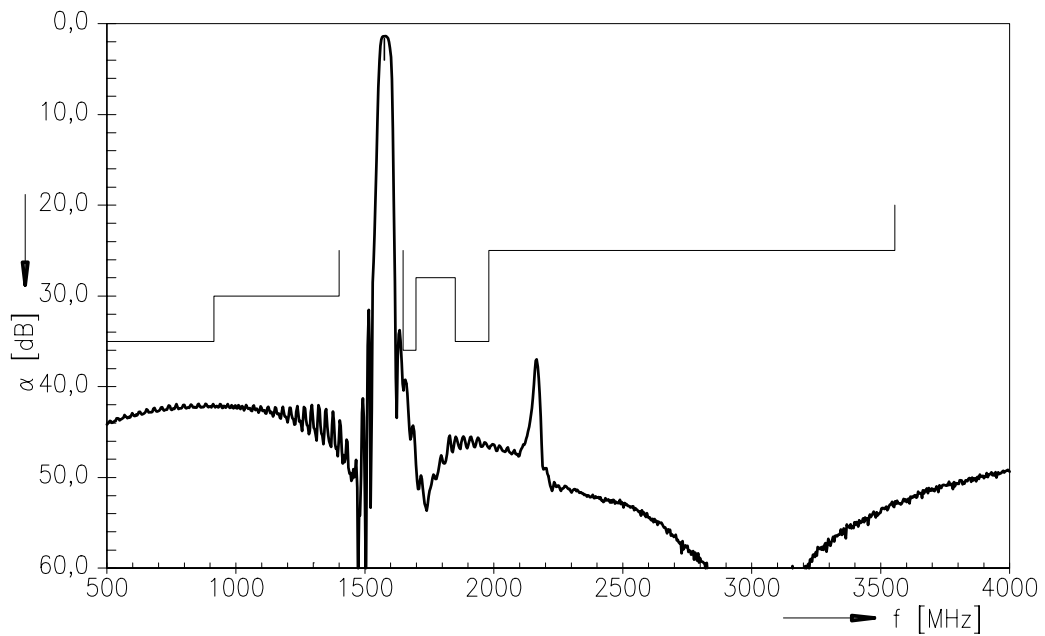


Data Sheet

Transfer function (pass band) :



Transfer function :





**SAW Components**

**B9016**

**Low-Loss Filter**

**1575,42 MHz**

Data Sheet

**Published by EPCOS AG**

**SAW MC WT, P.O. Box 80 17 09, 81617 Munich, GERMANY**

**TEL ++49 89 636 09, FAX ++49 89 636 2 26 89**

© EPCOS AG 2004. Reproduction, publication and dissemination of this brochure and the information contained therein without EPCOS' prior express consent is prohibited.

Purchase orders are subject to the General Conditions for the Supply of Products and Services of the Electrical and Electronics Industry recommended by the ZVEI (German Electrical and Electronic Manufacturers' Association), unless otherwise agreed.

This brochure replaces the previous edition.

For questions on technology, prices and delivery please contact the Sales Offices of EPCOS AG or the international Representatives.

Due to technical requirements components may contain dangerous substances. For information on the type in question please also contact one of our Sales Offices.