



SAW Components

Data Sheet B5007





SAW Components

B5007

Low-Loss Filter

143,25 MHz

Data Sheet

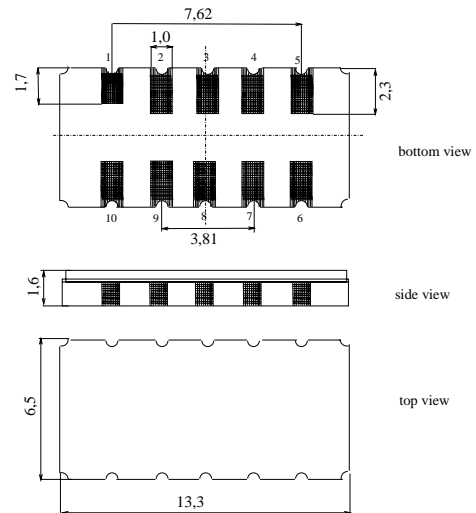
Features

- Low-loss IF filter for CDMA2000 base station, receive path
- 3,78 MHz usable bandwidth
- Balanced or unbalanced operation possible
- Temperature stable
- Hermetically sealed ceramic SMD package

Terminals

- Gold plated

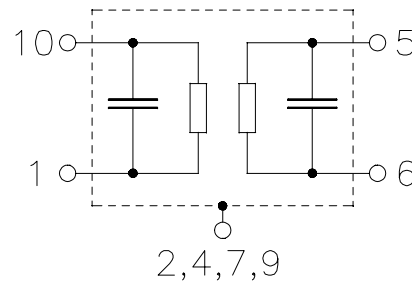
Ceramic package **DCC12A**



Dimensions in mm, approx. weight 0,4 g

Pin configuration

- | | |
|------------|----------------|
| 10 | Input |
| 1 | Input ground |
| 5 | Output |
| 6 | Output ground |
| 2, 4, 7, 9 | Case Ground |
| 3, 8 | To be grounded |



Type	Ordering code	Marking and Package according to	Packing according to
B5007	B39141-B5007-H510	C61157-A7-A94	F61074-V8163-Z000

Electrostatic Sensitive Device (ESD)

Maximum ratings

Operable temperature range	T	-30 / +85	°C
Storage temperature range	T_{stg}	-30 / +85	°C
DC voltage	V_{DC}	0	V
Source power	P_s	0	dBm


SAW Components
B5007
Low-Loss Filter
143,25 MHz
Data Sheet
Characteristics

Operating temperature range: $T = 0 \dots 70 \text{ }^\circ\text{C}$
 Terminating source impedance: $Z_S = 50 \text{ } \Omega$ unbalanced and matching network
 Terminating load impedance: $Z_L = 50 \text{ } \Omega$ unbalanced and matching network

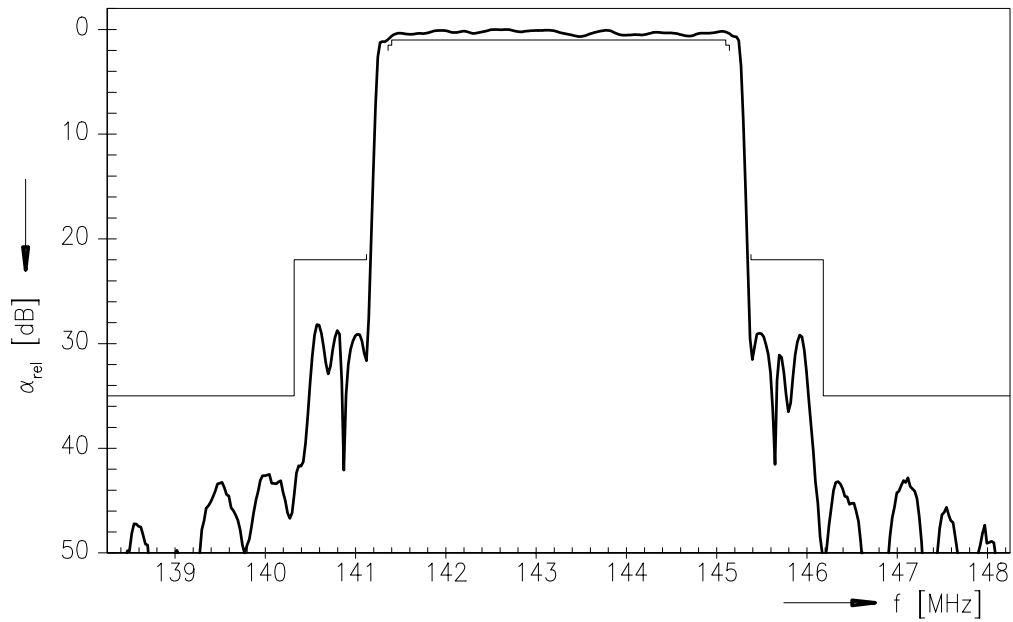
		min.	typ.	max.		
Nominal frequency	f_N	—	143,25	—	MHz	
Minimum insertion attenuation (including matching network)	α_{\min}	—	18,5	22,0	dB	
Passband width $\alpha_{\text{rel}} \leq 1,5 \text{ dB}$	$B_{1,5\text{dB}}$	3,78	3,95	—	MHz	
Amplitude ripple (p-p)	$\Delta\alpha$					
	$f_N \pm 1,89 \text{ MHz}$	—	1,0	1,5	dB	
	$f_N \pm 1,85 \text{ MHz}$	—	0,6	1,0	dB	
Group delay ripple (p-p)	$\Delta\tau$					
	$f_N \pm 1,875 \text{ MHz}$	—	300	400	ns	
	$f_N \pm 1,775 \text{ MHz}$	—	150	220	ns	
Difference of mean group delay in adj. channel ¹⁾	$f_N + k*1,25 \text{ MHz}$	$\Delta\tau_{\text{ch}}$	—	8	30	ns
Absolute Group delay	$f_N \pm 1,875 \text{ MHz}$	τ	1,8	2,0	2,35	μs
Phase Linearity ¹⁾ (rms)	$\Delta\phi$					
	$f_N + k*1,25 \text{ MHz} \pm 0,625 \text{ MHz}$		—	1,0	2,0	$^\circ$
Average Error Vector Magnitude ¹⁾	EVM					
	$f_N + k*1,25 \text{ MHz} \pm 0,625 \text{ MHz}$		—	2,5	4,0	%
Relative attenuation (relative to α_{\min})	α_{rel}					
	$f_N \pm 2,13 \text{ MHz} \dots f_N \pm 2,93 \text{ MHz}$		22	27	—	dB
	$f_N \pm 2,93 \text{ MHz} \dots f_N \pm 35 \text{ MHz}$		35	40	—	dB
	$f_N \pm 35 \text{ MHz} \dots f_N \pm 45 \text{ MHz}$		40	55	—	dB
Temperature coefficient of frequency ²⁾	TC_f	—	-0,036	—	ppm/K ²	
Turnover temperature	T_0	—	35	—	$^\circ\text{C}$	

¹⁾ $k = (-1,0,1)$
²⁾ Temperature dependance of f_c : $f_c(T_A) = f_c(T_0)(1 + TC_f(T_A - T_0)^2)$

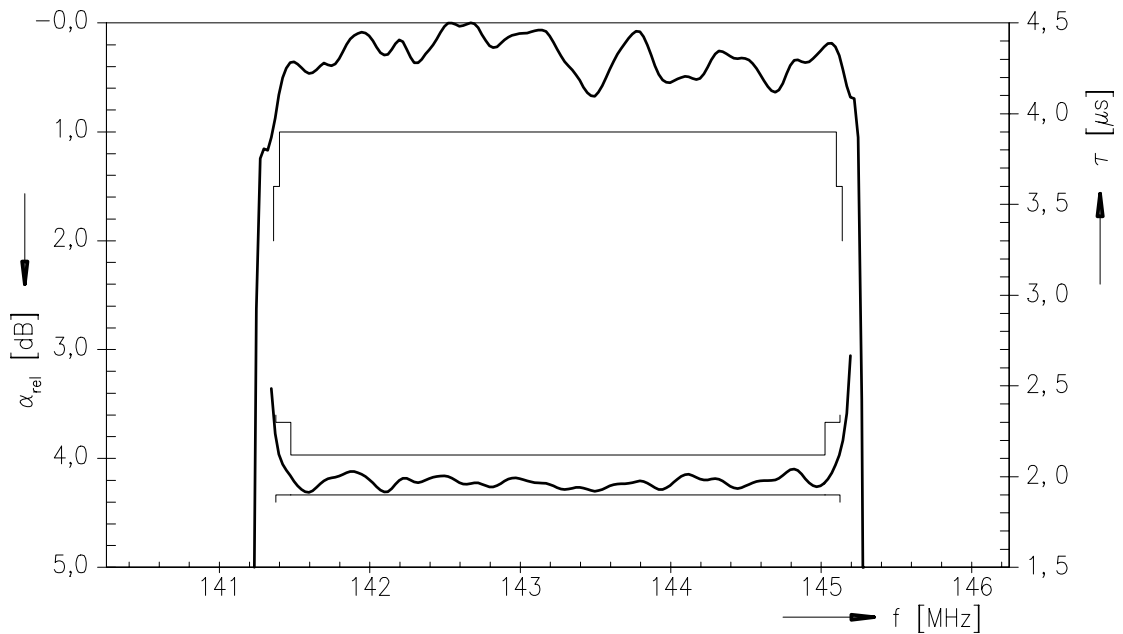


Data Sheet

Normalized frequency response

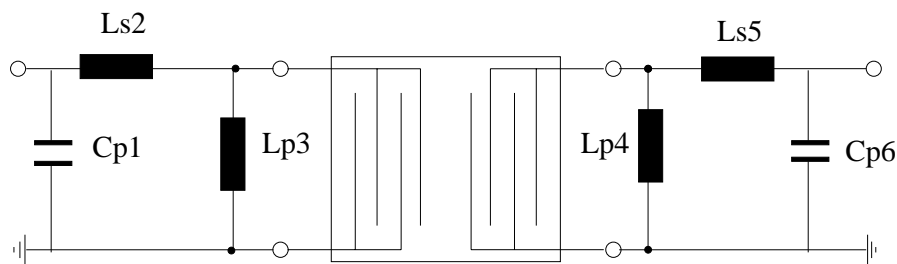


Normalized frequency response (pass band)



**Data Sheet****Matching network to 50 Ω :**

(element values depend on PCB layout)



$C_{p1} = 22 \text{ pF}$
 $L_{s2} = 82 \text{ nH}$

$L_{p3} = \text{not used}$
 $L_{p4} = 390 \text{ nH}$

$L_{s5} = 180 \text{ nH}$
 $C_{p6} = 22 \text{ pF}$

Published by EPCOS AG**Surface Acoustic Wave Components Division, SAW MC****P.O. Box 80 17 09, 81617 Munich, GERMANY**

© EPCOS AG 2004. Reproduction, publication and dissemination of this brochure and the information contained therein without EPCOS' prior express consent is prohibited.

Purchase orders are subject to the General Conditions for the Supply of Products and Services of the Electrical and Electronics Industry recommended by the ZVEI (German Electrical and Electronic Manufacturers' Association), unless otherwise agreed.

This brochure replaces the previous edition.

For questions on technology, prices and delivery please contact the Sales Offices of EPCOS AG or the international Representatives.

Due to technical requirements components may contain dangerous substances. For information on the type in question please also contact one of our Sales Offices.