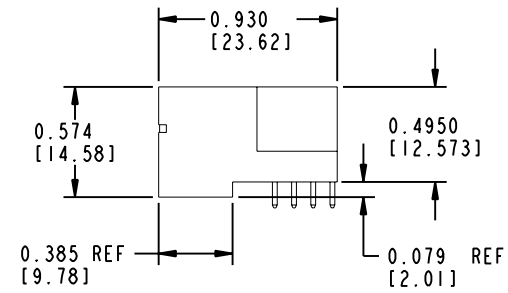
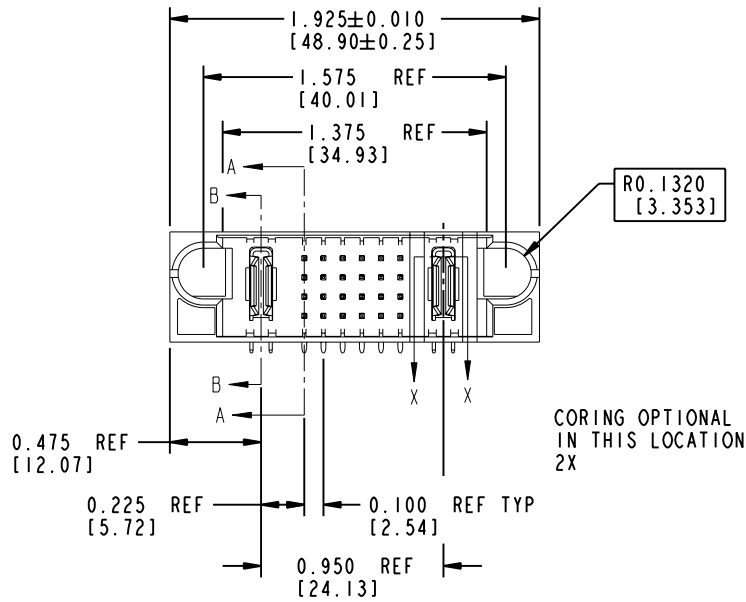
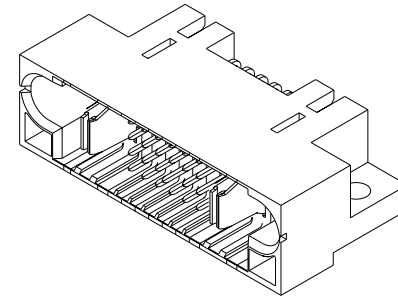
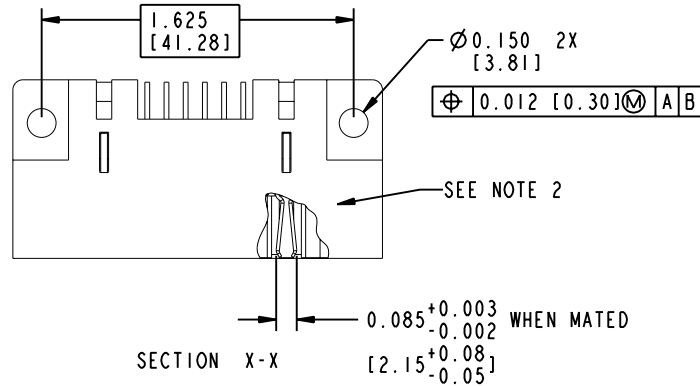


Tous droits strictement réservés. Reproduction ou communication o des tiers interdite sous quelque forme que ce soit sans autorisation écrite du propriétaire. Propriete de c FCI. Droits de reproduction FCI.

All rights strictly reserved. Reproduction or issue to third parties in any form, whenever is not permitted without written authority from the proprietor. Property of FCI. Copyright FCI.

PRODUCT NUMBER
SEE SHEET 3



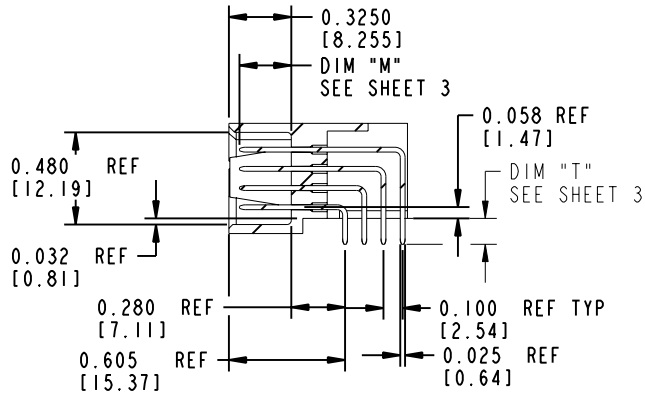
mat'l code SEE NOTE 1				tolerances unless otherwise specified			CUSTOMER COPY		ELECTRONICS www.fciconnect.com	
ltr	ecn no.	dr	date	linear	.XX±.01/.X±.3		projection 	title IP + 24S + IP RIGHT ANGLE SOLDER HEADER		
K	DG05-0064	SW	3/30/05		.XXX±.005/.X±.13			product family PWRBLADE code 213		
L	DG05-0435	SW	11/03/05	angles	.XXX±.0020/.XXX±.051		 INCH / MM scale 1:1	size A 51415		1 OF 5
					0°±2°			dr C. BAROT 01-12-99 engr J. BROWN 01-12-99 chr J. BROWN 01-12-99 appd J. BROWN 01-12-99		cage code 22526
sheet index	revision sheet	L 1	L 2	L 3	L 4	L 5				

THIS FILE WAS ORIGINALLY CREATED IN THE PRO ENGINEER ENVIRONMENT AND ANY FUTURE REVISIONS TO THIS FILE MUST BE MADE IN THE PRO ENGINEER ENVIRONMENT

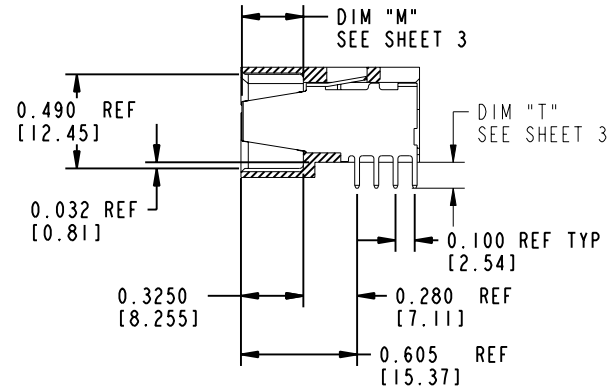
Tous droits strictement réservés. Reproduction ou communication o des tiers interdite sous quelque forme que ce soit sans autorisation écrite du propriétaire. Propriété de c FCI. Droits de reproduction FCI.

All rights strictly reserved. Reproduction or issue to third parties in any form whatever is not permitted without written authority from the proprietor. Property of FCI. Copyright FCI.

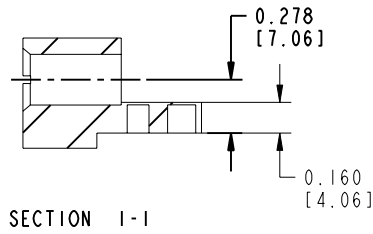
PRODUCT NUMBER
SEE SHEET 3



SECTION A-A
SCALE 1:1



SECTION B-B
SCALE 1:1



SECTION I-I

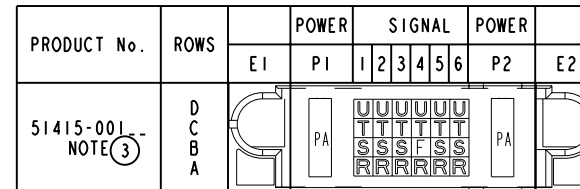
mat'l code				tolerances unless otherwise specified		CUSTOMER COPY		ELECTRONICS www.fciconnect.com			
ltr	ecn no.	dr	date	linear	.XX±.01/.X±.3	projection		title			
L					.XXX±.005/.X±.13			IP + 24S + IP		RIGHT ANGLE SOLDER HEADER	
				angles	XXX±.0020/.XXX±.05		INCH / MM	product family			
				0°±2°	PWRBLADE			code			
		dr	C. BAROT	01-12-99	scale 1:1	A	size	dwg no			
		enr	J. BROWN	01-12-99				51415		213	
		chr	J. BROWN	01-12-99							
		appd	J. BROWN	01-12-99							
sheet index	revision sheet							cage code			
								22526			

Tous droits strictement reserves. Reproduction ou communication a des tiers interdite sous quelque forme que ce soit sans autorisation écrite du propriétaire. Propriete de c FCI. Droits de reproduction FCI.

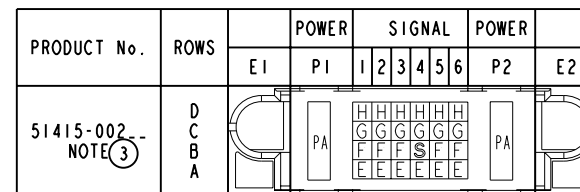
All rights strictly reserved. Reproduction or issue to third parties in any form whatever is not permitted without written authority from the proprietor. Property of FCI. Copyright FCI.

PRODUCT NUMBER
SEE TABLE

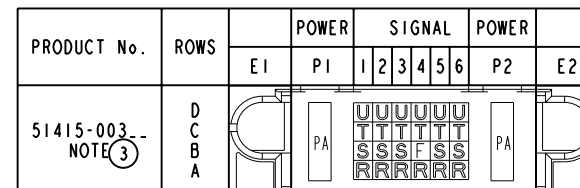
ITEM NO.	QTY	DIM "M" MATING LENGTH ±.010		DIM "T" TAIL LENGTH ±.020		CONTACT TYPE
PA	2	N/A	[N/A]	0.135	[3.43]	POWER
F	1	0.220	[5.59]	0.135	[3.43]	SIGNAL
R	6	0.270	[6.86]	0.135	[3.43]	SIGNAL
S	5	0.270	[6.86]	0.135	[3.43]	SIGNAL
T	6	0.270	[6.86]	0.135	[3.43]	SIGNAL
U	6	0.270	[6.86]	0.135	[3.43]	SIGNAL



ITEM NO.	QTY	DIM "M" MATING LENGTH ±.010		DIM "T" TAIL LENGTH ±.020		CONTACT TYPE
PA	2	N/A	[N/A]	0.135	[3.43]	POWER
E	6	0.220	[5.59]	0.135	[3.43]	SIGNAL
F	5	0.220	[5.59]	0.135	[3.43]	SIGNAL
G	6	0.220	[5.59]	0.135	[3.43]	SIGNAL
H	6	0.220	[5.59]	0.135	[3.43]	SIGNAL
S	1	0.270	[6.86]	0.135	[3.43]	SIGNAL



ITEM NO.	QTY	DIM "M" MATING LENGTH ±.010		DIM "T" TAIL LENGTH ±.020		CONTACT TYPE
PA	2	N/A	[N/A]	0.135	[3.43]	POWER
F	1	0.220	[5.59]	0.135	[3.43]	SIGNAL
R	6	0.270	[6.86]	0.135	[3.43]	SIGNAL
S	5	0.270	[6.86]	0.135	[3.43]	SIGNAL
T	6	0.270	[6.86]	0.135	[3.43]	SIGNAL
U	6	0.270	[6.86]	0.135	[3.43]	SIGNAL



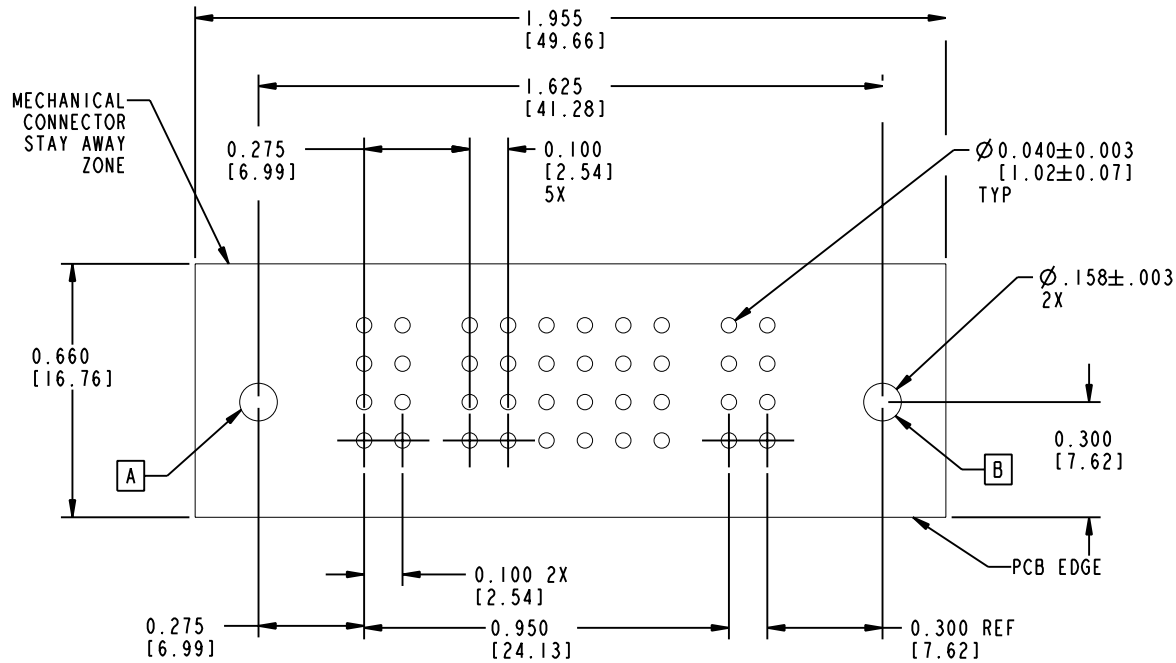
mat'l code SEE NOTE 1				tolerances unless otherwise specified		CUSTOMER COPY		ELECTRONICS www.fciconnect.com	
lfr	ecn no.	dr	date	linear	.XX±.01/.X±.3		projection 	title IP + 24S + IP	
L					.XXX±.005/.X±.13			RIGHT ANGLE SOLDER HEADER	
				angles	XXX±.0020/.XXX±.05		INCH / MM	product family PWRBLADE	
					0°±2°			code 213	
				dr	C. BAROT	01-12-99	scale 1:1	size	
				enqr	J. BROWN	01-12-99		dwg no 51415	
				chr	J. BROWN	01-12-99	code 3		
				appd	J. BROWN	01-12-99	cage code 22526		
sheet index	revision sheet								

Tous droits strictement réservés. Reproduction ou communication a des tiers interdite sous quelque forme que ce soit sans autorisation écrite du propriétaire. Propriété de c FCI. Droits de reproduction FCI.



All rights strictly reserved. Reproduction or issue to third parties in any form whatever is not permitted without written authority from the proprietor. Property of FCI. Copyright FCI.

PRODUCT NUMBER
51415-00X--
 NOTE ③



SCALE 2:1

RECOMMENDED PCB LAYOUT

THIS FILE WAS ORIGINALLY CREATED IN THE PRO ENGINEER ENVIRONMENT AND ANY FUTURE REVISIONS TO THIS FILE MUST BE MADE IN THE PRO ENGINEER ENVIRONMENT

mat'l code		SEE NOTES		tolerances unless otherwise specified		CUSTOMER		ELECTRONICS www.fciconnect.com	
ltr	ecn no.	dr	date	linear	.XX±.01/.X±.3	COPY		title	
L				angles	.XXX±.005/.XX±.13	projection		IP + 24S + IP	
				dr	.XXX±.002/.XXX±.051			RIGHT ANGLE SOLDER HEADER	
				enr	0°±2°	INCH/MM		product family	
				chr		scale		PWRBLADE	
				appd		1:1		code	
sheet index		revision sheet		C. BAROT 01-12-99 J. BROWN 01-12-99 J. BROWN 01-12-99 J. BROWN 01-12-99	size		dwg no		
					A		51415		213
									sheet 4

form no. 7530-001-103

cage code **22526**

Tous droits strictement réservés. Reproduction ou communication a des tiers interdite sous quelque forme que ce soit sans autorisation écrite du propriétaire. Propriété de c FCI. Droits de reproduction FCI.



All rights strictly reserved. Reproduction or issue to third parties in any form, whenever is not permitted without written authority from the proprietor. Property of FCI. Copyright FCI.

PRODUCT NUMBER

51415-00X--
NOTE (3)

NOTES:

1. DIMENSIONS AND TOLERANCES ARE IN ACCORDANCE WITH ASME Y14.5M, 1994 UNLESS OTHERWISE SPECIFIED.

CONNECTOR NOTES:

2. HOUSING MATERIAL: UL 94 V-0 GLASS FILLED HIGH-TEMP THERMOPLASTIC
POWER CONTACT MATERIAL: COPPER ALLOY
SIGNAL PIN MATERIAL: COPPER ALLOY

3. PLATING(51415-00X STAND FOR 51415-001 , 51415-002 AND 51415-003)
51415-00X Singal Pin:30u"/0.76um Au OVER 50u"/1.27um Ni ON THE CONTACT AREA.
AND 100u"/2.54um SnPb PLATING OVER 50u"/1.27um Ni ON THE TERMINATION SECTION.
Power Pin:30u"/0.76um Au OVER 50u"/1.27um Ni ON THE CONTACT AREA,
AND 100u"/2.54um SnPb PLATING OVER 50u"/1.27um Ni ON THE TERMINATION SECTION.

51415-00XLF Singal Pin:30u"/0.76um Au OVER 50u"/1.27um Ni ON THE CONTACT AREA.
AND 78u"/2.00um Sn PLATING OVER 50u"/1.27um Ni ON THE TERMINATION SECTION.
Power Pin:30u"/0.76um Au OVER 50u"/1.27um Ni ON THE CONTACT AREA,
AND 78u"/2.00um Sn PLATING OVER 50u"/1.27um Ni ON THE TERMINATION SECTION.

PART NUMBER 51415-00XLF MEETS EUROPEAN UNION DIRECTIVE AND OTHER COUNTRY REGULATIONS AS DESCRIBED IN GS-22-008.

THE HOUSING WILL WITHSTAND EXPOSURE TO 260° PEAK TEMPERATURE FOR 10 SECONDS IN A WAVE SOLDER APPLICATION WITH A CIRCUIT BOARD.

4. MANUFACTURER'S NAME, P/N, AND DATE CODE TO APPEAR ON THIS SURFACE.
5. PRODUCT SPECIFICATION GS-12-149.
APPLICATION SPECIFICATION BUS-20-067.

PCB NOTES:

6. ALL HOLE DIAMETERS ARE FINISHED HOLE SIZE.
7. MOUNTING HOLES, WHERE APPLICABLE, ARE UNPLATED.
8. Ø.0453±0.0010 [1.151±0.025] DRILLED HOLES PLATED WITH .0003 [0.008] MIN SnPb OVER .001 [0.03] TO .003 [0.08] Cu PLATING TO ACHIEVE Ø.040±.003 [1.02±.07] HOLE.
9. "DIM XXX" TO BE DETERMINED BY THE CUSTOMER.
10. CONNECTOR KEEP-OUT ZONE.

THIS FILE WAS ORIGINALLY CREATED IN THE PRO ENGINEER ENVIRONMENT AND ANY FUTURE REVISIONS TO THIS FILE MUST BE MADE IN THE PRO ENGINEER ENVIRONMENT

mat'l code				SEE NOTES		tolerances unless otherwise specified		CUSTOMER		ELECTRONICS www.fciconnect.com	
ltr	ecn no.	dr	date	line dr	.XX±.01/.X±.3		COPY		title		
L					.XXX±.005/.XX±.13		projection		IP + 24S + IP		
					.XXX±.002/.XXX±.051				RIGHT ANGLE SOLDER HEADER		
				angles	0°±2°		INCH/MM		product family		code
				dr	C. BAROT	01-12-99	scale		PWRBLADE		213
				eng	J. BROWN	01-12-99	1:1		size		sheet
				chr	J. BROWN	01-12-99			51415		5
				app	J. BROWN	01-12-99			A		
sheet index	revision sheet										